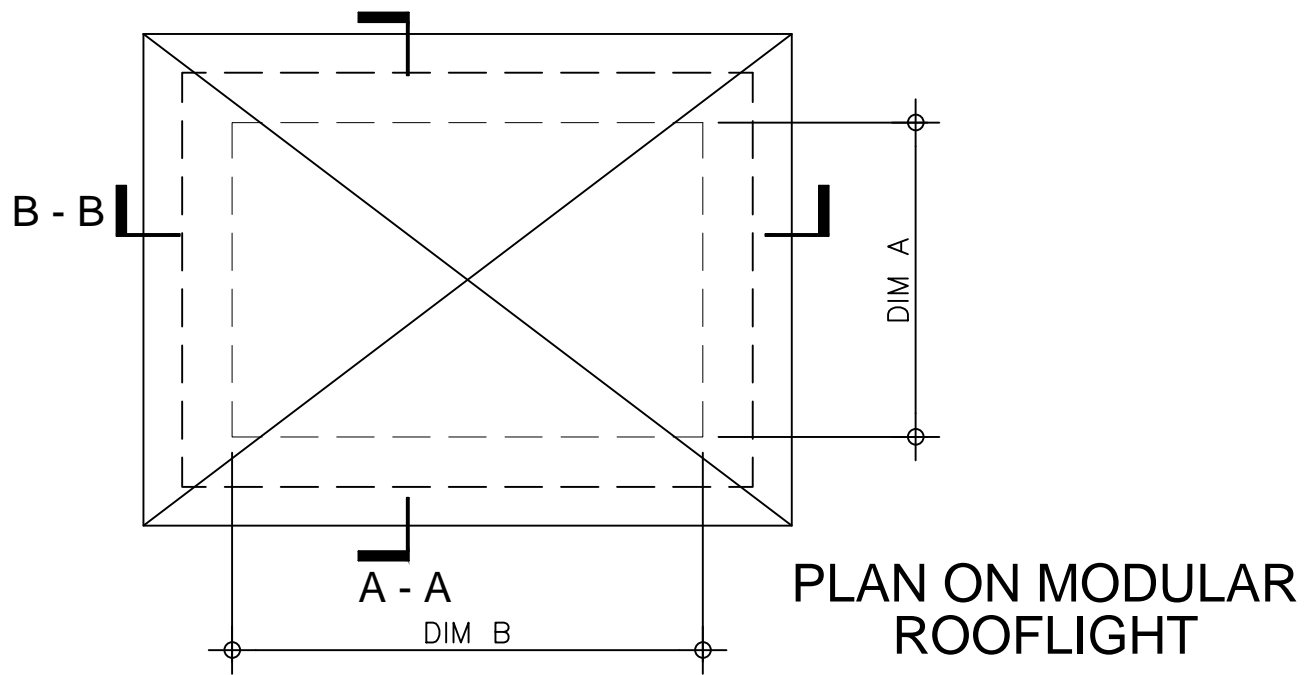


Kerb Specification:
 X2 kerb constructed from self
 finish white uPVC

Typical Glazing Specification:
 2mm thick polyester powder coated aluminium
 with 16mm structured polycarbonate internal liner

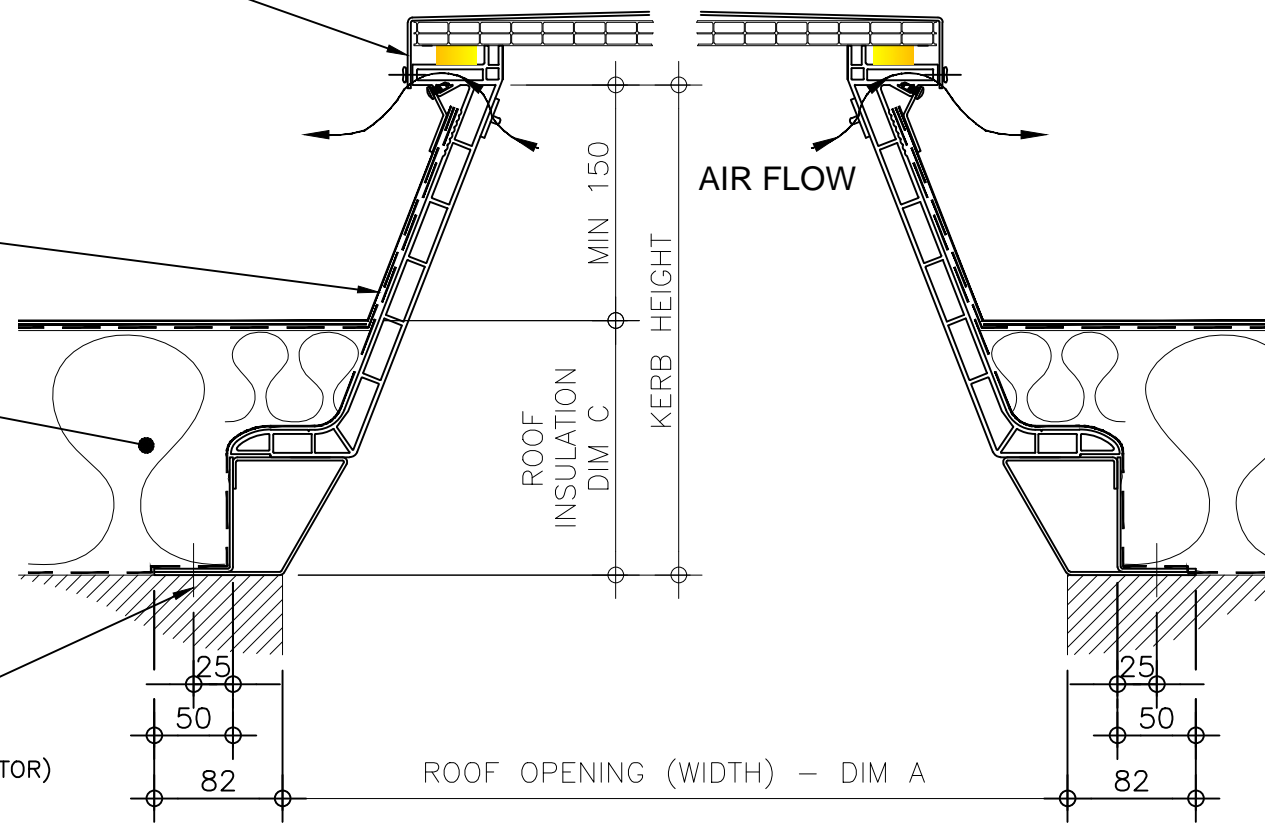


INSULATED ALUMINIUM LID POP
 RIVETED TO X2 KERB

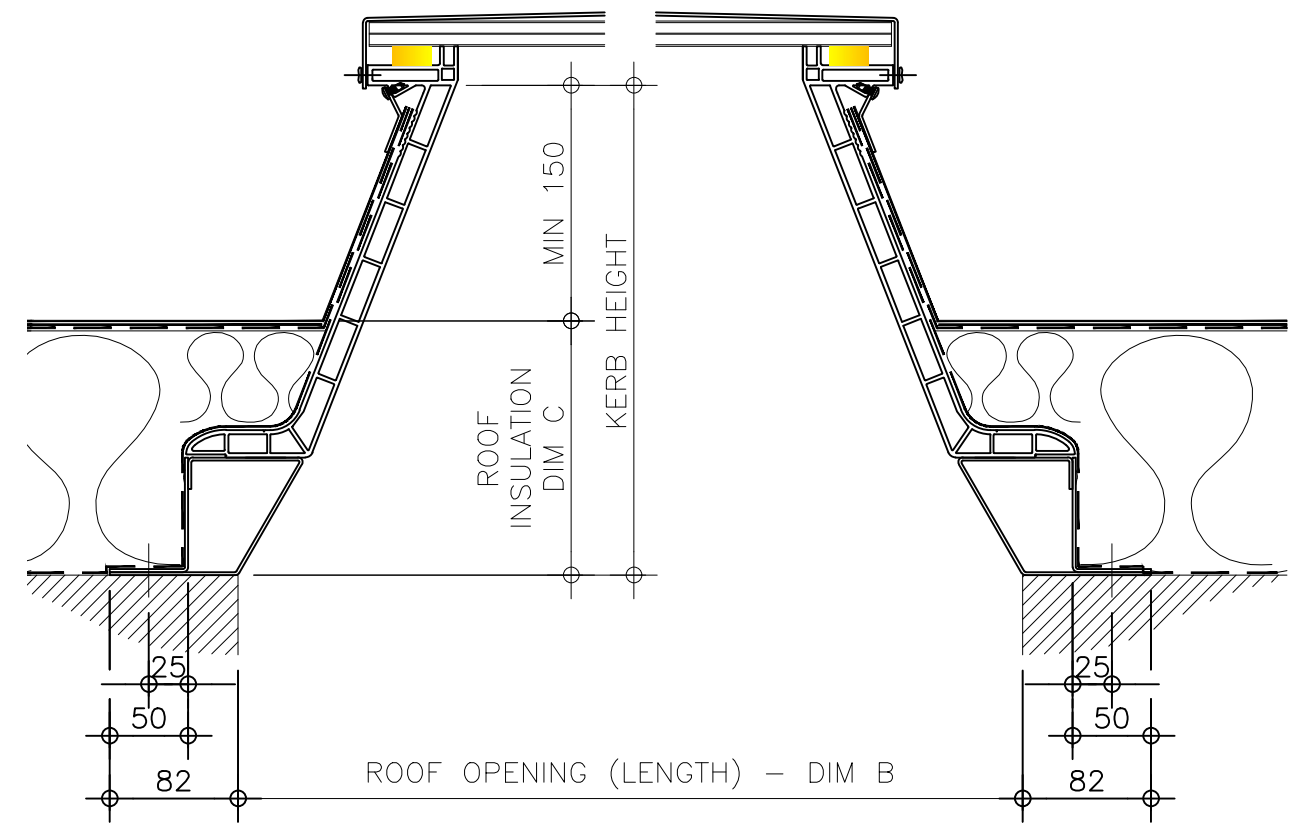
ROOF FINISHES DRESSED
 UP EXTERNAL FACE OF
 X2 KERB BY OTHERS

ROOF INSULATION
 BY OTHERS

FIXING POINT (FIXINGS
 DEPENDANT OF UPSTAND
 SUBSTRATE, TO BE
 DETERMINED BY CONTRACTOR)




AIR FLOW



SECTION A - A

SECTION B - B

REV:	DATE:	DESCRIPTION:	DRN BY:	DESCRIPTION:				
0	29.04.13	New modular drawings released	IW	Hit & miss ventilated uPVC upstand with flexible base kerb, fixed direct to roof with insulated solid lid (aluminium).				
				DRAWN BY:	CREATION DATE:	CHECKED BY:	SCALE(S)	
				IW	23-Dec-13	DL	1:5 @ A3	0
<i>Xtralite (Rooflights) Limited</i> Spencer Road, Blyth Industrial Estate, Blyth, Northumberland, NE24 5TG T:01670 354 157 F:01670 364 875 E:sales@xtralite.co.uk W:www.xtralite.co.uk								DRG No. XT-X1-A-01-ISL