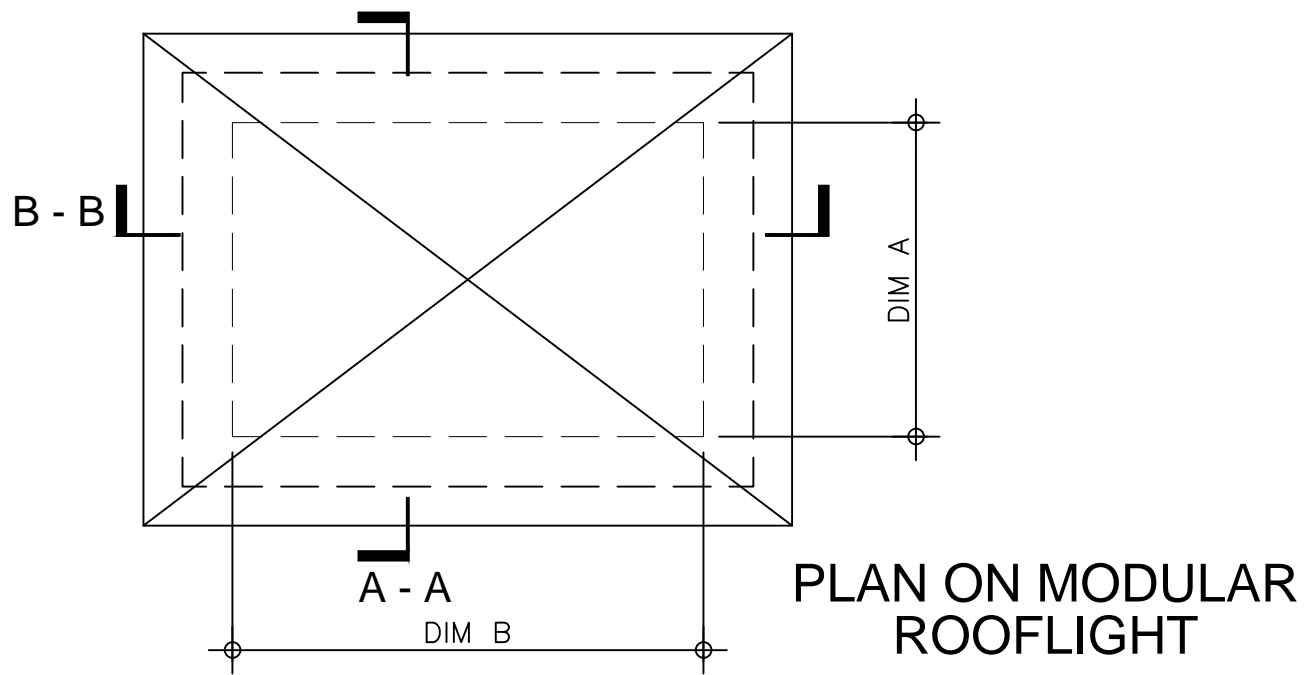


Kerb Specification:
 X2 kerb constructed from self
 finish white uPVC

Typical Glazing Specification:
 2mm thick polyester powder coated aluminium
 with 16mm structured polycarbonate internal liner

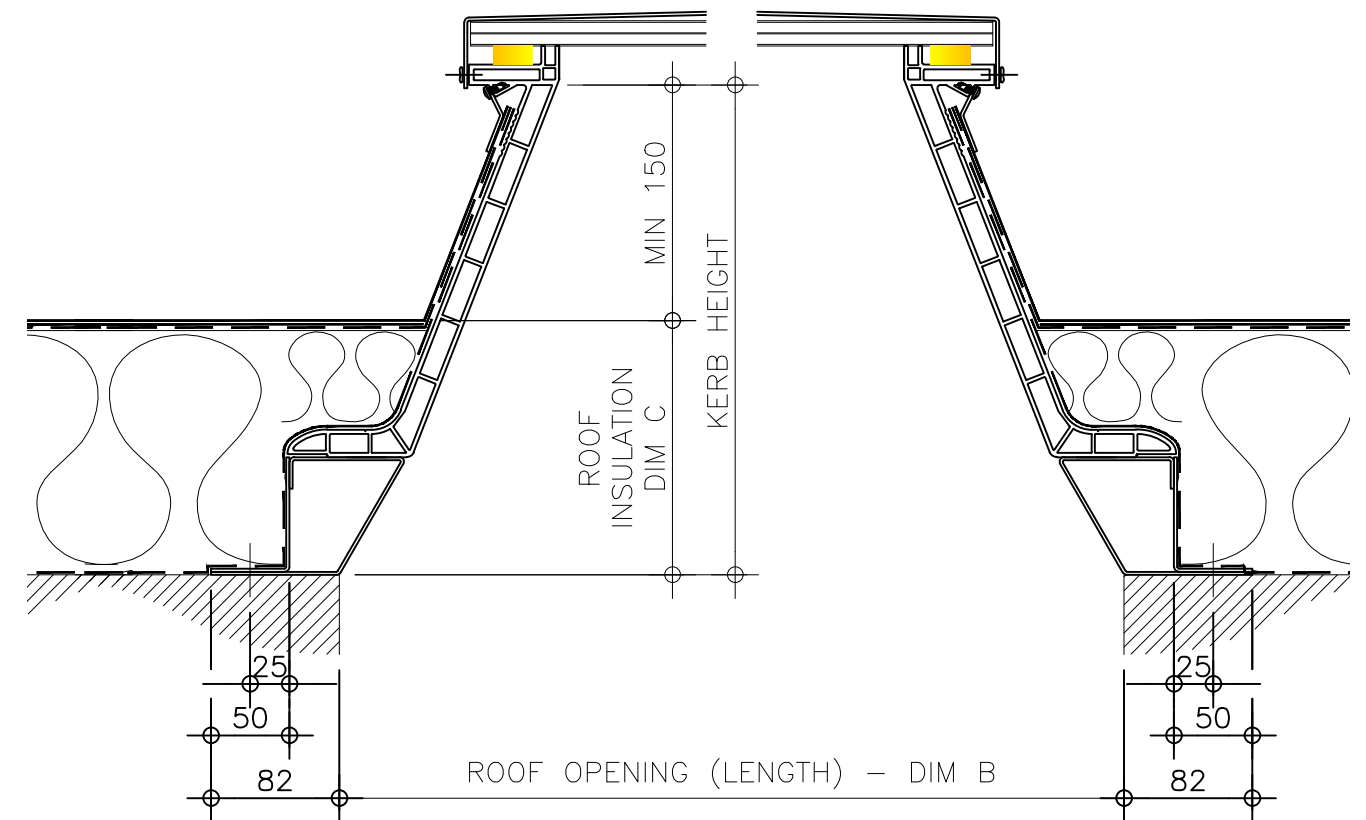
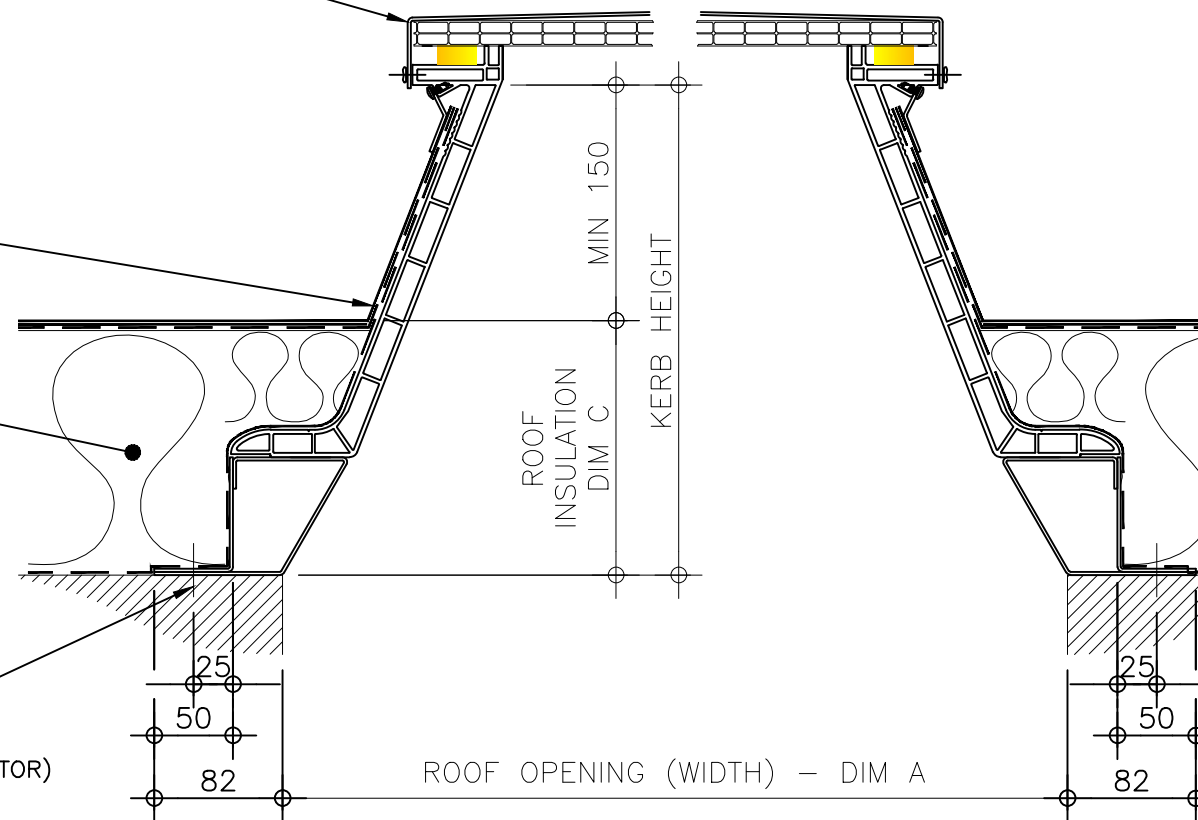


INSULATED ALUMINIUM LID
 POP RIVETED TO X2 KERB

ROOF FINISHES DRESSED
 UP EXTERNAL FACE OF
 X2 KERB BY OTHERS

ROOF INSULATION
 BY OTHERS

FIXING POINT (FIXINGS
 DEPENDANT OF UPSTAND
 SUBSTRATE, TO BE
 DETERMINED BY CONTRACTOR)



REV: 0	DATE: 29.04.13	DESCRIPTION: New modular drawings released	DRN BY IW	DESCRIPTION: Unventilated uPVC upstand with flexible base kerb, fixed direct to roof with insulated solid lid (aluminium).					 DRG No. XT-X1-A-00-ISL
				DRAWN BY: IW	CREATION DATE: 23-Dec-13	CHECKED BY: DL	SCALE(S) 1:5 @ A3	REVISION: 0	
				<i>Xtralite (Rooflights) Limited</i> Spencer Road, Blyth Industrial Estate, Blyth, Northumberland, NE24 5TG T:01670 354 157 F:01670 364 875 E:sales@xtralite.co.uk W:www.xtralite.co.uk					