

PLAN ON MODULAR ROOFLIGHT

Kerb Specification:
 X2V kerb constructed from self finish white uPVC

Typical Glazing Specification:
 Outer - 3mm thick clear UV protected polycarbonate
 Mid - 2mm thick clear polycarbonate
 Inner - 3mm thick clear polycarbonate

STANDARD SECURITY SCREWS COMPLETE WITH COVER CAP

ALWAYS HINGED ON LONG SIDE

FIXING POINT (FIXINGS DEPENDANT OF UPSTAND SUBSTRATE, TO BE DETERMINED BY CONTRACTOR)

ROOF FINISHES BY OTHERS

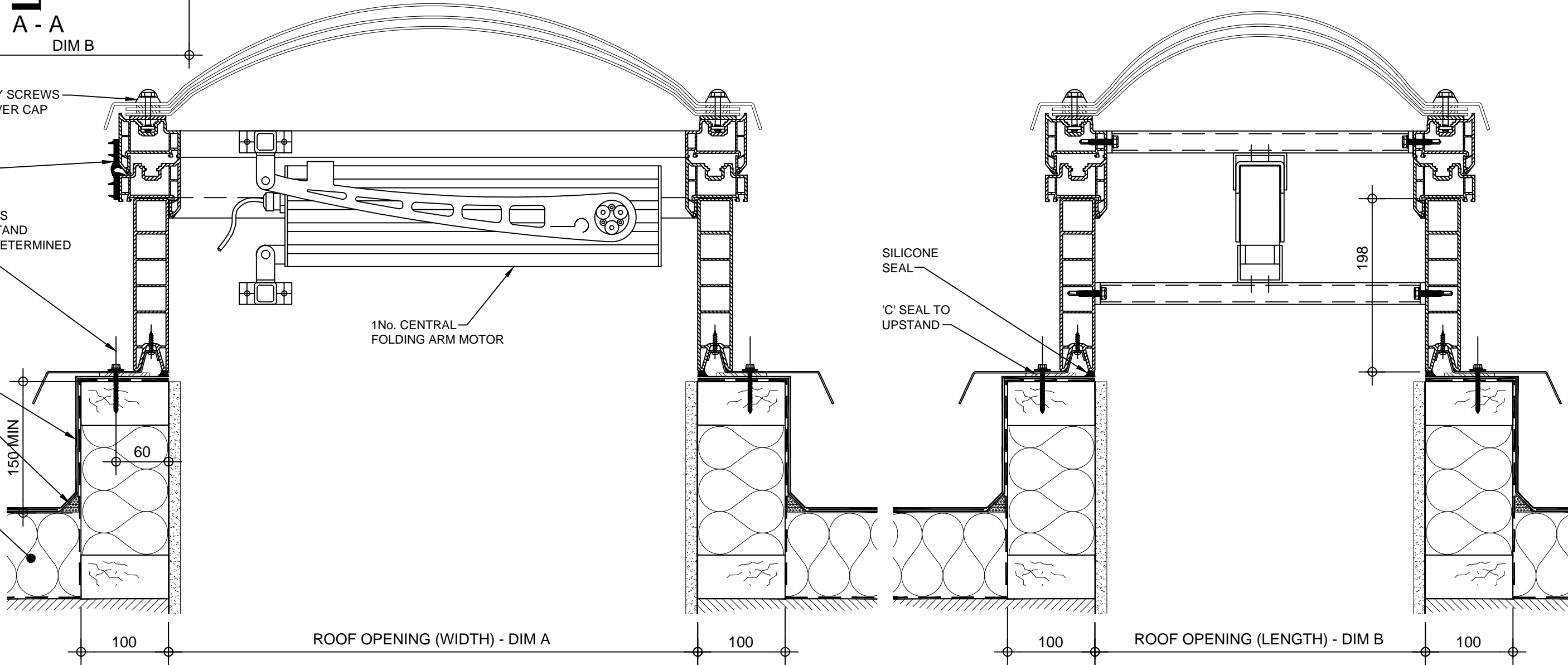
FILLET BY OTHERS

ROOF INSULATION BY OTHERS

150 MIN

60

100



1No. CENTRAL FOLDING ARM MOTOR

SILICONE SEAL

'C' SEAL TO UPSTAND

ROOF OPENING (WIDTH) - DIM A

ROOF OPENING (LENGTH) - DIM B

SECTION A - A

SECTION B - B

REV:	DATE:	DESCRIPTION:	DRN BY	DESCRIPTION:
1	13.12.13	Upstand details revised	IW	200mm high uPVC X2V adaptor kerb upstand with 140° electrically operated automatic opening vent, Triple skin polycarbonate dome and standard security fixings. Vent actuated via 1No centrally located folding arm motor.
0	20.09.12	New modular drawings released	IW	
				DRAWN BY: IW
				CREATION DATE: 13-Dec-13
				CHECKED BY:
				SCALE(S): 1:5 @ A3
				REVISION: 1
<p>Xtralite (Rooflights) Limited Spencer Road, Blyth Industrial Estate, Blyth, Northumberland, NE24 5TG T:01670 354 157 F:01670 364 875 E:sales@xtralite.co.uk W:www.xtralite.co.uk</p>				



DRG No.
 XT-X2V-D-05-140-FA1-SS