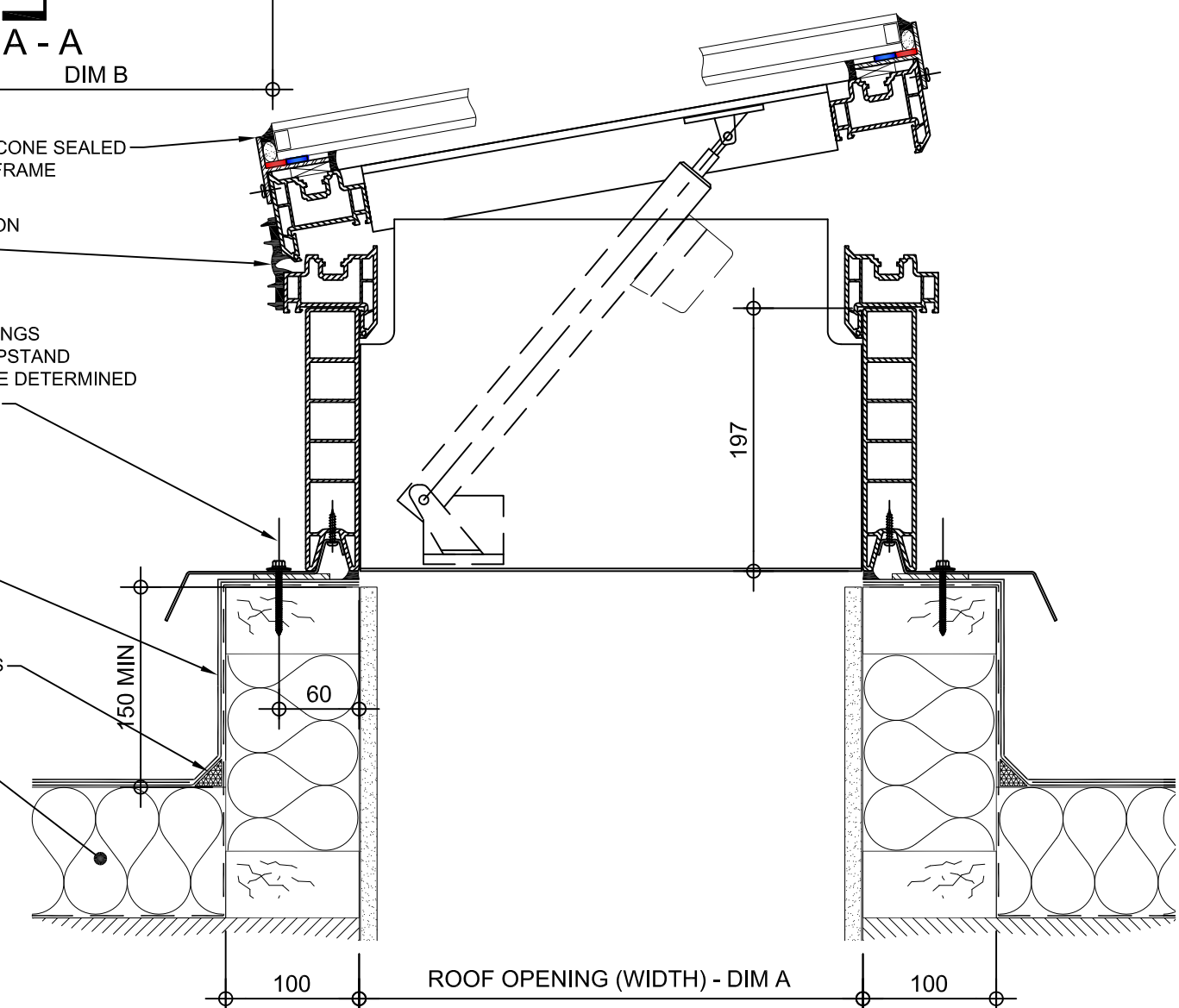


PLAN ON MODULAR ROOFLIGHT

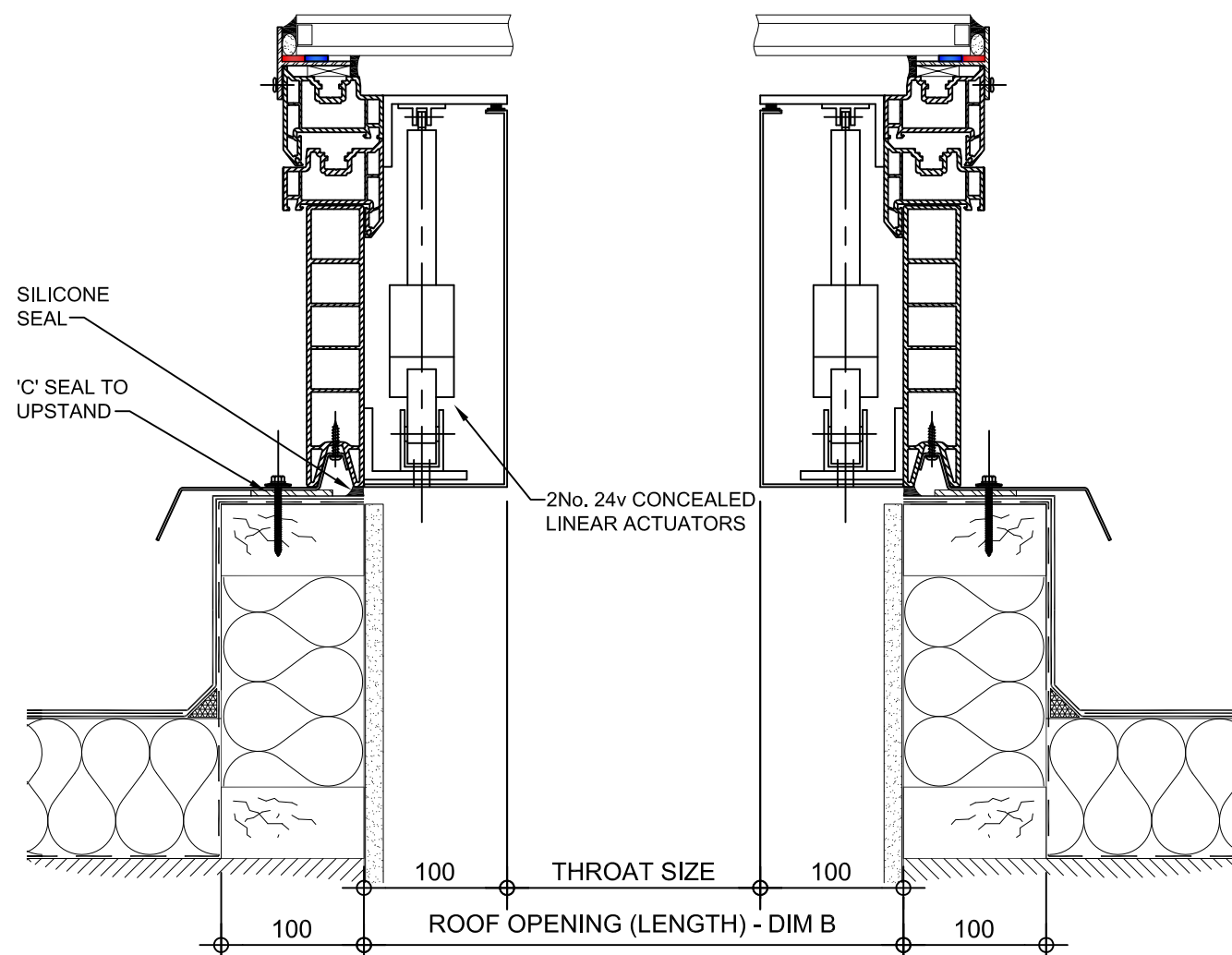
**Kerb Specification:**  
 X2V kerb constructed from self finish white uPVC

**Typical Glazing Specification:**  
 Outer - 6mm thick clear toughened glass  
 Core - 16mm thick air filled cavity  
 Inner - 6.4mm thick clear laminated low 'E' glass

GLASS FULLY SILICONE SEALED INTO 'T' SECTION FRAME  
 ALWAYS HINGED ON LONG SIDE  
 FIXING POINT (FIXINGS DEPENDANT OF UPSTAND SUBSTRATE, TO BE DETERMINED BY CONTRACTOR)  
 ROOF FINISHES BY OTHERS  
 FILLET BY OTHERS  
 ROOF INSULATION BY OTHERS



SECTION A - A



SECTION B - B

REV:	DATE:	DESCRIPTION:	DRN BY	DESCRIPTION:
1	13.12.13	Upstand details revised	IW	200mm high uPVC X2V adaptor kerb upstand with 90° electrically operated automatic opening vent and double glazed flat glass top. Vent actuated via 2No. concealed S1 linear motors
0	20.09.12	New modular drawings released	IW	
				DRAWN BY: IW
				CREATION DATE: 13-Dec-13
				CHECKED BY:
				SCALE(S): 1:5 @ A3
				REVISION: 1
				<b>Xtralite (Rooflights) Limited</b>
				Spencer Road, Blyth Industrial Estate, Blyth, Northumberland, NE24 5TG
				T:01670 354 157 F:01670 364 875 E:sales@xtrallite.co.uk W:www.xtrallite.co.uk

**Xtralite**  
ROOFLIGHTS

DRG No.  
XT-X2V-D-05-90-IGLF