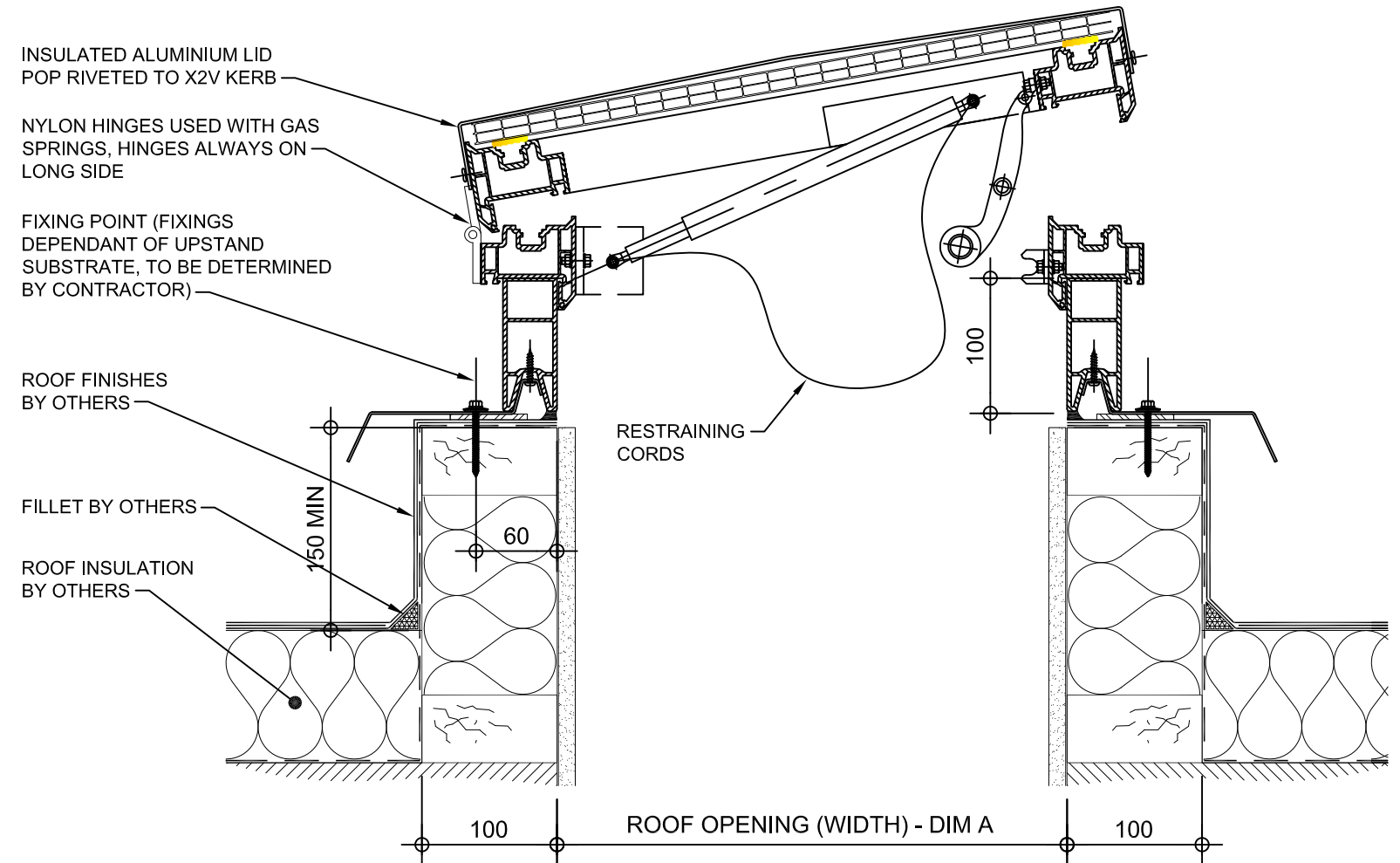


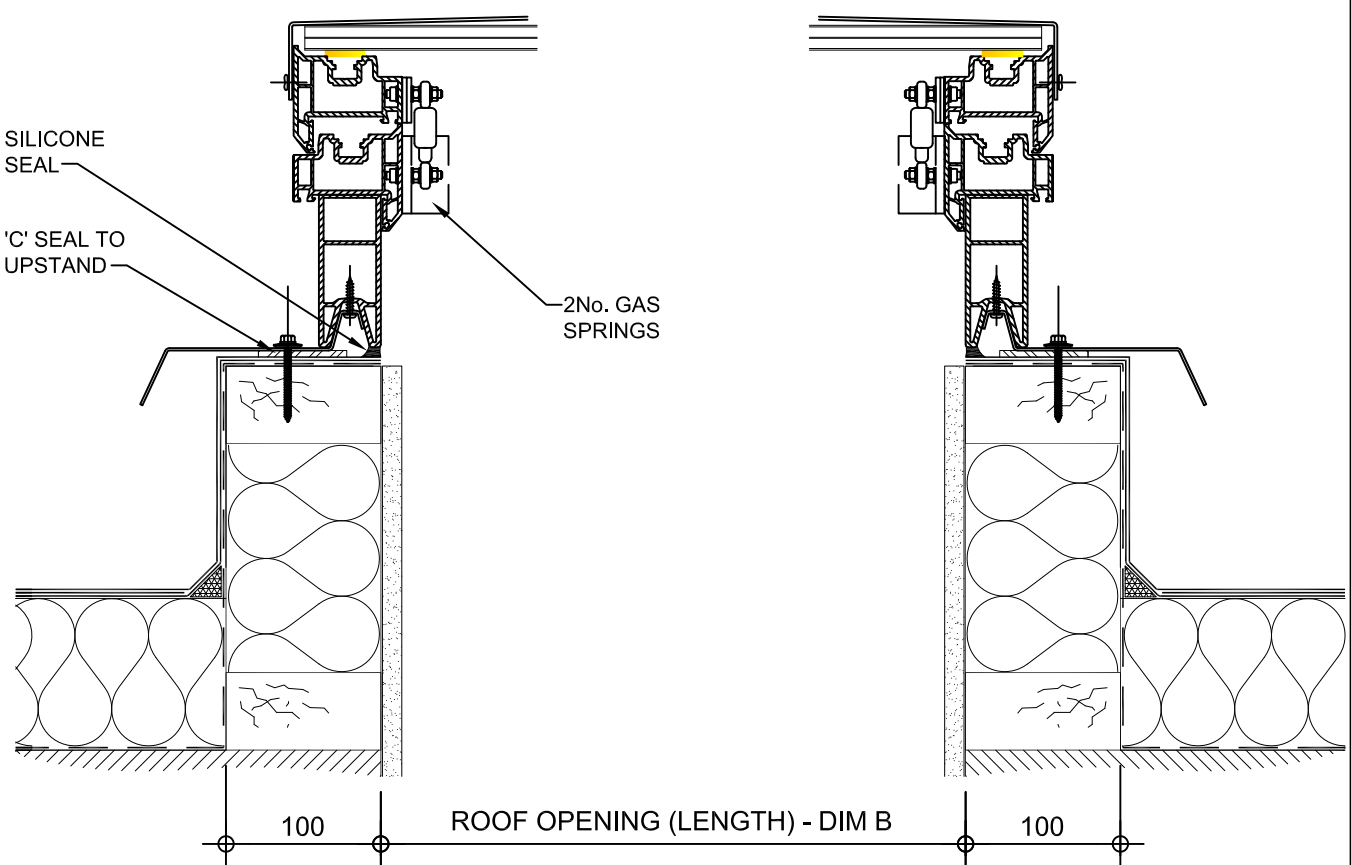
**PLAN ON MODULAR ROOFLIGHT**

**Kerb Specification:**  
X2V kerb constructed from self finish white uPVC

**Typical Glazing Specification:**  
2mm thick polyester powder coated aluminium with 16mm structured polycarbonate internal liner



**SECTION A - A**



**SECTION B - B**

- INSULATED ALUMINIUM LID POP RIVETED TO X2V KERB
- NYLON HINGES USED WITH GAS SPRINGS, HINGES ALWAYS ON LONG SIDE
- FIXING POINT (FIXINGS DEPENDANT OF UPSTAND SUBSTRATE, TO BE DETERMINED BY CONTRACTOR)
- ROOF FINISHES BY OTHERS
- FILLET BY OTHERS
- ROOF INSULATION BY OTHERS

RESTRAINING CORDS

- SILICONE SEAL
- 'C' SEAL TO UPSTAND
- 2No. GAS SPRINGS

REV:	DATE:	DESCRIPTION:	DRN BY	DESCRIPTION:
1	13.12.13	Upstand details revised	IW	100mm high uPVC X2V adaptor kerb upstand. Access hatch with gas spring opening and insulated solid lid.
0	20.09.12	New modular drawings released	IW	
				DRAWN BY: IW
				CREATION DATE: 19-Dec-13
				CHECKED BY:
				SCALE(S): 1:5 @ A3
				REVISION: 1
				<b>Xtralite (Rooflights) Limited</b>
				Spencer Road, Blyth Industrial Estate, Blyth, Northumberland, NE24 5TG
				T:01670 354 157 F:01670 364 875 E:sales@xtralite.co.uk W:www.xtralite.co.uk

**Xtralite ROOFLIGHTS**

DRG No.  
**XT-X2V-D-04G-ISL**