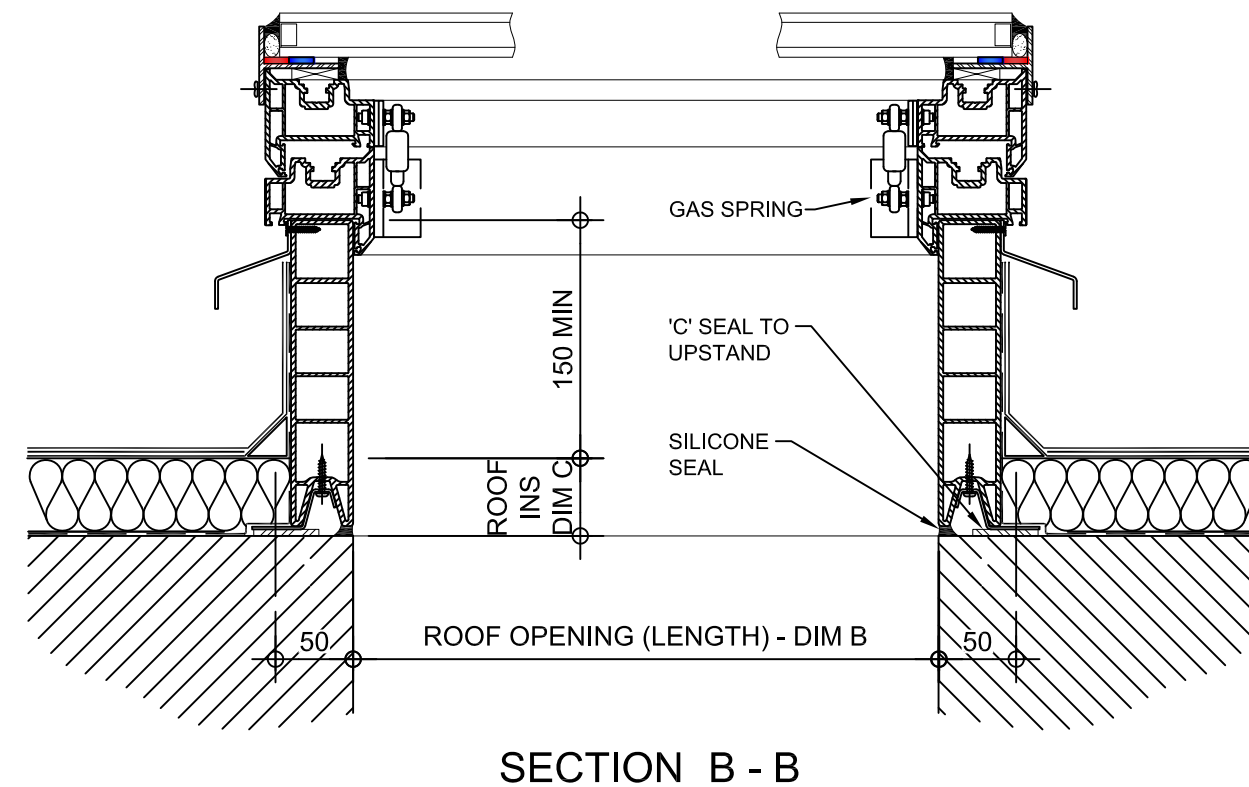
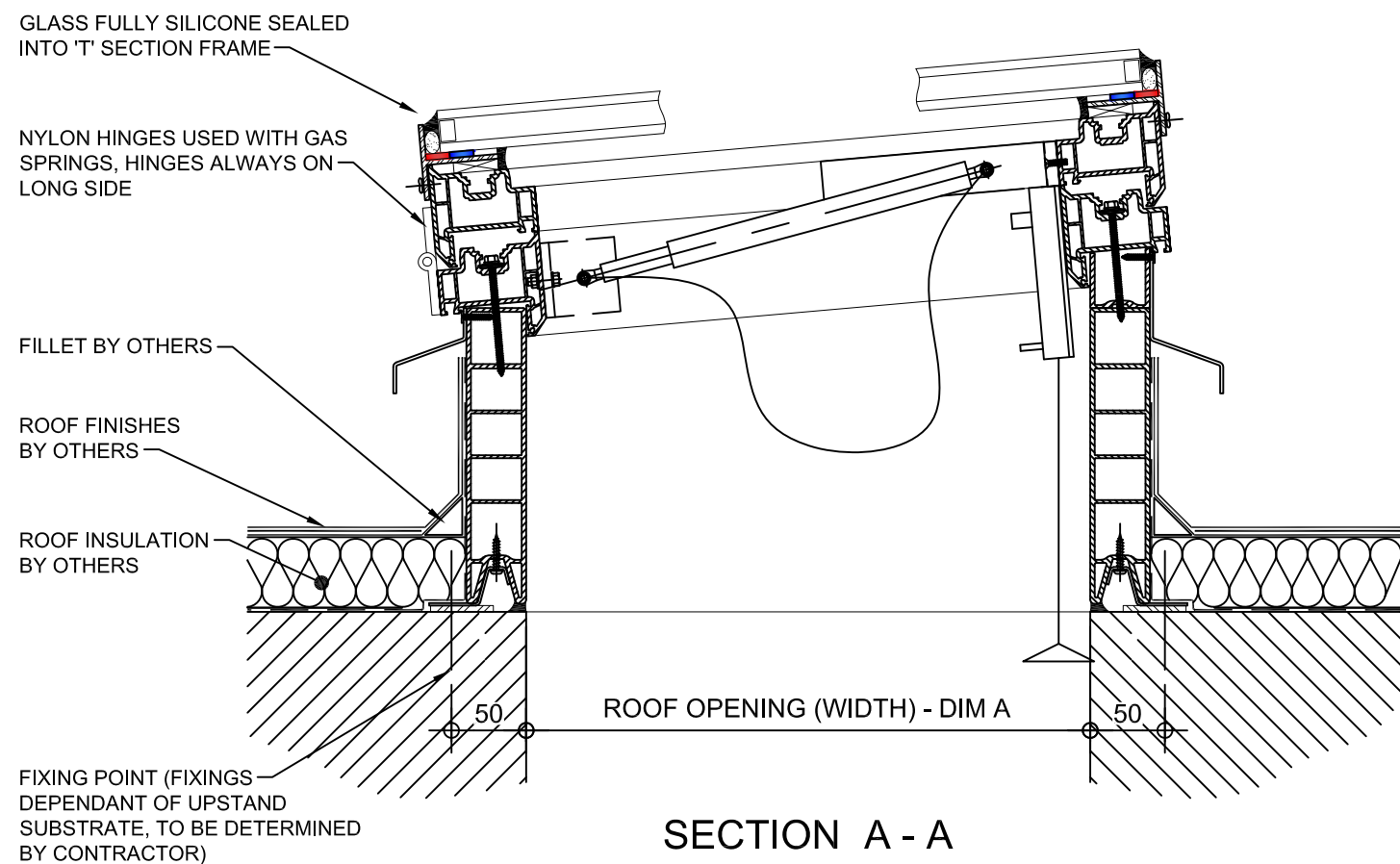


**Kerb Specification:**  
 X2V kerb constructed from self finish white uPVC

**Typical Glazing Specification:**  
 Outer - 6mm thick clear toughened glass  
 Core - 16mm thick air filled cavity  
 Inner - 6.4mm thick clear laminated low 'E' glass



REV:	DATE:	DESCRIPTION:	DRN BY	DESCRIPTION:
0	16.12.13	New modular drawings released	IW	uPVC X2V kerb direct to roof with gas sprung emergency opening vent & double glazed pitched glass top.
DRAWN BY:		CREATION DATE:	CHECKED BY:	SCALE(S)
IW		16-Dec-13	DL	1:5 @ A3
REVISION:				0
<b>Xtralite (Rooflights) Limited</b> Spencer Road, Blyth Industrial Estate, Blyth, Northumberland, NE24 5TG T:01670 354 157 F:01670 364 875 E:sales@xtralite.co.uk W:www.xtralite.co.uk				DRG No. <b>XT-X2V-C-07-IGLP</b>

