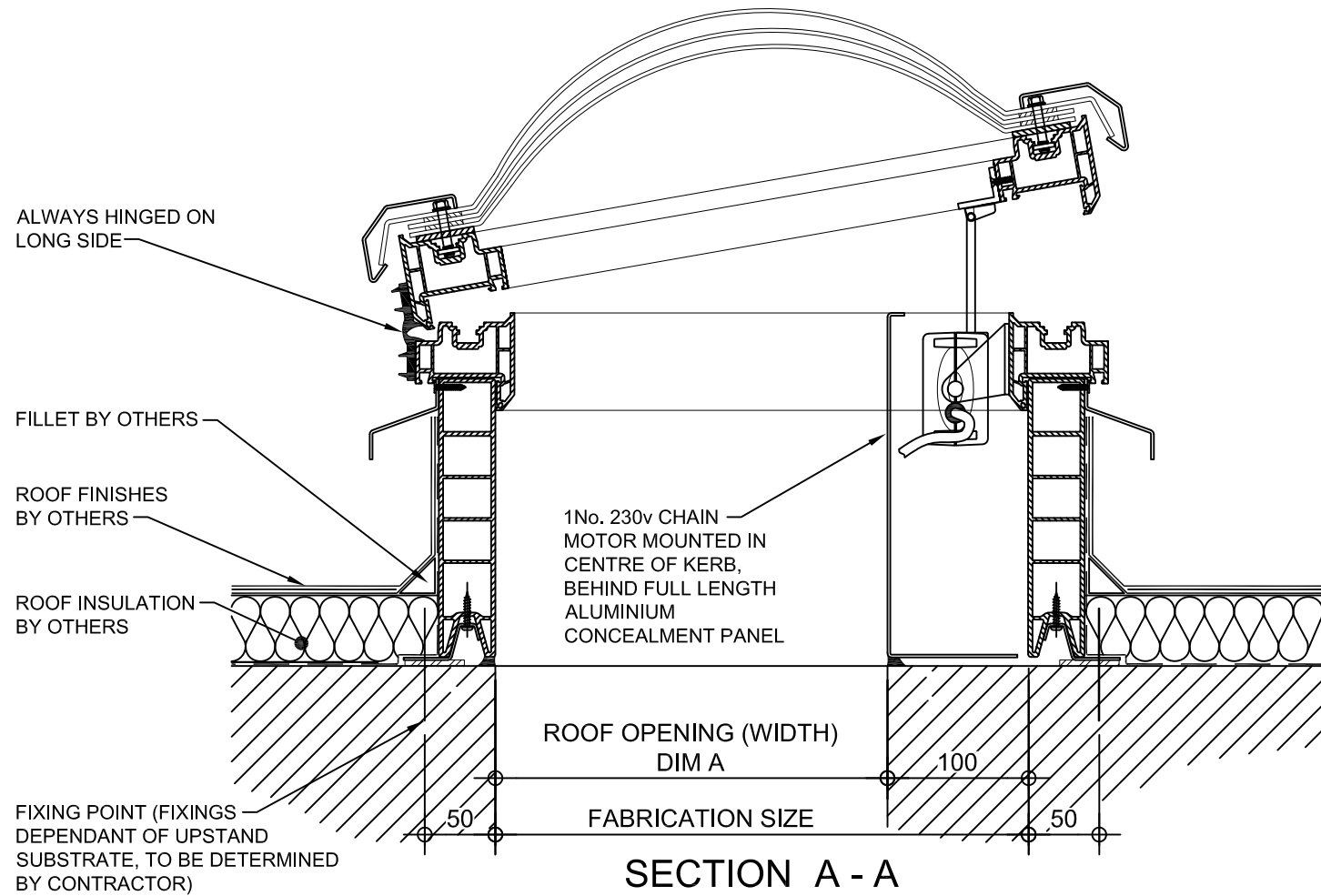


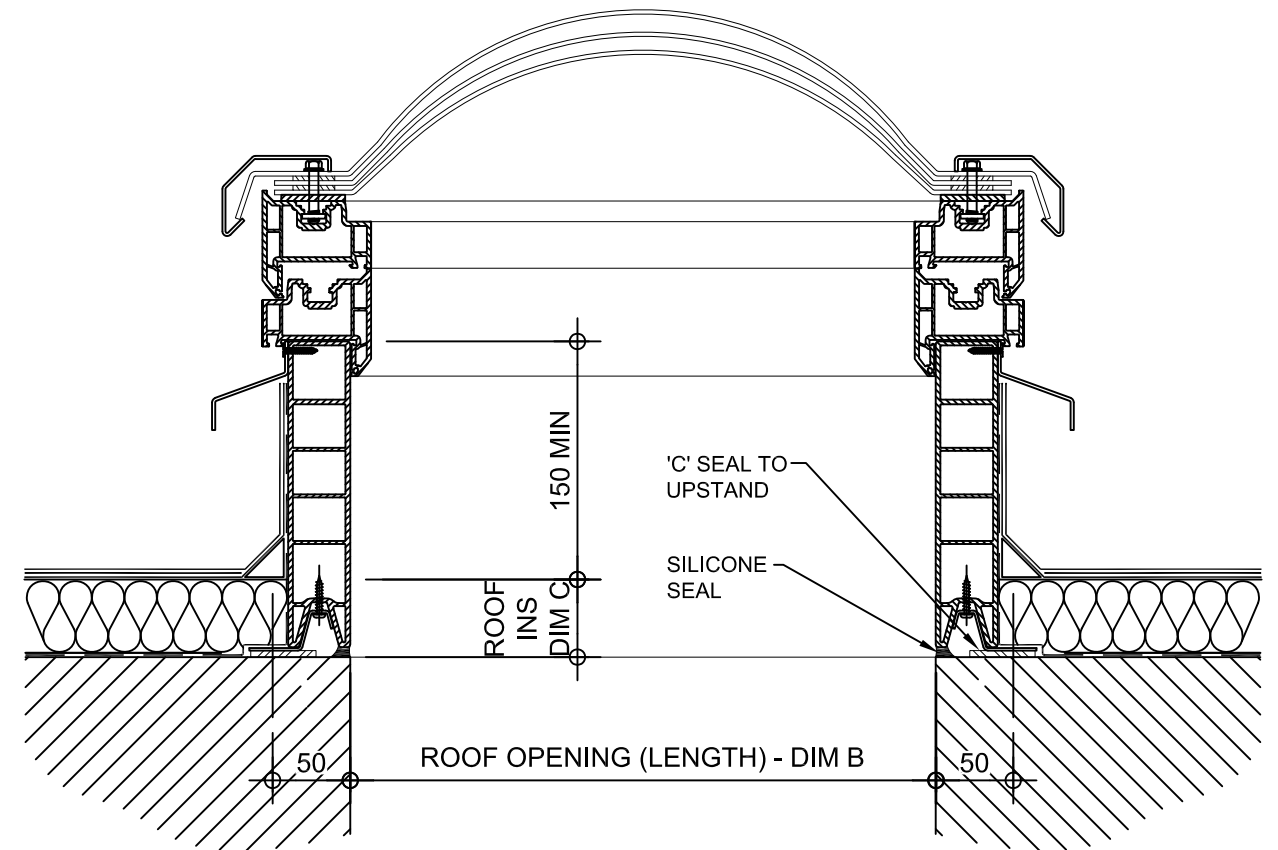
PLAN ON MODULAR ROOFLIGHT

Kerb Specification:
 X2V kerb constructed from self finish white uPVC

Typical Glazing Specification:
 Outer - 3mm thick clear UV protected polycarbonate
 Mid - 2mm thick clear polycarbonate
 Inner - 3mm thick clear polycarbonate



SECTION A - A



SECTION B - B

REV:	DATE:	DESCRIPTION:	DRN BY	DESCRIPTION:
0	16.12.13	New modular drawings released	IW	uPVC X2V kerb direct to roof with electrically operated opening vent, Triple skin polycarbonate dome and security frame. Vent actuated via 1No 230v concealed chain motor.
DRAWN BY:		CREATION DATE:	CHECKED BY:	SCALE(S)
IW		4-Mar-14	DL	1:5 @ A3
REVISION:				0
Xtralite (Rooflights) Limited Spencer Road, Blyth Industrial Estate, Blyth, Northumberland, NE24 5TG T:01670 354 157 F:01670 364 875 E:sales@xtralite.co.uk W:www.xtralite.co.uk				DRG No. XT-X2V-C-06-CM-SF

