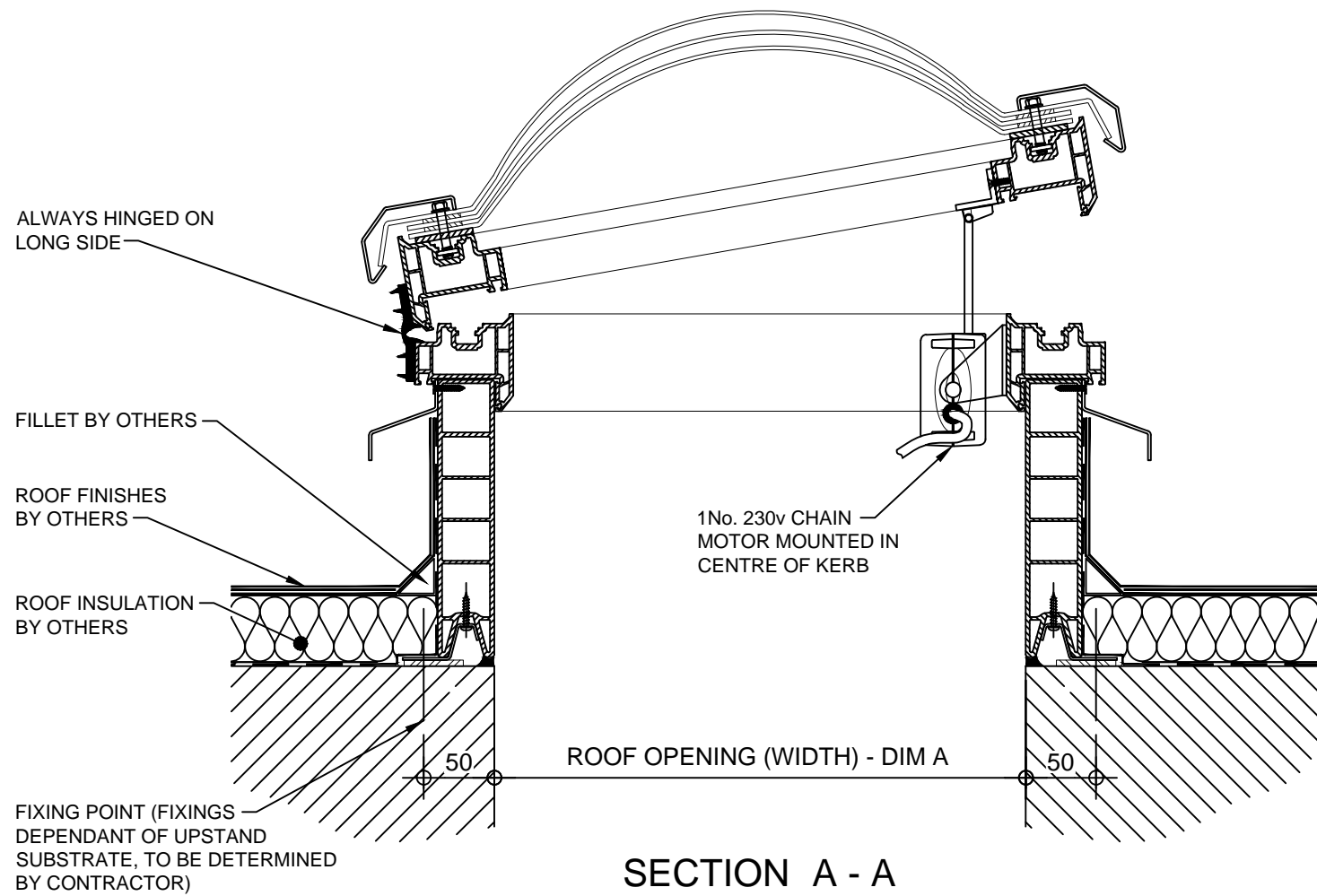


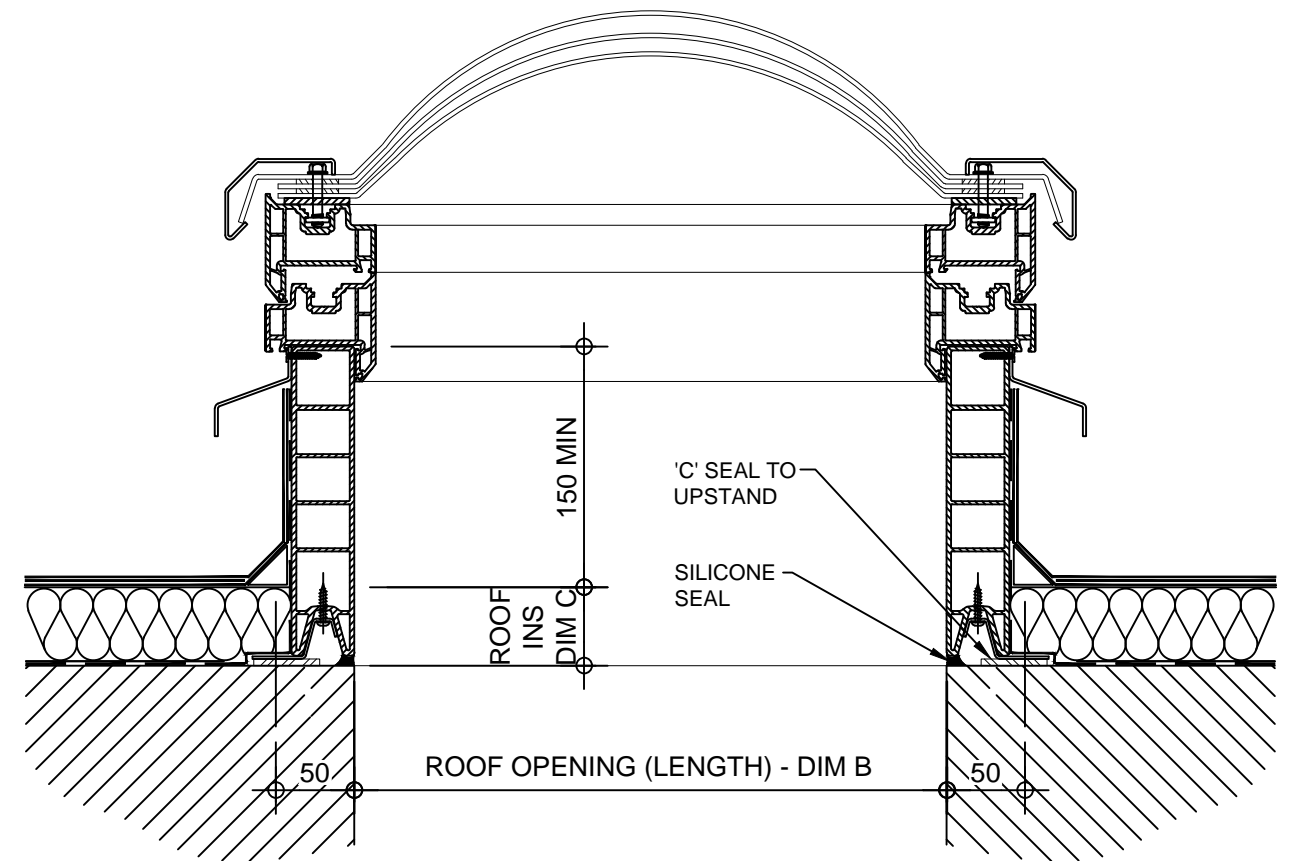
PLAN ON MODULAR ROOFLIGHT

Kerb Specification:
X2V kerb constructed from self finish white uPVC


Typical Glazing Specification:
Outer - 3mm thick clear UV protected polycarbonate
Mid - 2mm thick clear polycarbonate
Inner - 3mm thick clear polycarbonate



SECTION A - A



SECTION B - B

REV:	DATE:	DESCRIPTION:	DRN BY	DESCRIPTION:				
0	16.12.13	New modular drawings released	IW	uPVC X2V kerb direct to roof with electrically operated opening vent, Triple skin polycarbonate dome and security frame. Vent actuated via 1No 230v chain motor.				
		DRAWN BY:	CREATION DATE:	CHECKED BY:	SCALE(S)	REVISION:		
		IW	16-Dec-13	DL	1:5 @ A3	0		
Xtralite (Rooflights) Limited Spencer Road, Blyth Industrial Estate, Blyth, Northumberland, NE24 5TG T:01670 354 157 F:01670 364 875 E:sales@xtralite.co.uk W:www.xtralite.co.uk					 Xtralite ROOFLIGHTS			
					DRG No. XT-X2V-C-06-SF			