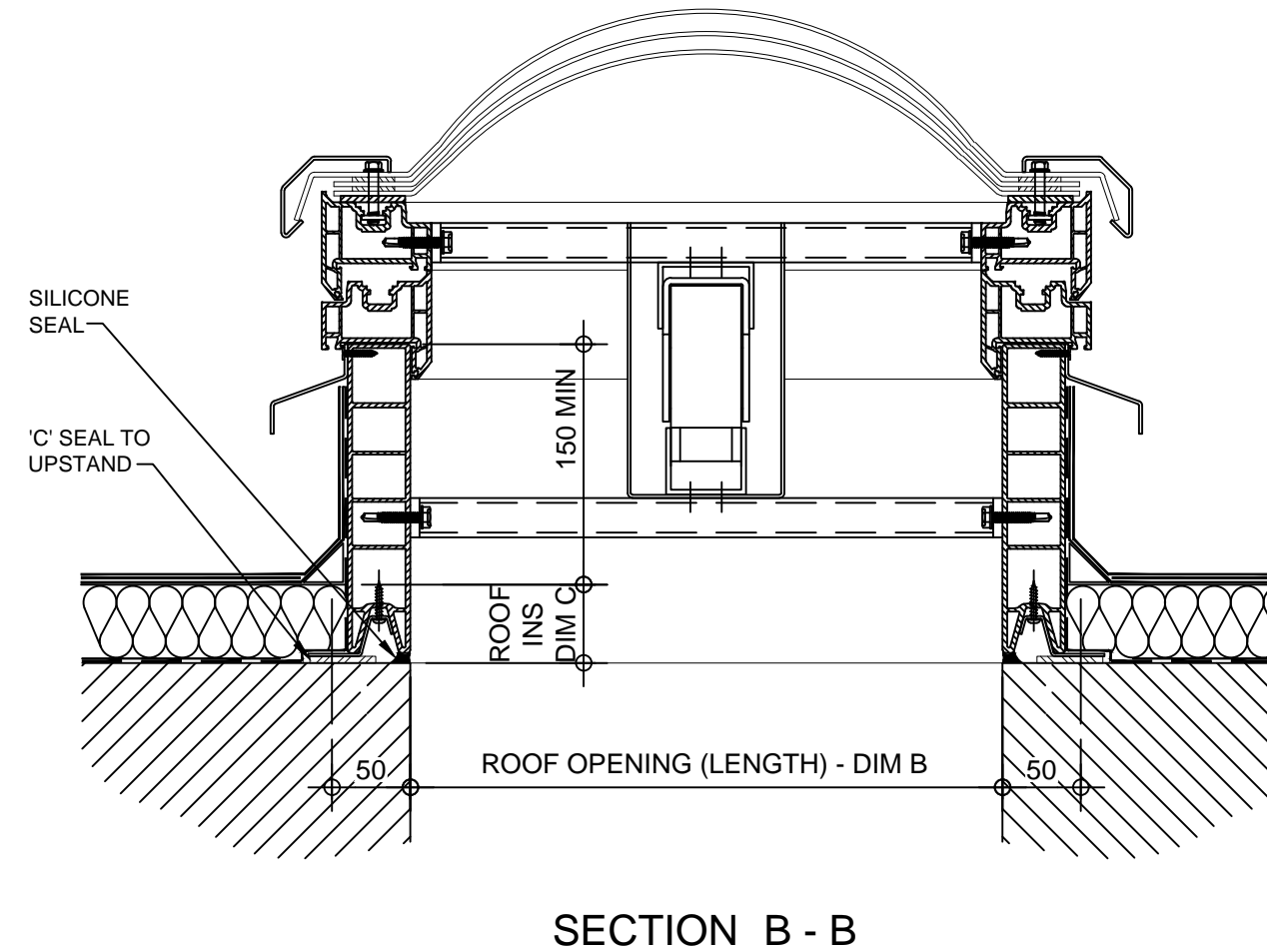
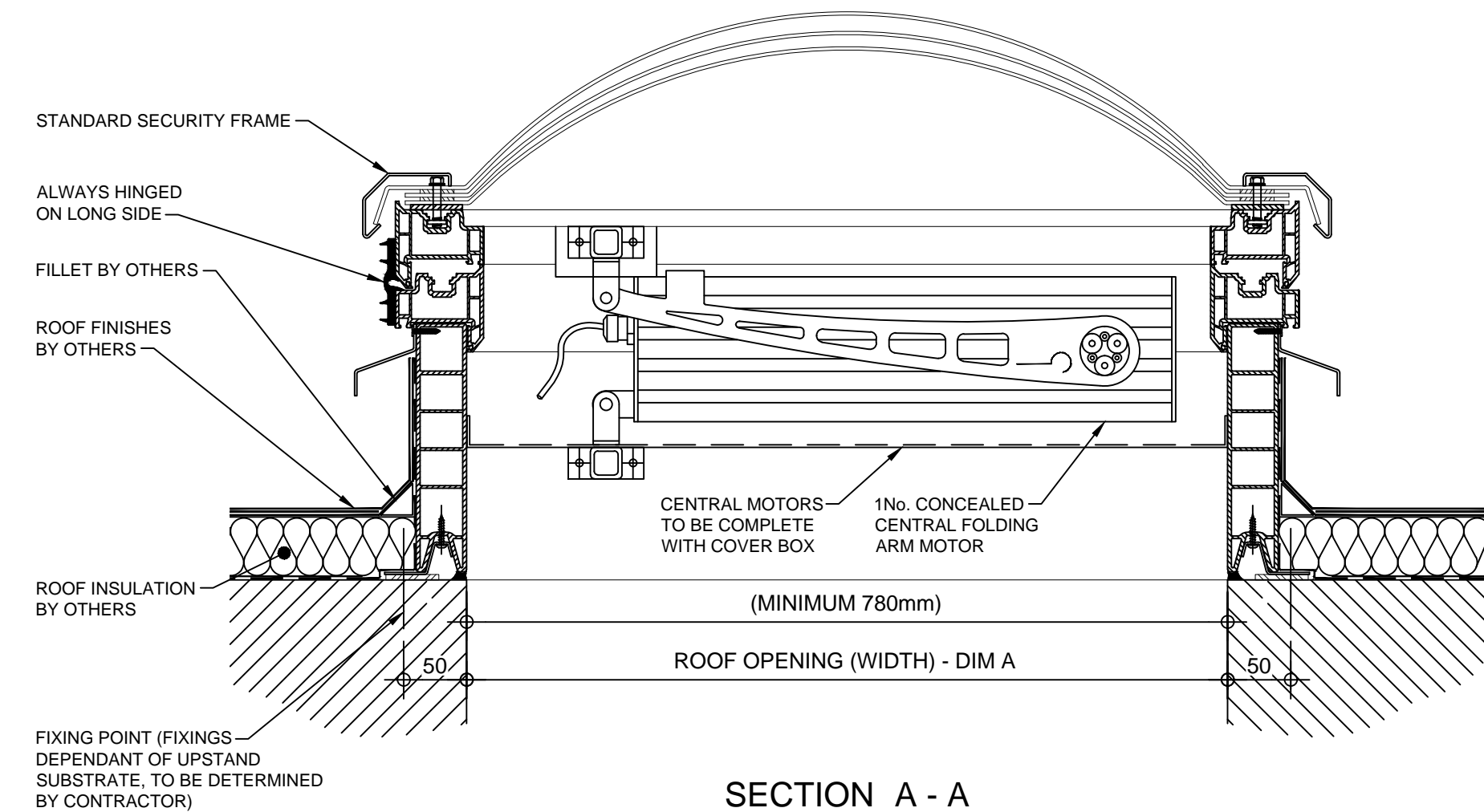



Kerb Specification:
 X2V kerb constructed from self finish white uPVC

Typical Glazing Specification:
 Outer - 3mm thick clear UV protected polycarbonate
 Mid - 2mm thick clear polycarbonate
 Inner - 3mm thick clear polycarbonate



REV:	DATE:	DESCRIPTION:	DRN BY	DESCRIPTION:						
1	16.12.13	Updated to show single stack	IW	uPVC X2V kerb direct to roof with 140° electrically operated automatic opening vent. Triple skin polycarbonate dome and security frame, Vent actuated via 1No concealed centrally located folding arm motor.	DRAWN BY: IW	CREATION DATE: 16-Dec-13	CHECKED BY: DL	SCALE(S) 1:5 @ A3	REVISION: 0	
0	06.12.12	New modular drawings released	IW							
				Xtralite (Rooflights) Limited Spencer Road, Blyth Industrial Estate, Blyth, Northumberland, NE24 5TG T:01670 354 157 F:01670 364 875 E:sales@xtralite.co.uk W:www.xtralite.co.uk					DRG No. XT-X2V-C-05-140-FA1-CM-SF	