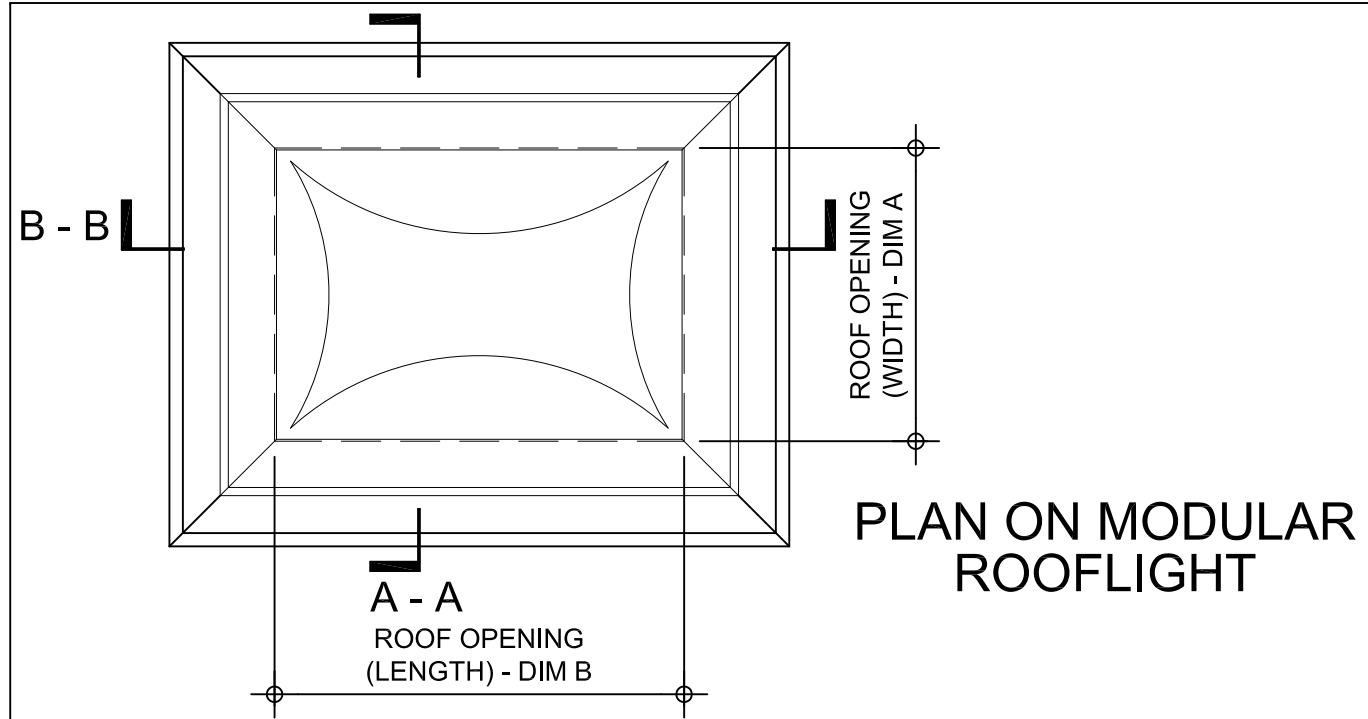
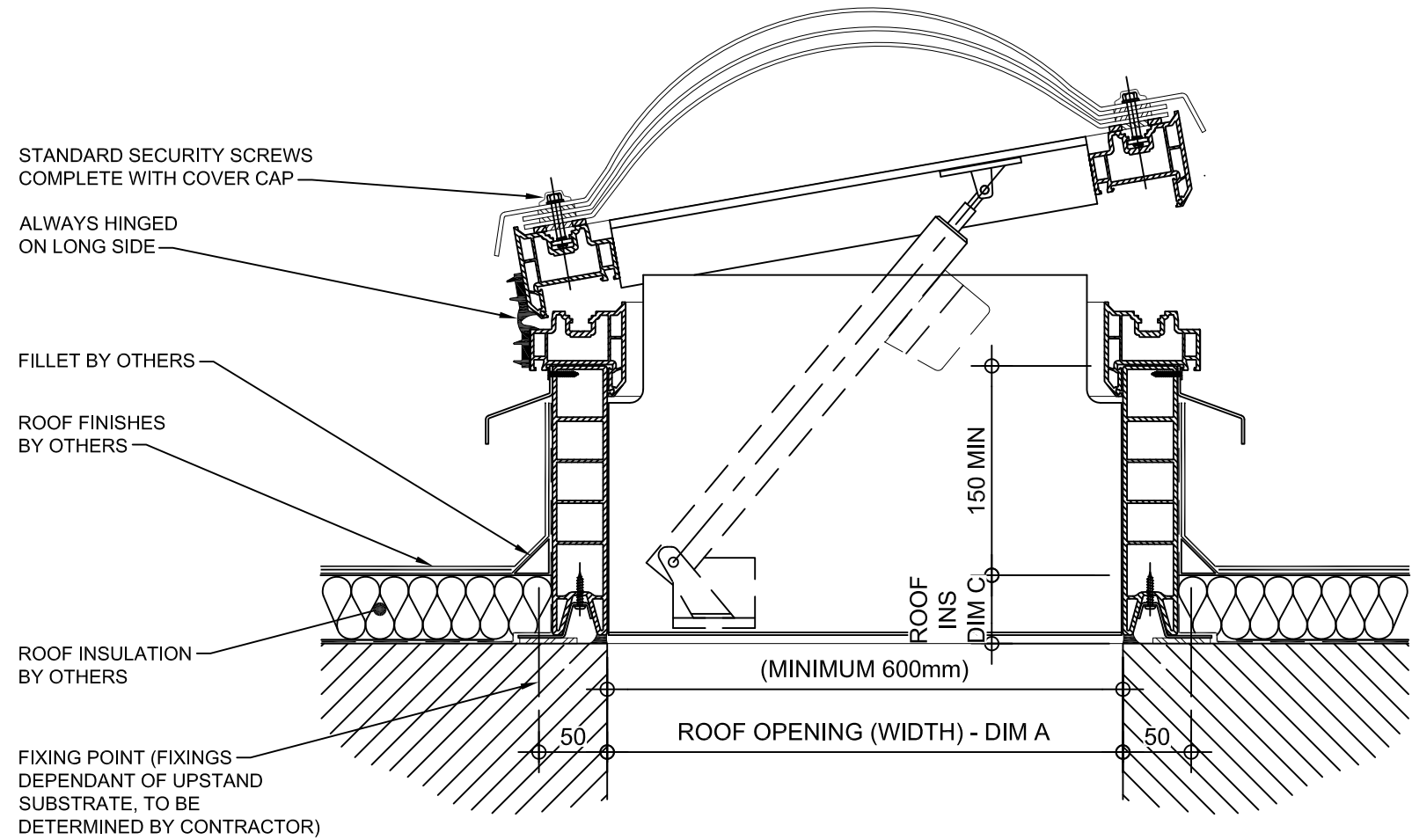


Kerb Specification:
 X2V kerb constructed from self finish white uPVC

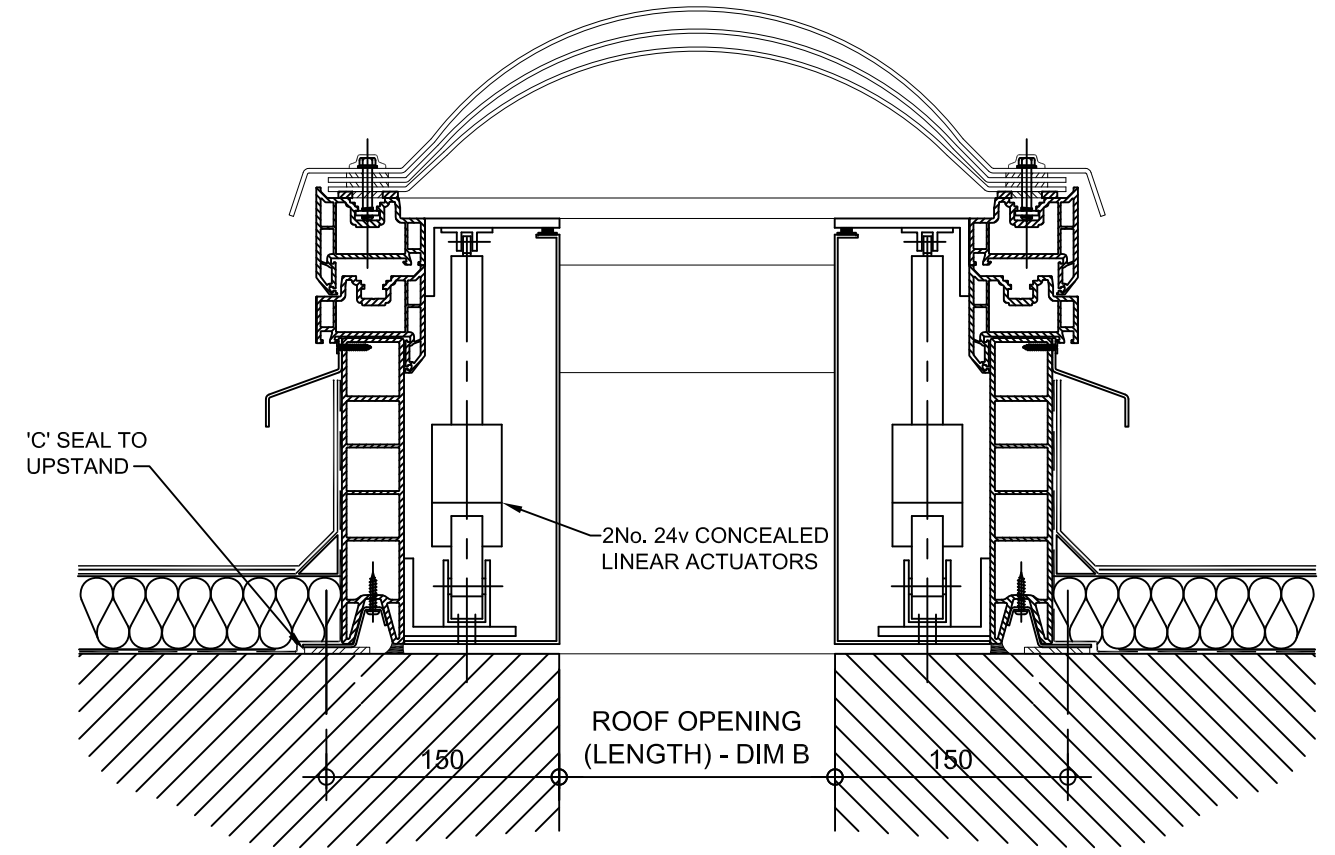
Typical Glazing Specification:
 Outer - 3mm thick clear UV protected polycarbonate
 Mid - 2mm thick clear polycarbonate
 Inner - 3mm thick clear polycarbonate




PLAN ON MODULAR ROOFLIGHT



SECTION A - A



SECTION B - B

REV:	DATE:	DESCRIPTION:	DRN BY	DESCRIPTION:					
2	06.05.14	Kerbs set back to hide motor housing	DL	uPVC X2V kerb direct to roof with 90° electrically operated automatic opening vent, Triple skin polycarbonate dome and standard security fixings. Vent actuated via 2No. concealed S1 linear motors					
1	29.11.13	Updated to show single stack	IW						
0	06.12.12	New modular drawings released	IW						
				DRAWN BY: IW	CREATION DATE: 29-Nov-13	CHECKED BY: DL	SCALE(S): 1:5 @ A3	REVISION: 2	
				Xtralite (Rooflights) Limited Spencer Road, Blyth Industrial Estate, Blyth, Northumberland, NE24 5TG T:01670 354 157 F:01670 364 875 E:sales@xtrallite.co.uk W:www.xtrallite.co.uk				 DRG No. XT-X2V-C-05-90-CM-SS	