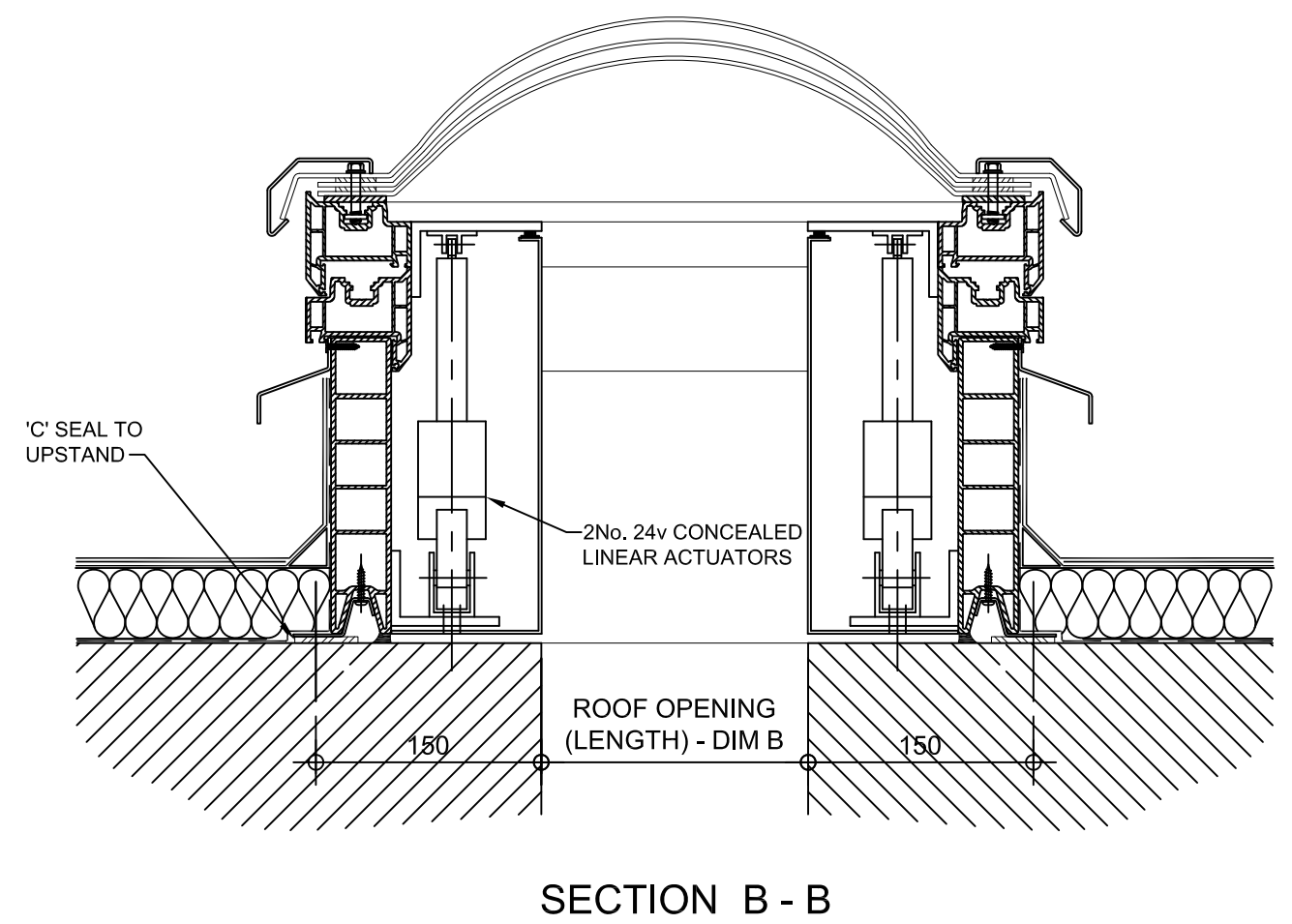
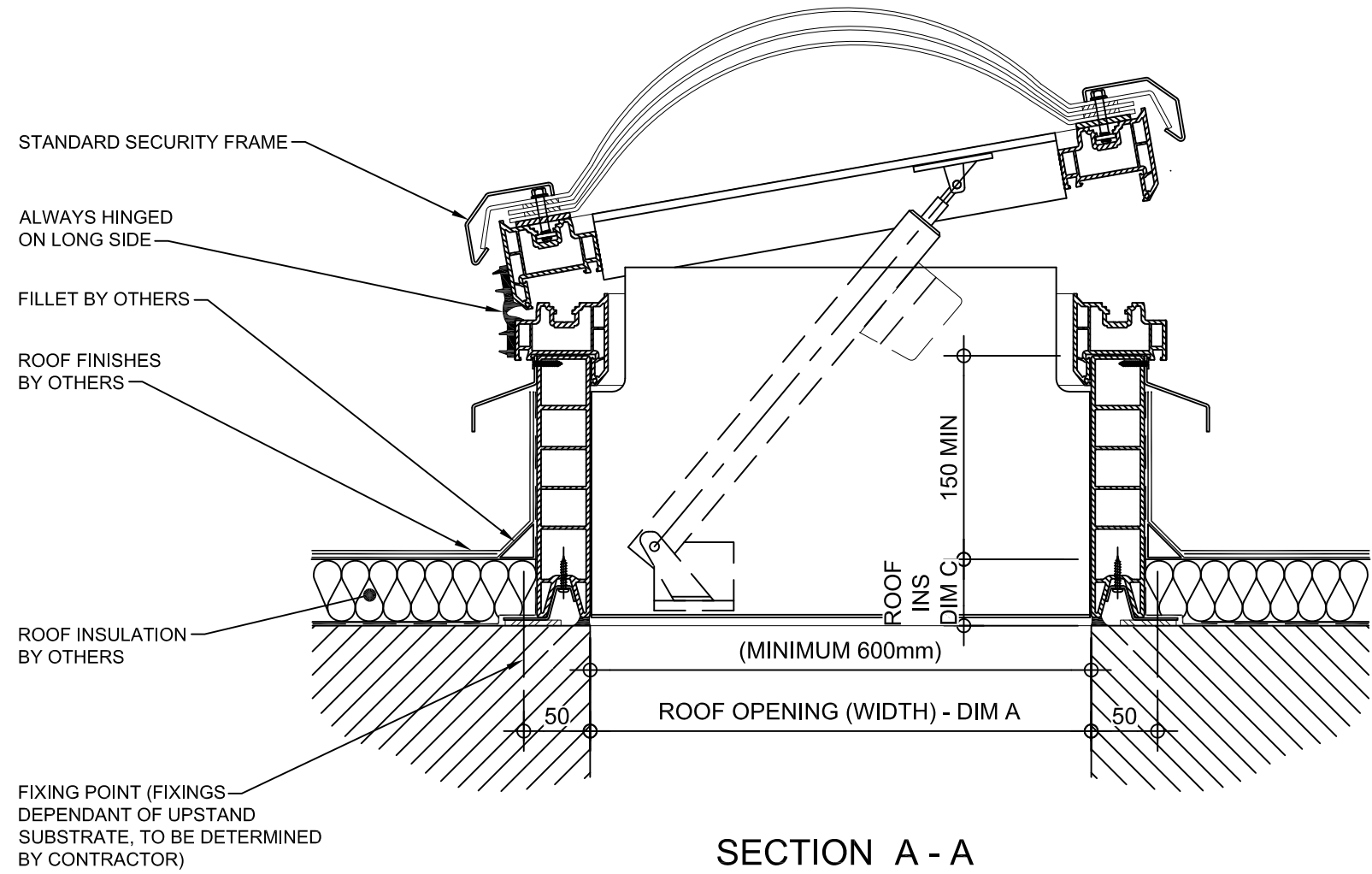


**Kerb Specification:**  
X2V kerb constructed from self finish white uPVC

**Typical Glazing Specification:**  
Outer - 3mm thick clear UV protected polycarbonate  
Mid - 2mm thick clear polycarbonate  
Inner - 3mm thick clear polycarbonate



REV:	DATE:	DESCRIPTION:	DRN BY	DESCRIPTION:					
2	06.05.14	Kerbs set back to hide motor housing	DL	uPVC X2V kerb direct to roof with 90° electrically operated automatic opening vent. Triple skin polycarbonate dome and security frame. Vent actuated via 2No. concealed S1 linear motors					
1	29.11.13	Updated to show single stack	IW						
0	06.12.12	New modular drawings released	IW						
				DRAWN BY:	CREATION DATE:	CHECKED BY:	SCALE(S)	REVISION:	
				IW	29-Nov-13	DL	1:5 @ A3	2	
				<b>Xtralite (Rooflights) Limited</b>				DRG No.	
				Spencer Road, Blyth Industrial Estate, Blyth, Northumberland, NE24 5TG				XT-X2V-C-05-90-CM-SF	
				T:01670 354 157 F:01670 364 875 E:sales@xtralite.co.uk W:www.xtralite.co.uk					

