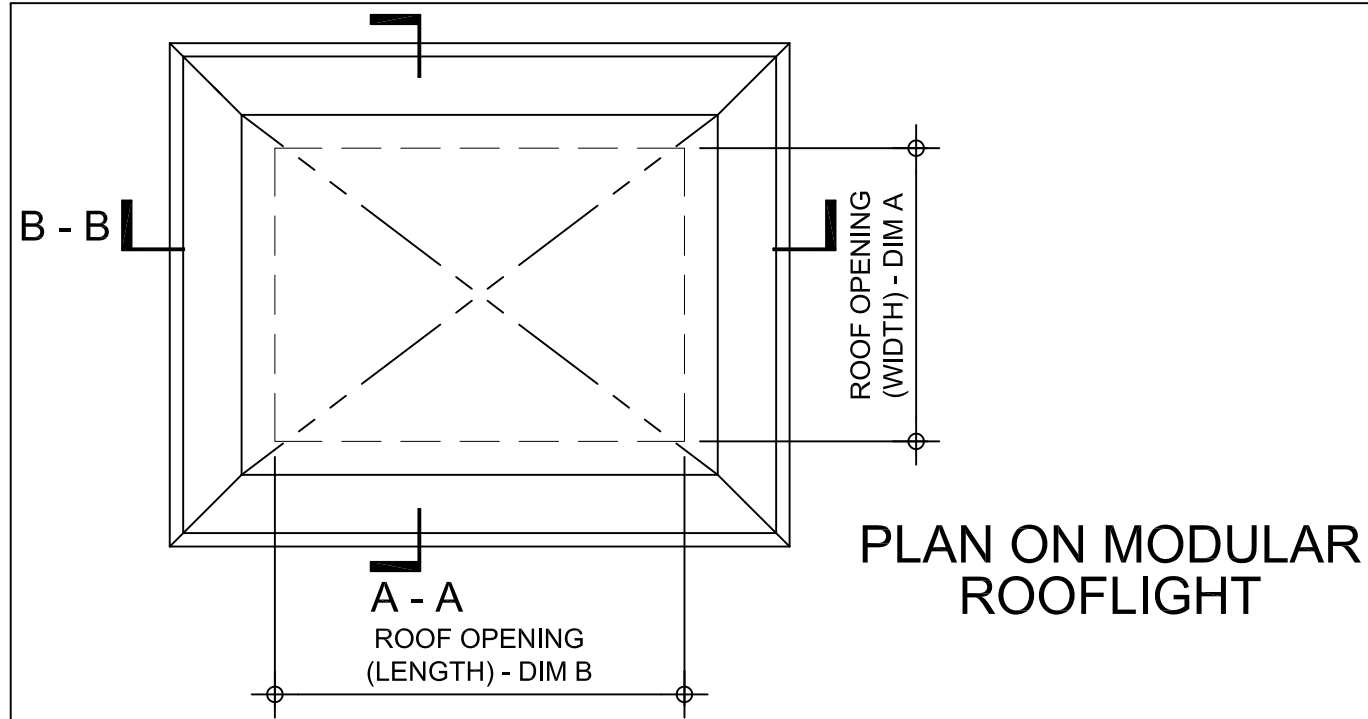
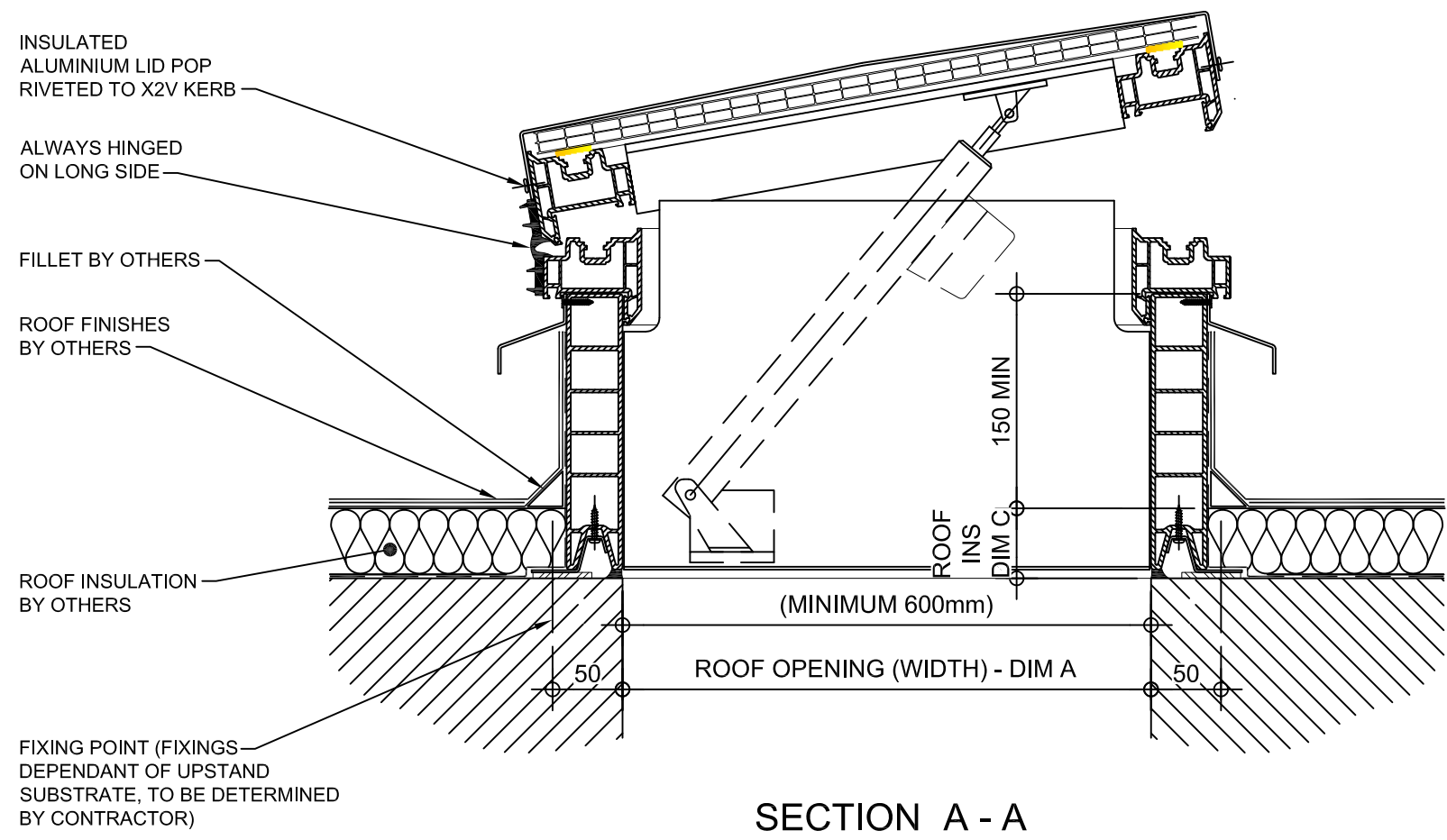


Kerb Specification:
X2V kerb constructed from self finish white uPVC

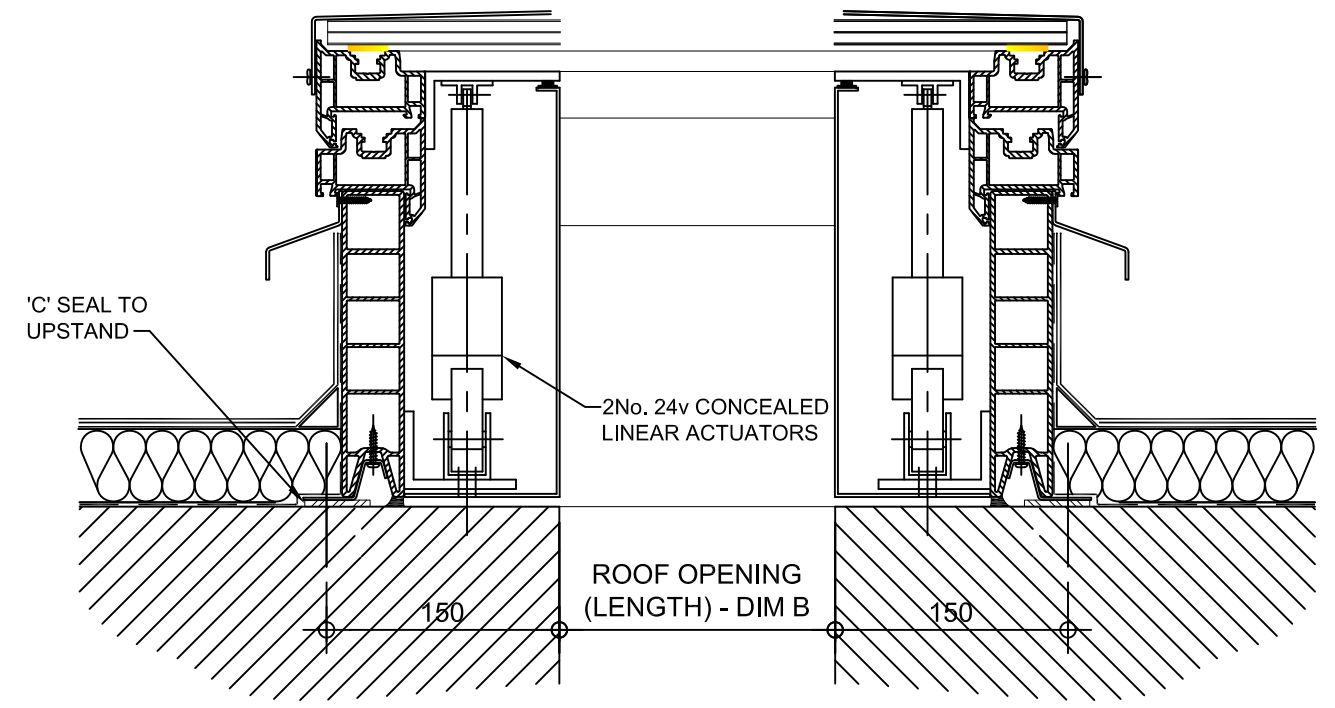
Typical Glazing Specification:
2mm thick polyester powder coated aluminium with 16mm structured polycarbonate internal liner



PLAN ON MODULAR ROOFLIGHT



SECTION A - A



SECTION B - B

REV:	DATE:	DESCRIPTION:	DRN BY	DESCRIPTION:				
2	06.05.14	Kerbs set back to hide motor housing	DL	uPVC X2V kerb direct to roof with 90° electrically operated automatic opening vent and insulated solid lid. Vent actuated via 2No. concealed S1 linear motors				
1	29.11.13	Updated to show single stack	IW					
0	06.12.12	New modular drawings released	IW					
				DRAWN BY:	CREATION DATE:	CHECKED BY:	SCALE(S)	REVISION:
				IW	29-Nov-13	DL	1:5 @ A3	2
<p>Xtralite (Rooflights) Limited Spencer Road, Blyth Industrial Estate, Blyth, Northumberland, NE24 5TG T:01670 354 157 F:01670 364 875 E:sales@xtralite.co.uk W:www.xtralite.co.uk</p>								

Xtralite
ROOFLIGHTS

DRG No.
XT-X2V-C-05-90-CM-ISL