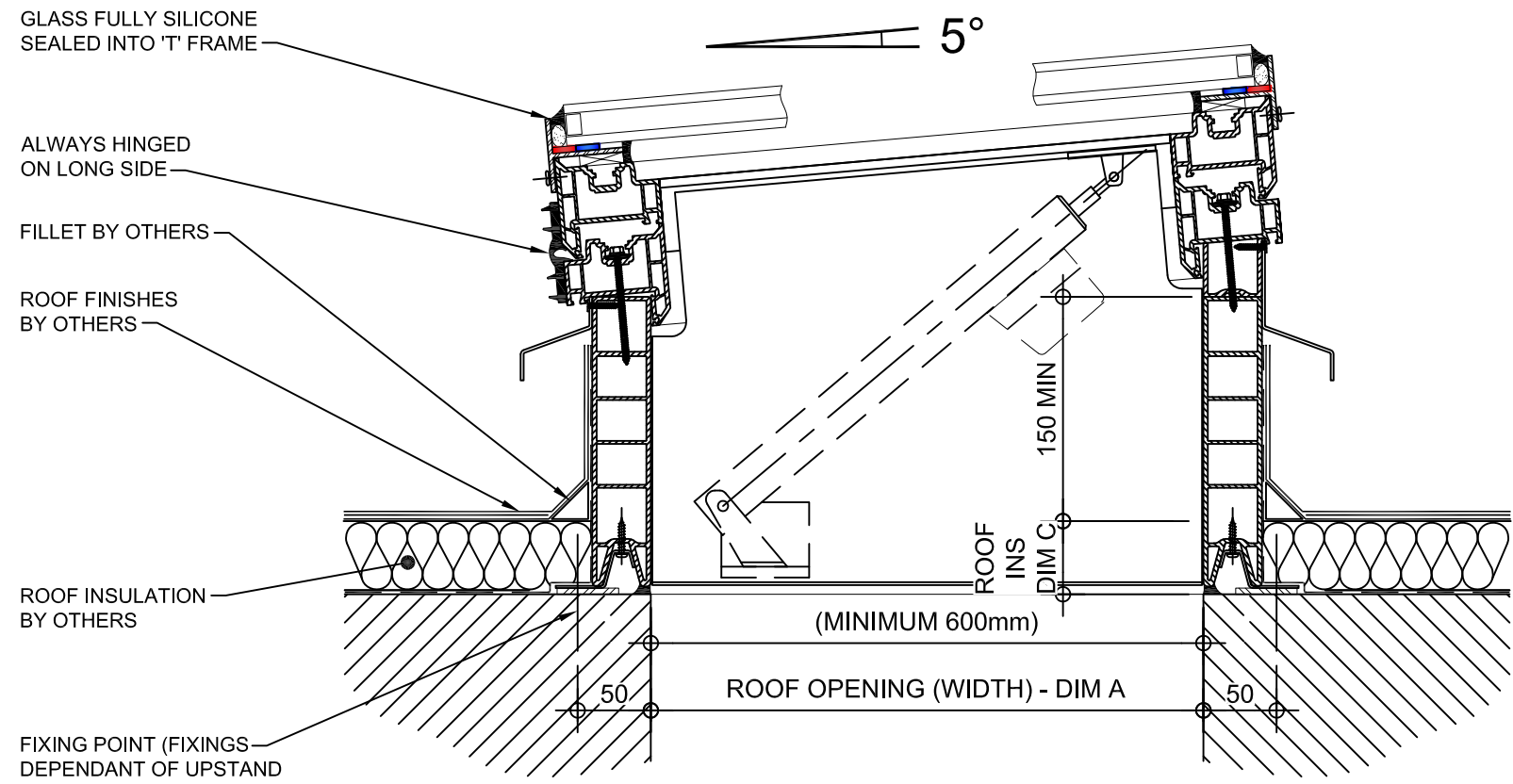


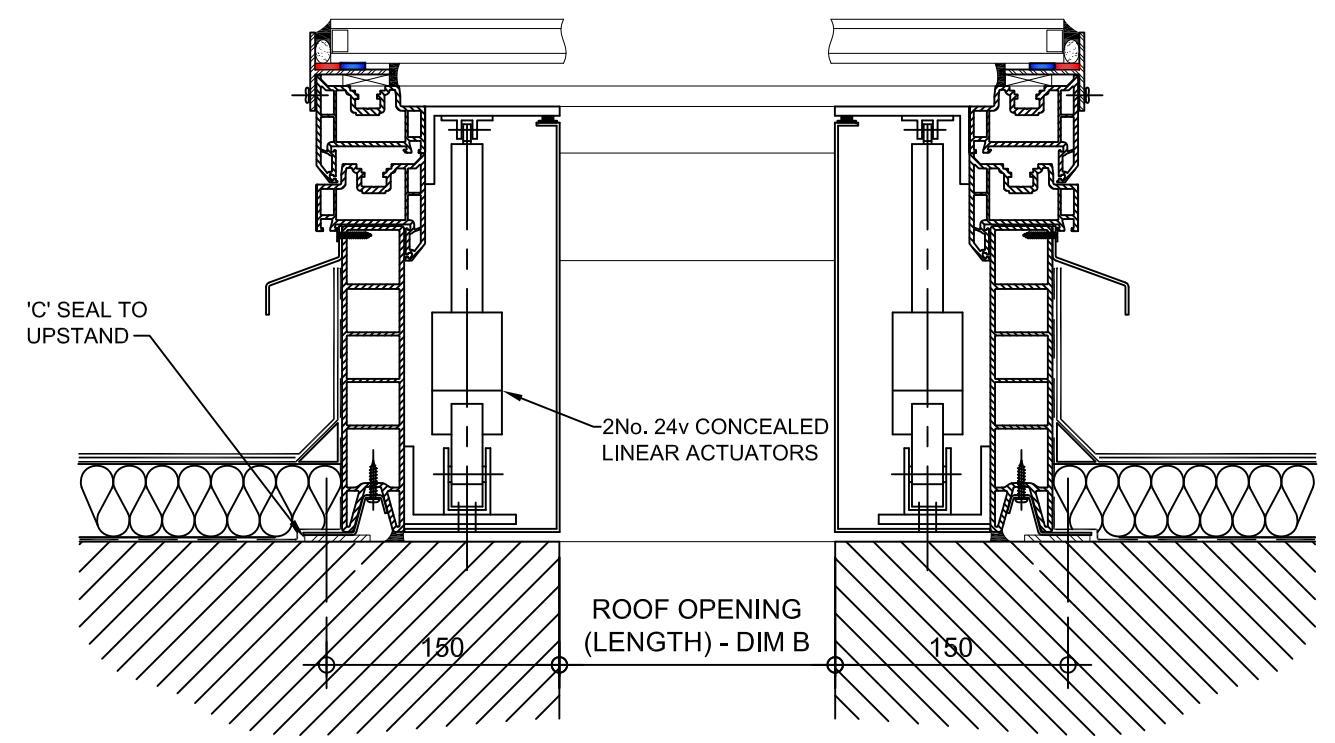
PLAN ON MODULAR ROOFLIGHT

Kerb Specification:
 X2V kerb constructed from self finish white uPVC

Typical Glazing Specification:
 Outer - 6mm thick clear toughened glass
 Core - 16mm thick air filled cavity
 Inner - 6.4mm thick clear laminated low 'E' glass



SECTION A - A



SECTION B - B

REV:	DATE:	DESCRIPTION:	DRN BY	DESCRIPTION:					
2	06.05.14	Kerbs set back to hide motor housing	DL	uPVC X2V kerb direct to roof with 90° electrically operated automatic opening vent and double glazed pitched glass top. Vent actuated via 2No. concealed S1 linear motors					
1	29.11.13	Updated to show single stack	IW						
0	06.12.12	New modular drawings released	IW						
				DRAWN BY: IW	CREATION DATE: 29-Nov-13	CHECKED BY: DL	SCALE(S): 1:5 @ A3	REVISION: 2	
				Xtralite (Rooflights) Limited Spencer Road, Blyth Industrial Estate, Blyth, Northumberland, NE24 5TG T:01670 354 157 F:01670 364 875 E:sales@xtralite.co.uk W:www.xtralite.co.uk					

Xtralite
ROOFLIGHTS

DRG No.
XT-X2V-C-05-90-CM-IGLP