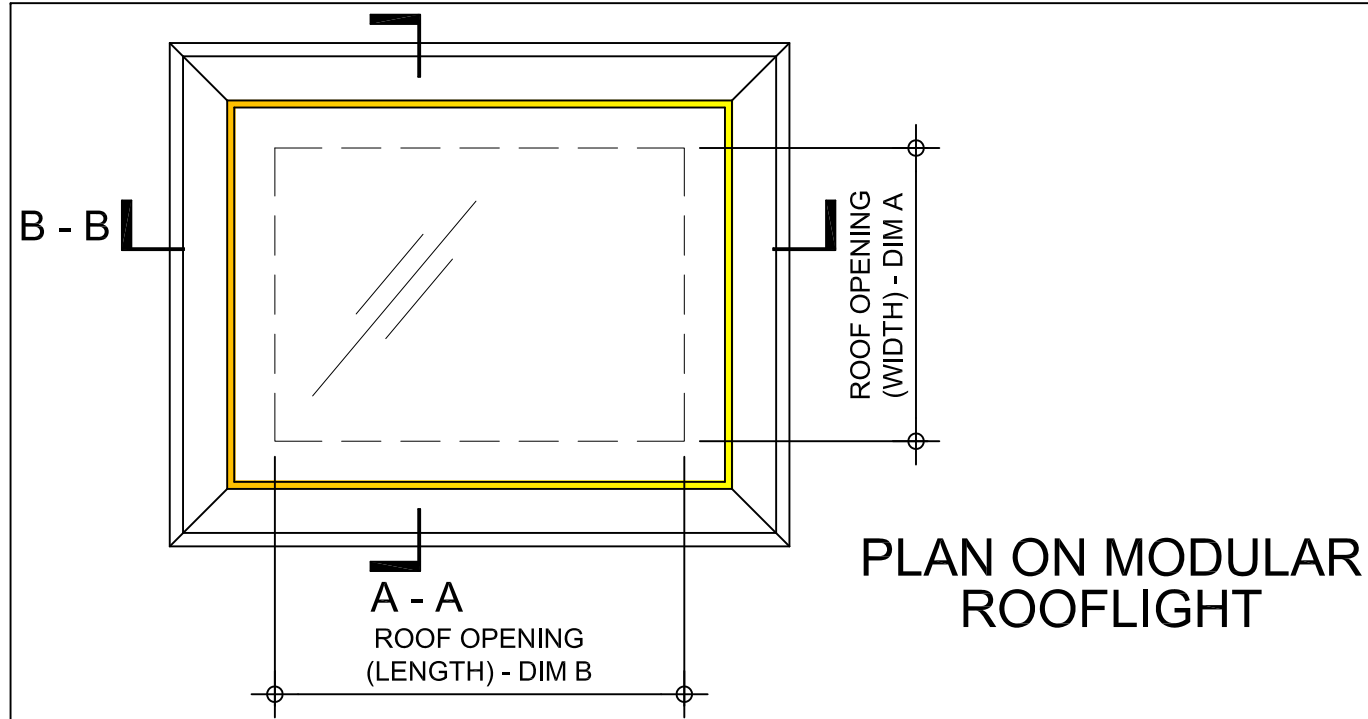
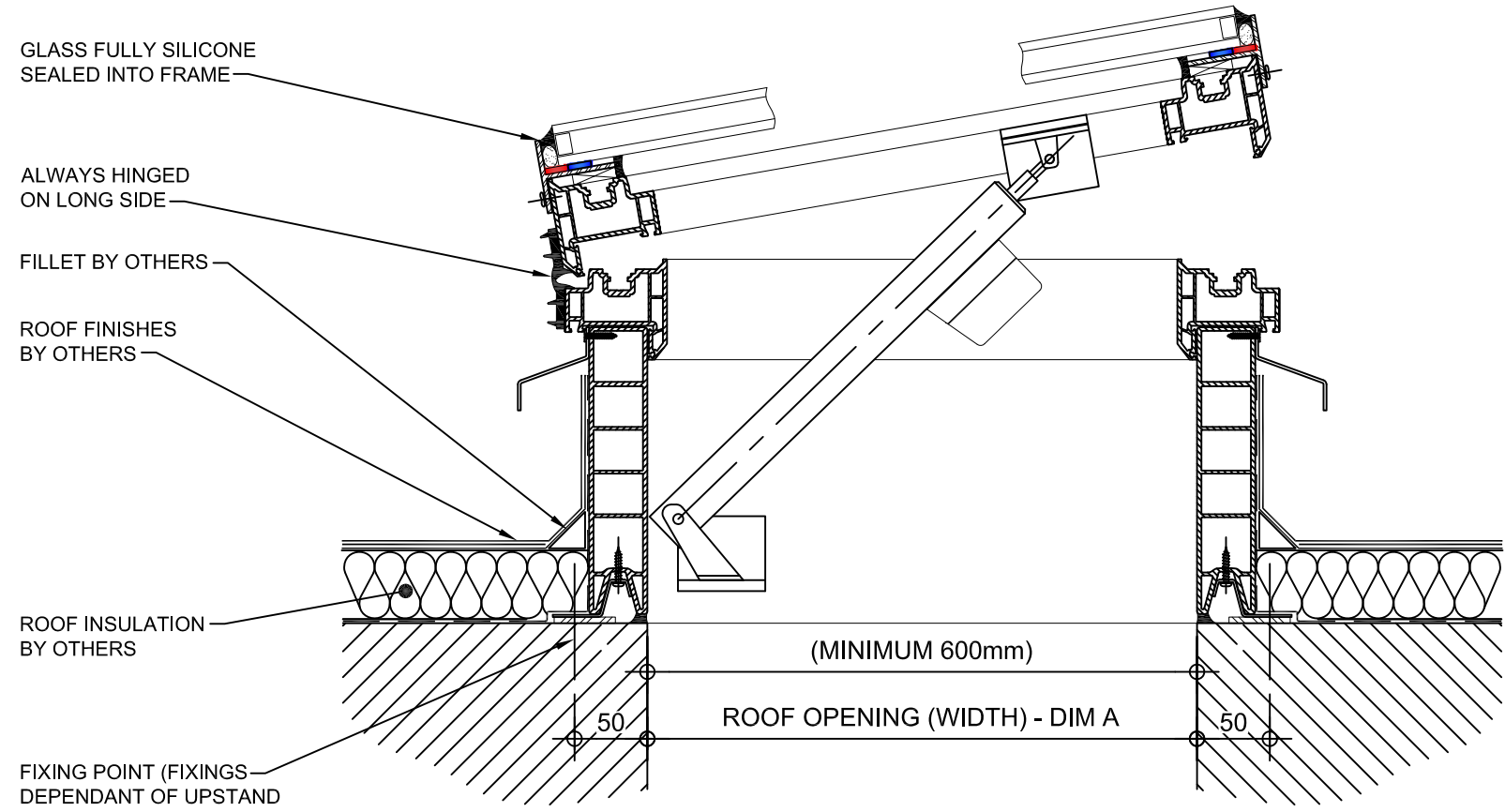


**Kerb Specification:**  
 X2V kerb constructed from self finish  
 white uPVC

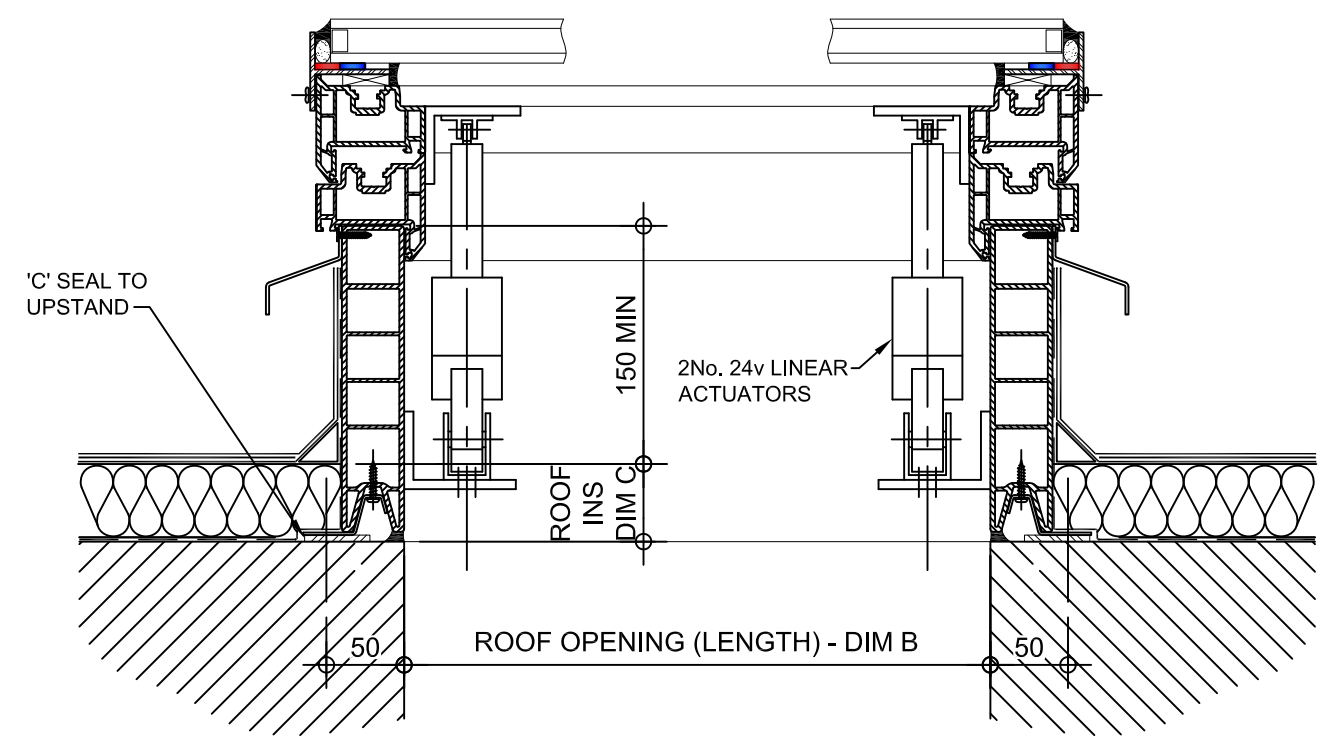
**Typical Glazing Specification:**  
 Outer - 6mm thick clear toughened glass  
 Core - 16mm thick air filled cavity  
 Inner - 6.4mm thick clear laminated low 'E' glass



**PLAN ON MODULAR ROOFLIGHT**



**SECTION A - A**



**SECTION B - B**

| REV:  | DATE:    | DESCRIPTION:                  | DRN BY      | DESCRIPTION:   |           |
|---|----------|-------------------------------|-------------|--|-----------|
| 1   | 29.11.13 | Updated to show single stack  | IW          | uPVC X2V kerb direct to roof with 90° electrically operated automatic opening vent and double glazed flat glass top. |           |
| 0   | 06.12.12 | New modular drawings released | IW          |  |           |
| DRAWN BY:   |          | CREATION DATE:                | CHECKED BY: | SCALE(S)   | REVISION: |
| IW  |          | 29-Nov-13                     | DL          | 1:5 @ A3   | 1         |
| <b>Xtralite (Rooflights) Limited</b><br>Spencer Road, Blyth Industrial Estate, Blyth, Northumberland, NE24 5TG<br>T:01670 354 157 F:01670 364 875 E:sales@xtralite.co.uk W:www.xtralite.co.uk |          |                               |             |  |           |

DRG No.  
**XT-X2V-C-05-90-IGLF**