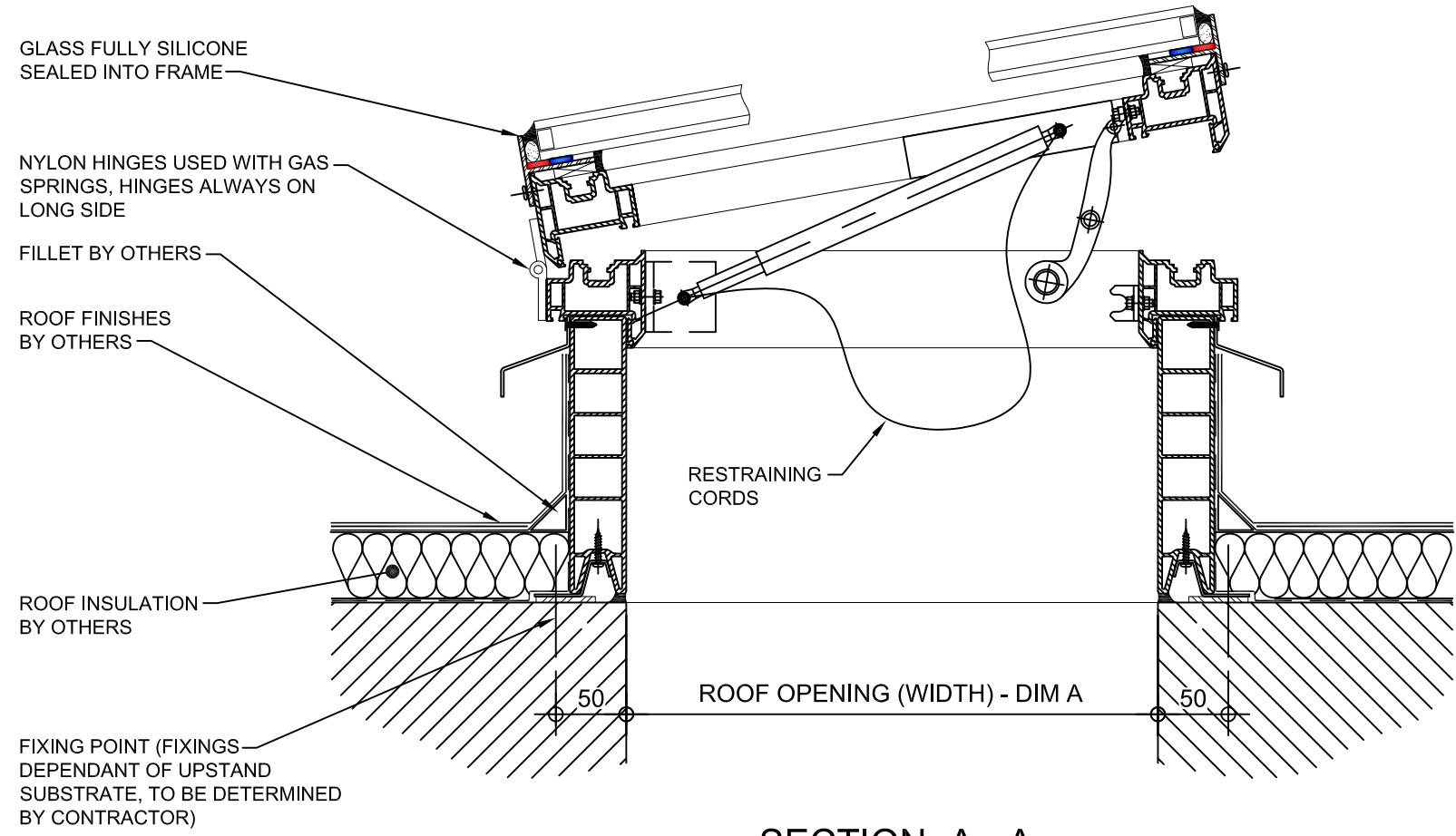


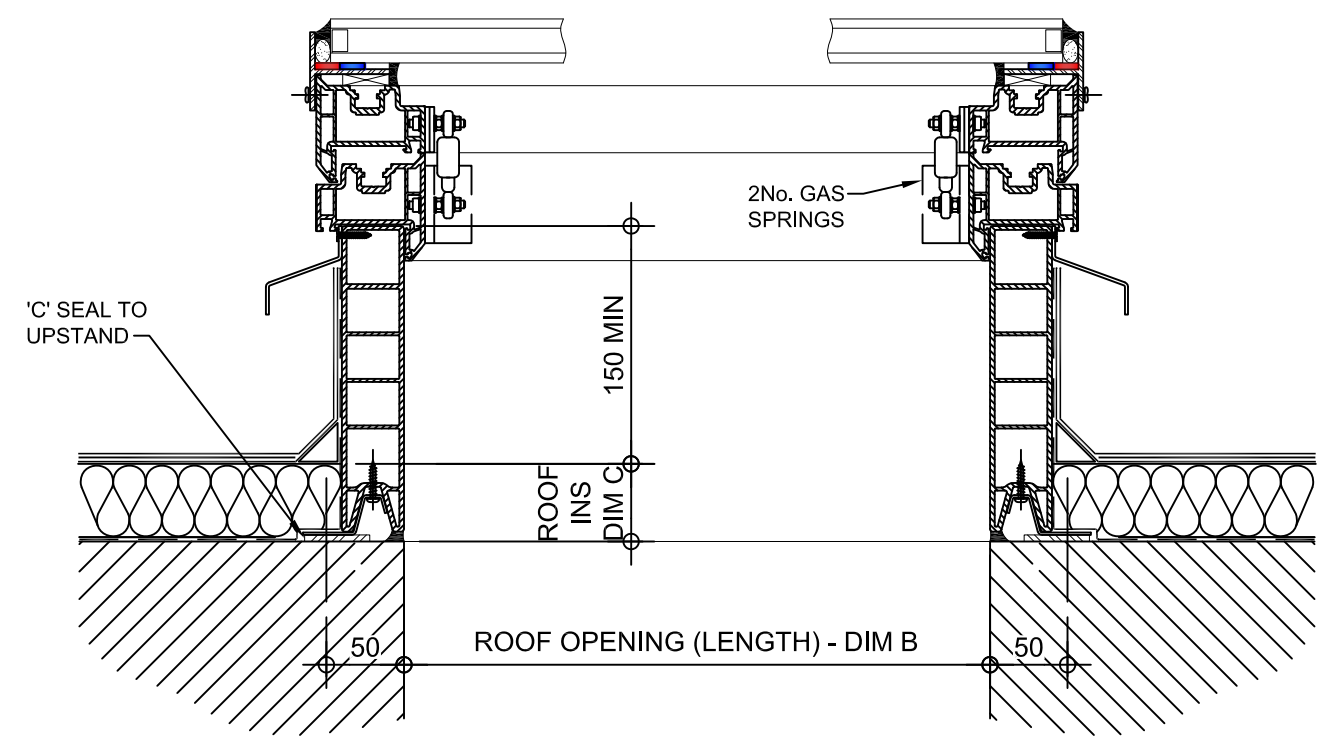
PLAN ON MODULAR ROOFLIGHT

Kerb Specification:
 X2V kerb constructed from self finish white uPVC


Typical Glazing Specification:
 Outer - 6mm thick clear toughened glass
 Core - 16mm thick air filled cavity
 Inner - 6.4mm thick clear laminated low 'E' glass



SECTION A - A



SECTION B - B

REV:	DATE:	DESCRIPTION:	DRN BY	DESCRIPTION:					
1	29.11.13	Updated to show single stack	IW	uPVC X2V kerb direct to roof. Access hatch with gas spring opening and double glazed flat glass top.					
0	06.12.12	New modular drawings released	IW						
				DRAWN BY:	CREATION DATE:	CHECKED BY:	SCALE(S)	REVISION:	
				IW	19-Dec-13	DL	1:5 @ A3	1	
				Xtralite (Rooflights) Limited				 DRG No. XT-X2V-C-04G-IGLF	
				Spencer Road, Blyth Industrial Estate, Blyth, Northumberland, NE24 5TG					
				T:01670 354 157 F:01670 364 875 E:sales@xtralite.co.uk W:www.xtralite.co.uk					