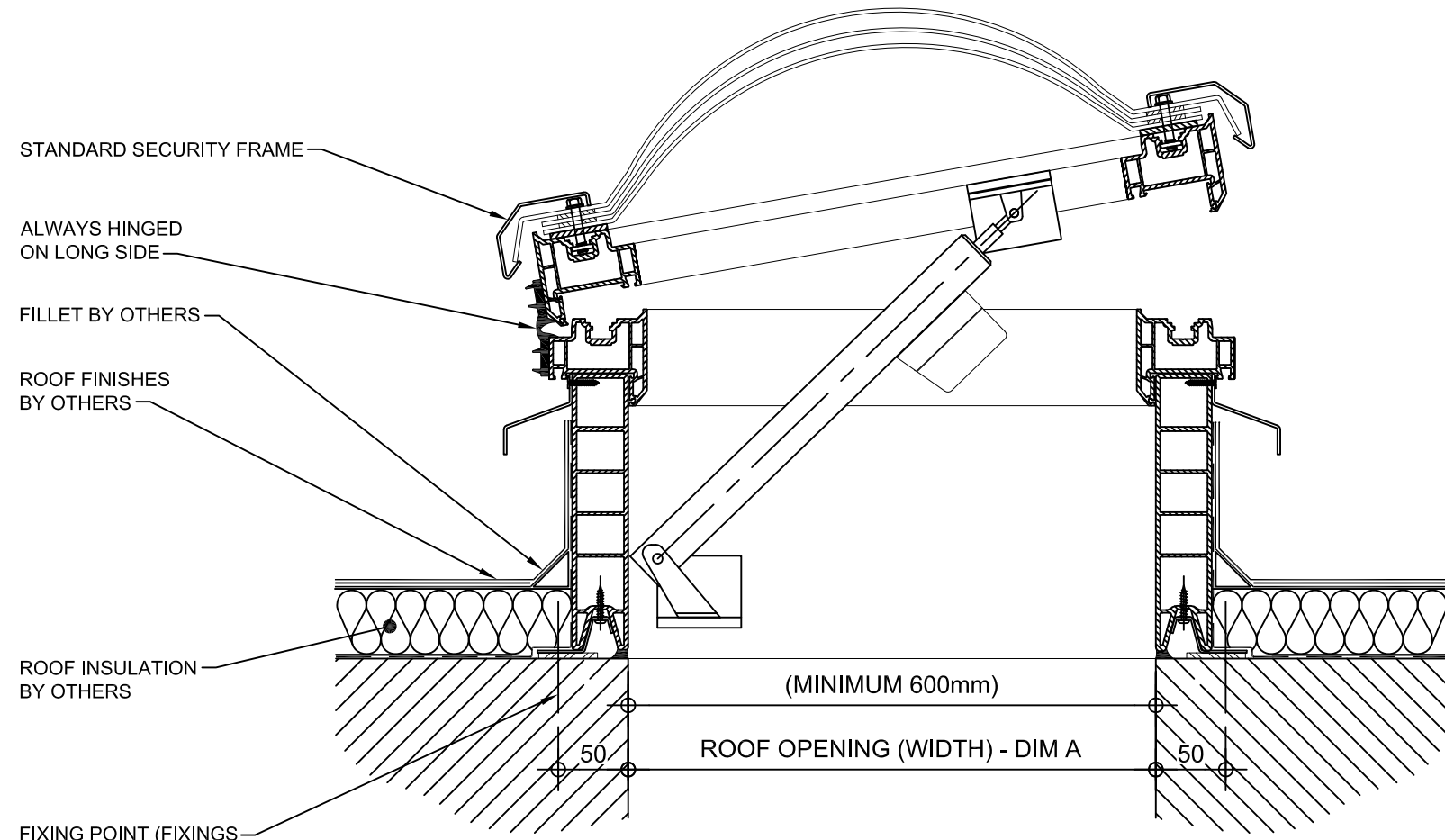


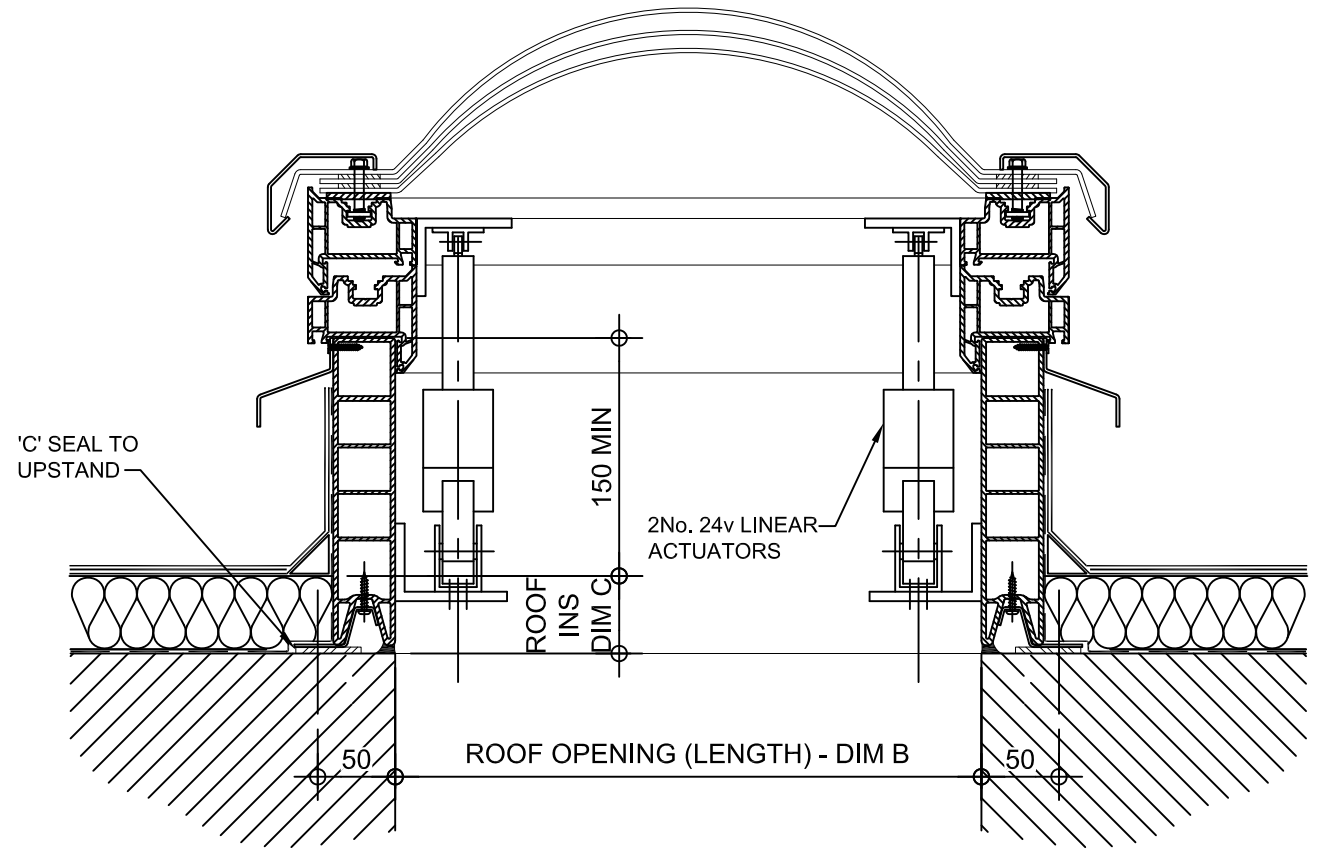
**PLAN ON MODULAR ROOFLIGHT**

**Kerb Specification:**  
 X2V kerb constructed from self finish white uPVC

**Typical Glazing Specification:**  
 Outer - 3mm thick clear UV protected polycarbonate  
 Mid - 2mm thick clear polycarbonate  
 Inner - 3mm thick clear polycarbonate



**SECTION A - A**



**SECTION B - B**

REV:	DATE:	DESCRIPTION:	DRN BY	DESCRIPTION:					
1	29.11.13	Updated to show single stack	IW	uPVC X2V kerb direct to roof, Access hatch with electrically operated opening vent. Triple skin polycarbonate dome and security frame.					
0	06.12.12	New modular drawings released	IW						
				DRAWN BY:	CREATION DATE:	CHECKED BY:	SCALE(S)	REVISION:	
				IW	29-Nov-13	DL	1:5 @ A3	1	
				<b>Xtralite (Rooflights) Limited</b>				DRG No.	
				Spencer Road, Blyth Industrial Estate, Blyth, Northumberland, NE24 5TG				XT-X2V-C-04E-SF	
				T:01670 354 157 F:01670 364 875 E:sales@xtralite.co.uk W:www.xtralite.co.uk					

