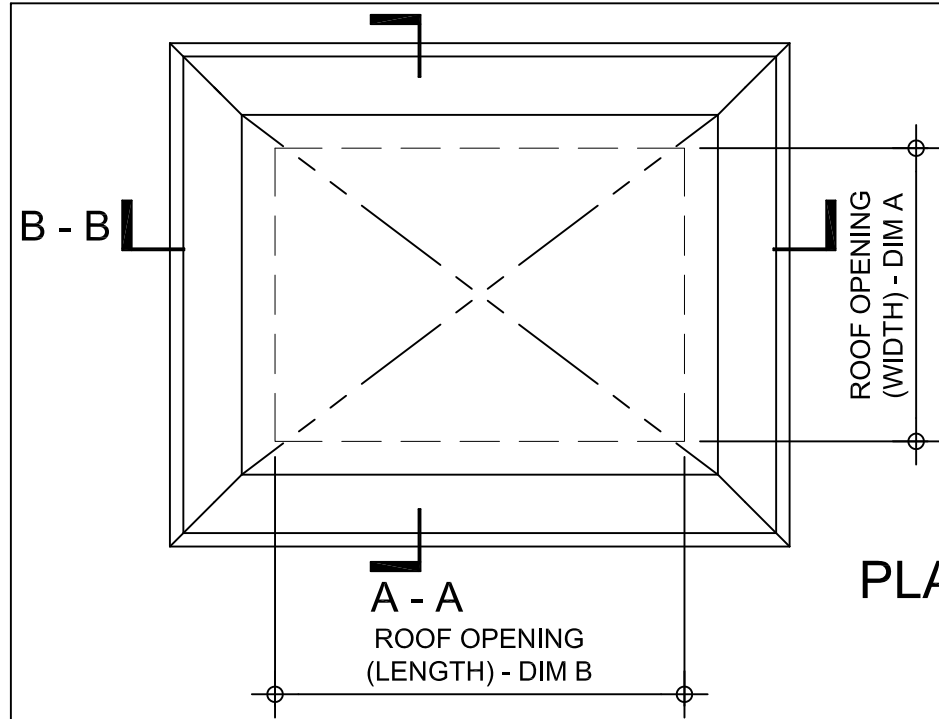
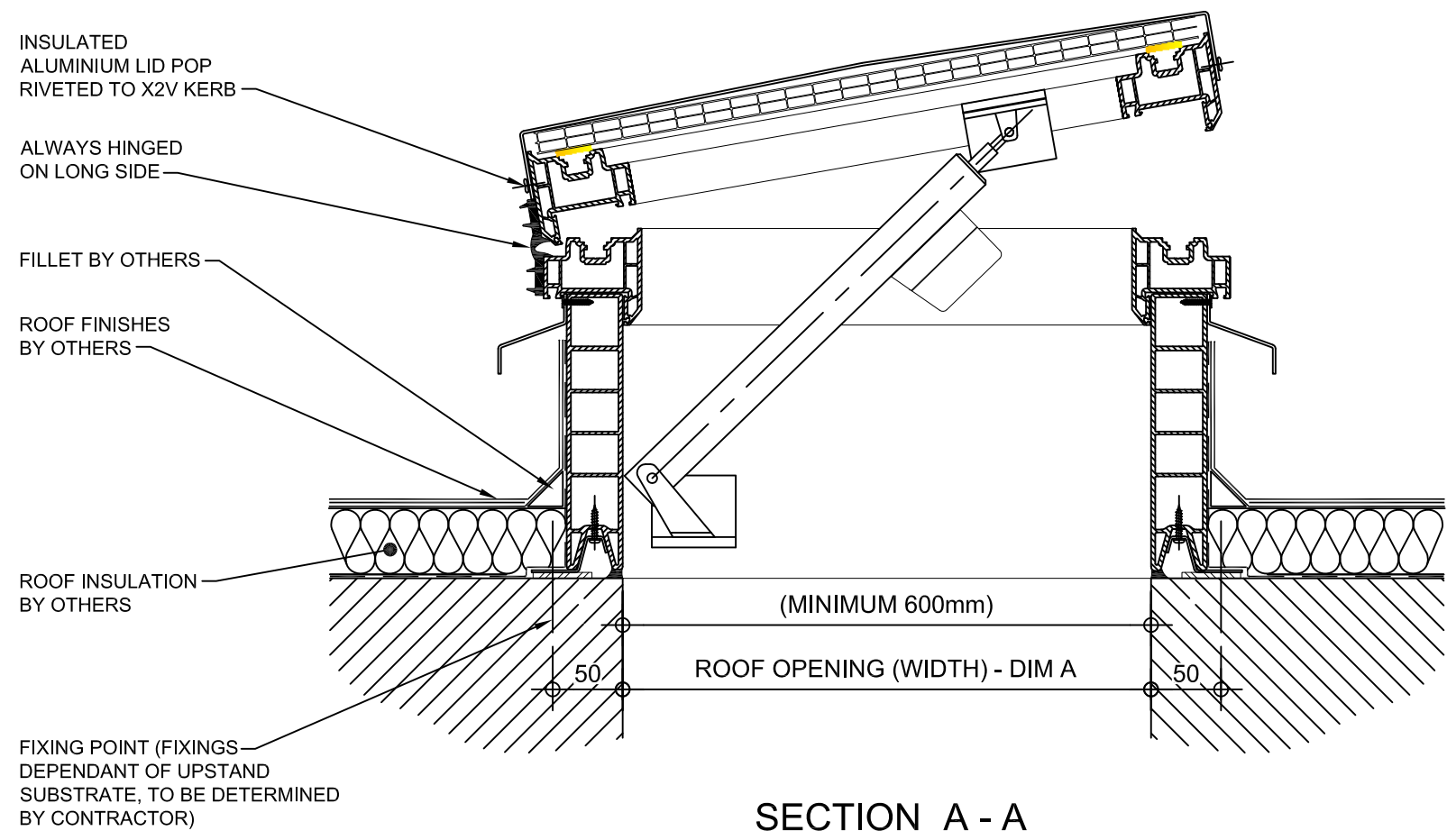


**Kerb Specification:**  
X2V kerb constructed from self finish white uPVC

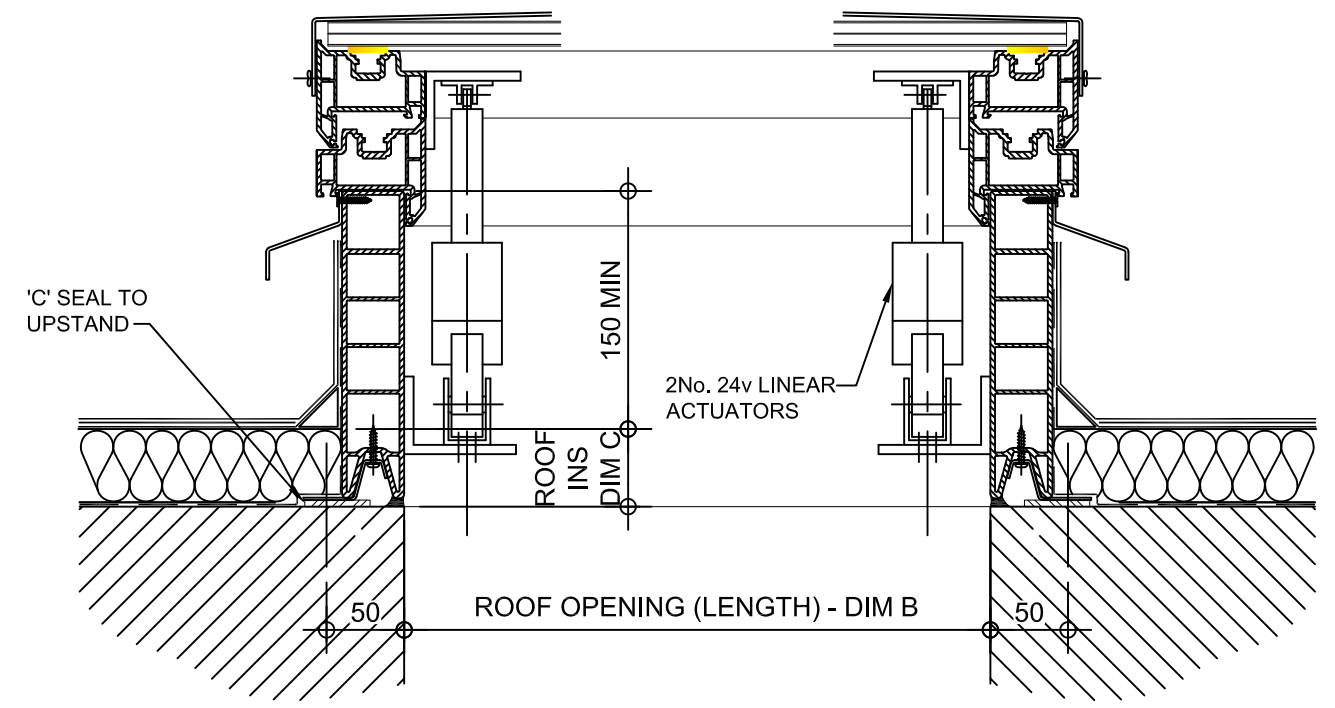
**Typical Glazing Specification:**  
2mm thick polyester powder coated aluminium with 16mm structured polycarbonate internal liner



**PLAN ON MODULAR ROOFLIGHT**



**SECTION A - A**



**SECTION B - B**

REV:	DATE:	DESCRIPTION:	DRN BY	DESCRIPTION:	
1	29.11.13	Updated to show single stack	IW	uPVC X2V kerb direct to roof, Access hatch with electrically operated opening vent & insulated solid lid.	
0	06.12.12	New modular drawings released	IW		
DRAWN BY:		CREATION DATE:	CHECKED BY:	SCALE(S)	REVISION:
IW		29-Nov-13	DL	1:5 @ A3	1
<p><b>Xtralite (Rooflights) Limited</b>                      Spencer Road, Blyth Industrial Estate, Blyth, Northumberland, NE24 5TG                      T:01670 354 157 F:01670 364 875 E:sales@xtralite.co.uk W:www.xtralite.co.uk</p>					

DRG No.  
**XT-X2V-C-04E-ISL**