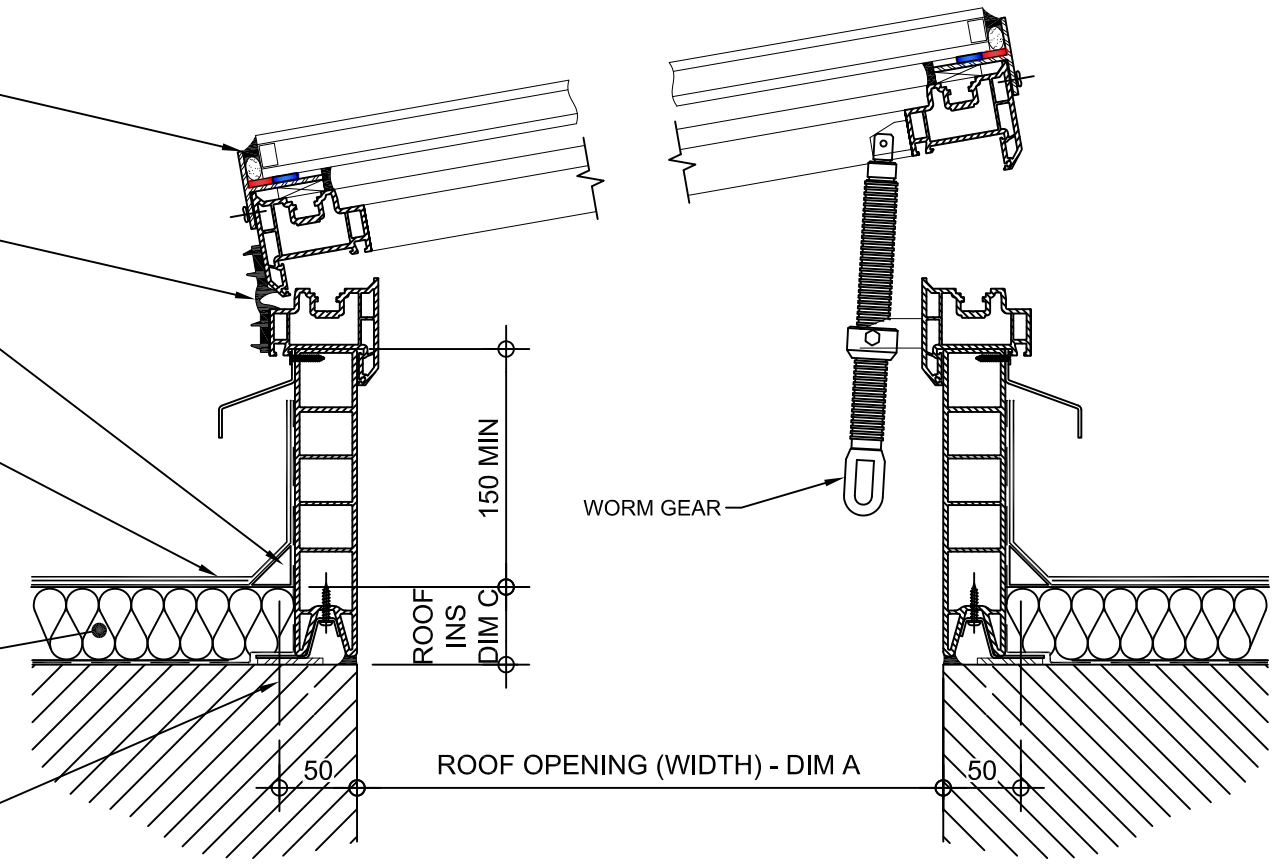


PLAN ON MODULAR ROOFLIGHT

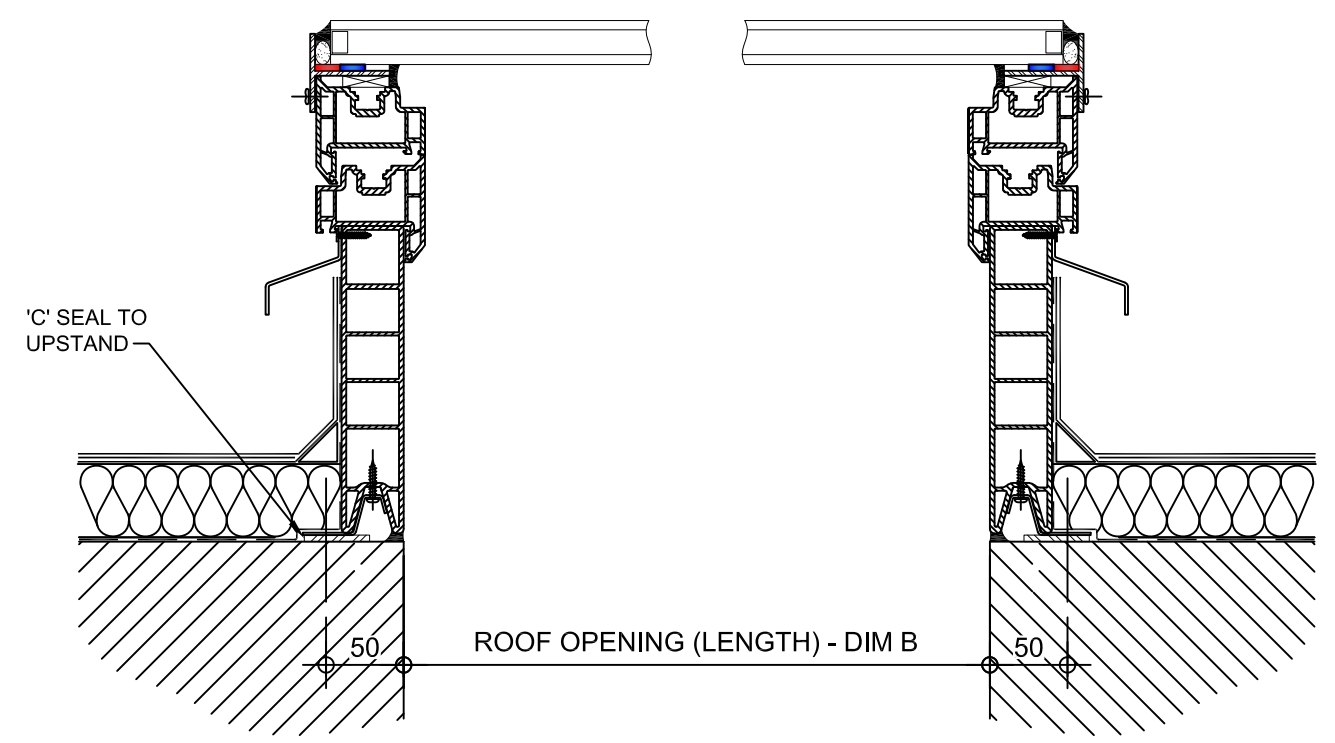
Kerb Specification:
 X2V kerb constructed from self finish white uPVC

Typical Glazing Specification:
 Outer - 6mm thick clear toughened glass
 Core - 16mm thick air filled cavity
 Inner - 6.4mm thick clear laminated low 'E' glass

GLASS FULLY SILICONE SEALED INTO FRAME
 ALWAYS HINGED ON LONG SIDE
 FILLET BY OTHERS
 ROOF FINISHES BY OTHERS
 ROOF INSULATION BY OTHERS
 FIXING POINT (FIXINGS DEPENDANT OF UPSTAND SUBSTRATE, TO BE DETERMINED BY CONTRACTOR)



SECTION A - A



SECTION B - B

| REV: | DATE: | DESCRIPTION: | DRN BY | DESCRIPTION: |
|------|----------|-------------------------------|--------|---|
| 1 | 29.11.13 | Updated to show single stack | IW | uPVC X2V kerb direct to roof with wormgear opening vent and double glazed flat glass top. |
| 0 | 06.12.12 | New modular drawings released | IW | |
| | | | | DRAWN BY: IW |
| | | | | CREATION DATE: 29-Nov-13 |
| | | | | CHECKED BY: DL |
| | | | | SCALE(S): 1:5 @ A3 |
| | | | | REVISION: 1 |
| | | | | Xtralite (Rooflights) Limited Spencer Road, Blyth Industrial Estate, Blyth, Northumberland, NE24 5TG T:01670 354 157 F:01670 364 875 E:sales@xtralite.co.uk W:www.xtralite.co.uk |

DRG No.
XT-X2V-C-03-IGLF