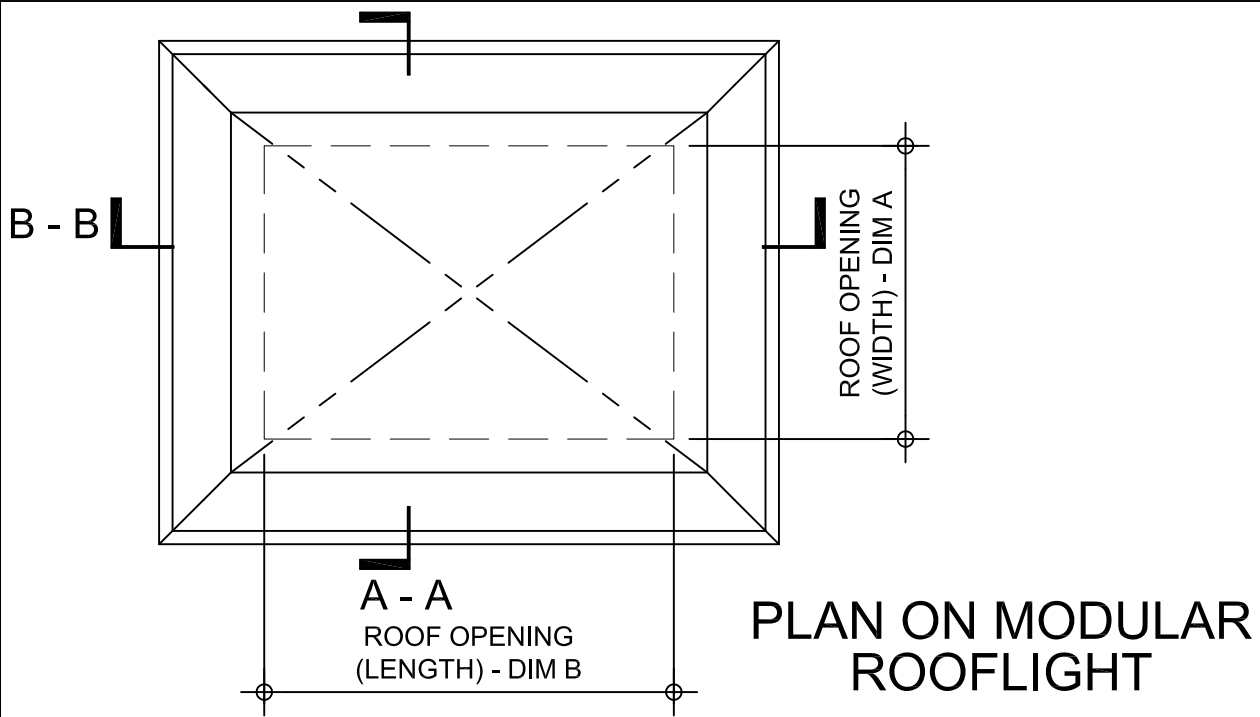


Kerb Specification:
 X2V kerb constructed from self finish
 white uPVC

Typical Glazing Specification:
 2mm thick polyester powder coated aluminium
 with 16mm structured polycarbonate internal liner



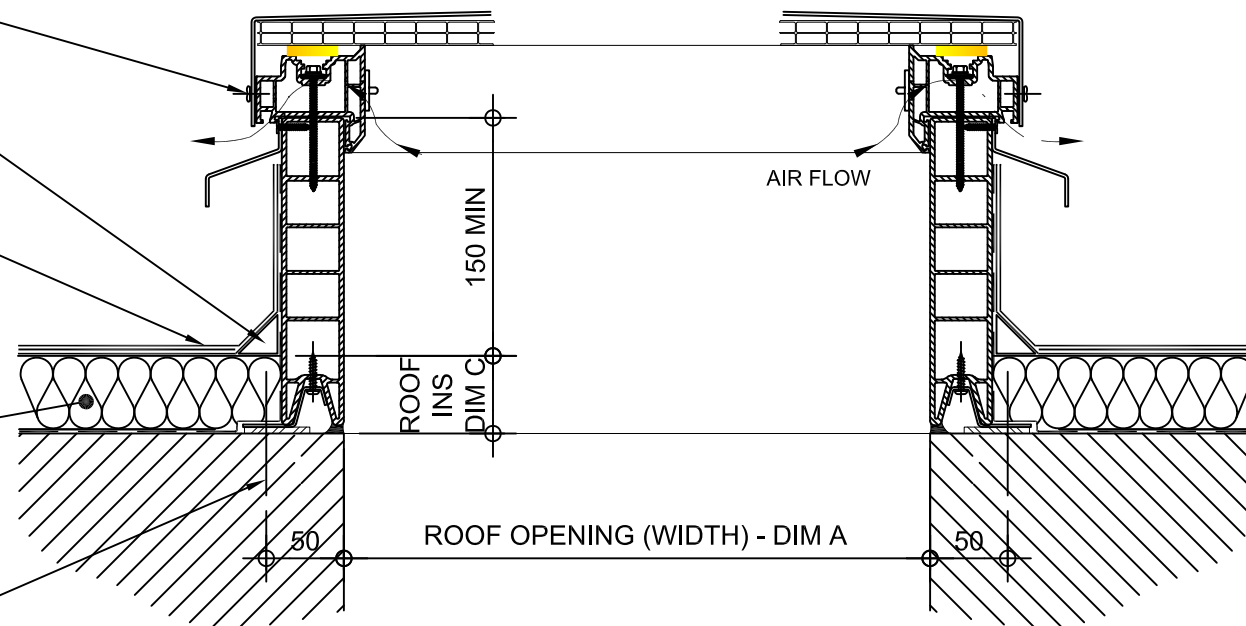
INSULATED ALUMINIUM LID POP RIVETED TO X2V KERB

FILLET BY OTHERS

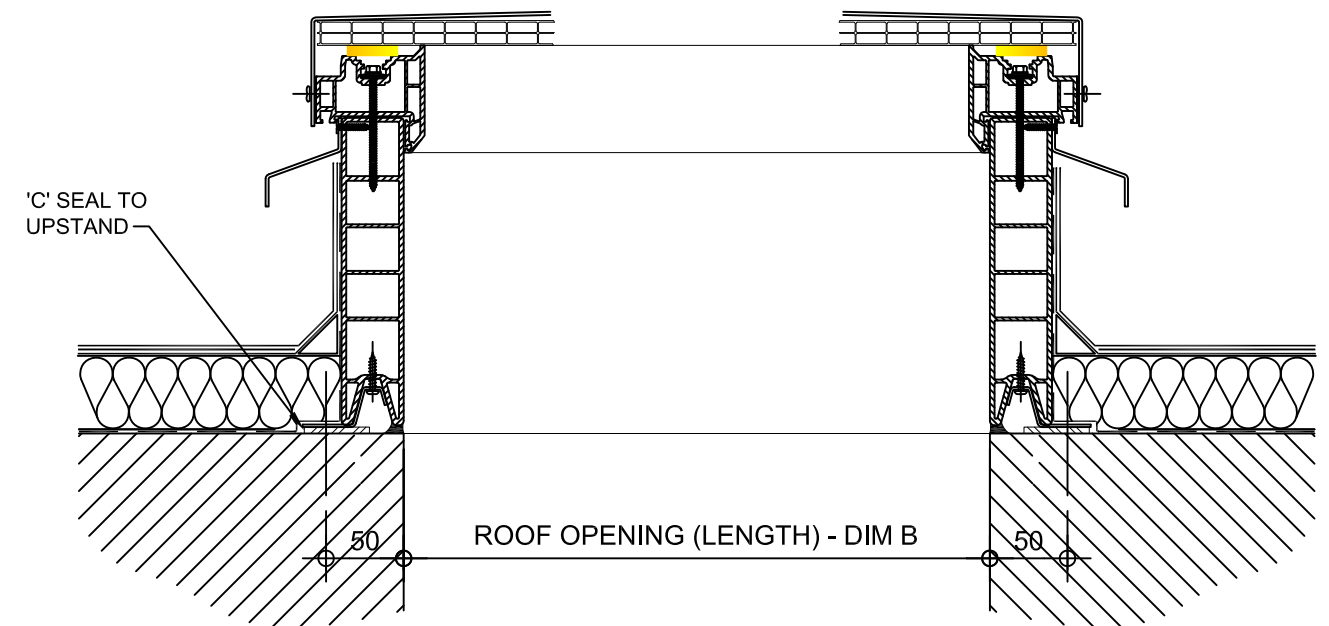
ROOF FINISHES BY OTHERS

ROOF INSULATION BY OTHERS

FIXING POINT (FIXINGS DEPENDANT OF UPSTAND SUBSTRATE, TO BE DETERMINED BY CONTRACTOR)



SECTION A - A



SECTION B - B

REV:	DATE:	DESCRIPTION:	DRN BY	DESCRIPTION:
1	29.11.13	Updated to show single stack	IW	uPVC X2V kerb with hit & miss ventilation, direct to roof with insulated solid lid.
0	06.12.12	New modular drawings released	IW	
				DRAWN BY: IW
				CREATION DATE: 29-Nov-13
				CHECKED BY: DL
				SCALE(S): 1:5 @ A3
				REVISION: 1
				Xtralite (Rooflights) Limited
				Spencer Road, Blyth Industrial Estate, Blyth, Northumberland, NE24 5TG
				T:01670 354 157 F:01670 364 875 E:sales@xtralite.co.uk W:www.xtralite.co.uk
				DRG No. XT-X2V-C-01-ISL

