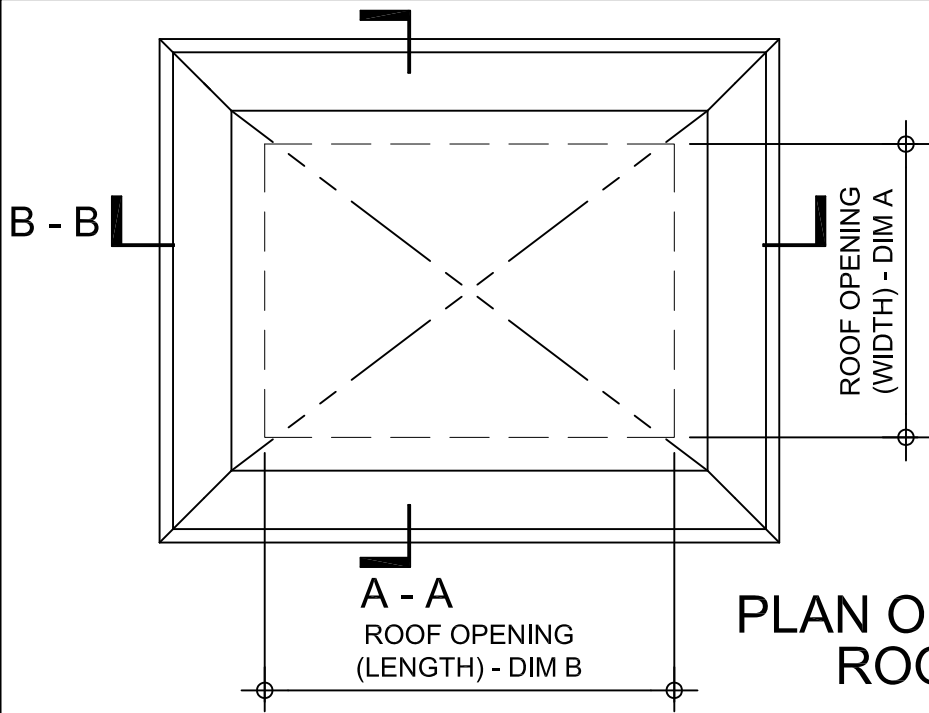


Kerb Specification:
 X2V kerb constructed from self finish
 white uPVC

Typical Glazing Specification:
 2mm thick polyester powder coated aluminium
 with 16mm structured polycarbonate internal liner



**PLAN ON MODULAR
 ROOFLIGHT**

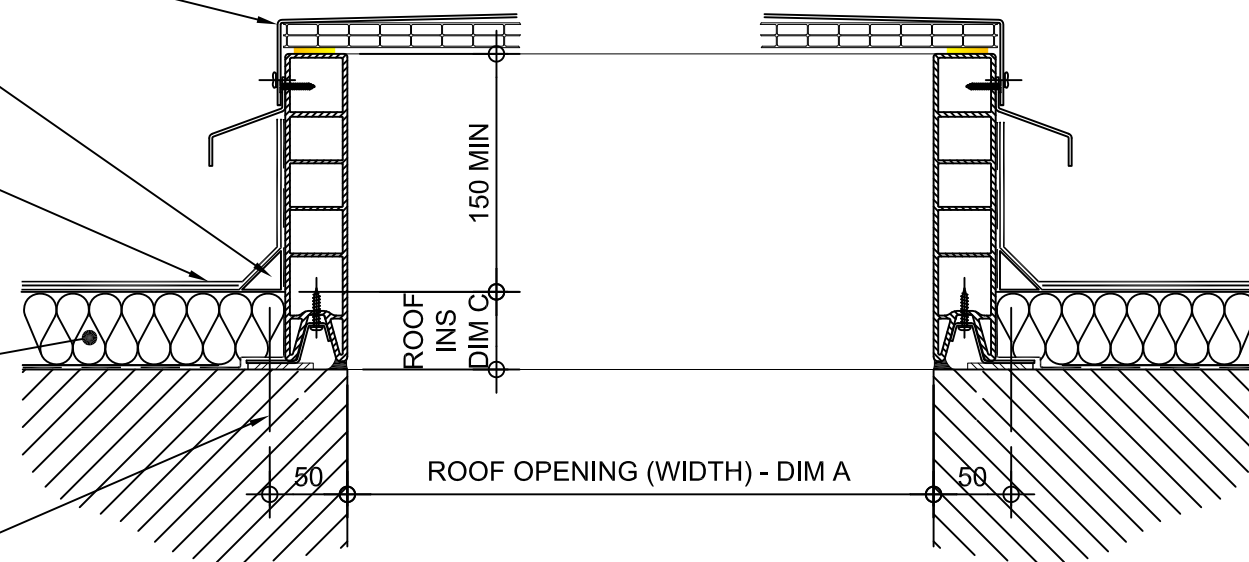
INSULATED
 ALUMINIUM LID POP
 RIVETED TO X2V KERB

FILLET BY OTHERS

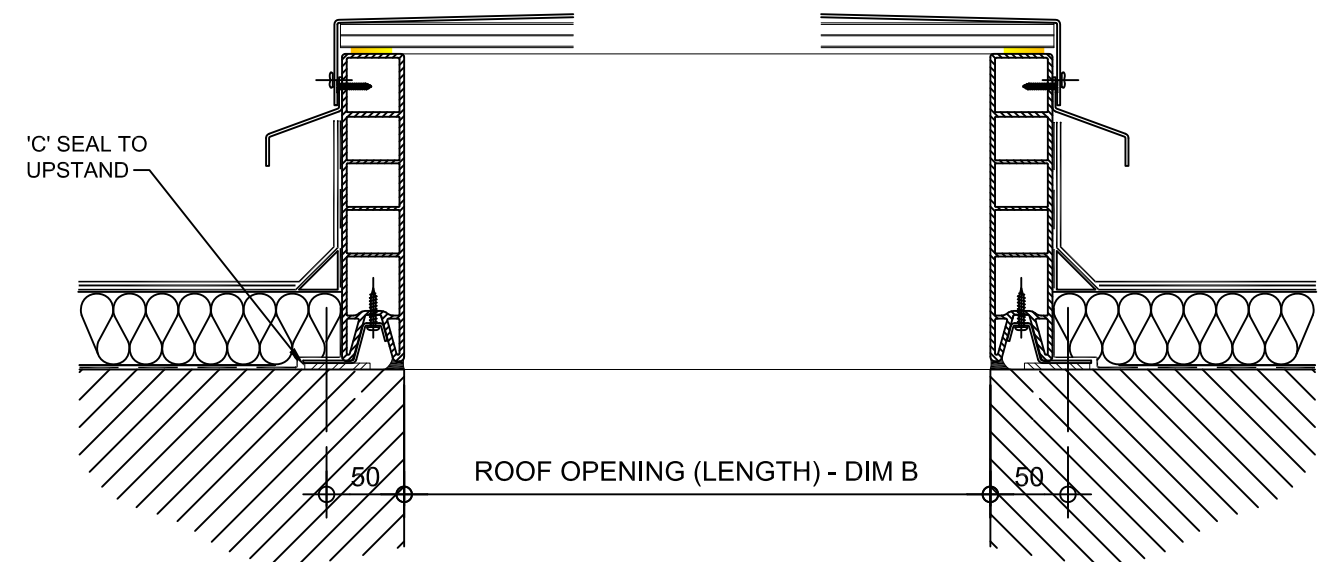
ROOF FINISHES
 BY OTHERS

ROOF INSULATION
 BY OTHERS


FIXING POINT (FIXINGS
 DEPENDANT OF UPSTAND
 SUBSTRATE, TO BE DETERMINED
 BY CONTRACTOR)



SECTION A - A



SECTION B - B

REV:	DATE:	DESCRIPTION:	DRN BY	DESCRIPTION:					
1	29.11.13	Updated to show single stack	IW	uPVC X2V kerb, direct to roof, Unventilated with insulated solid lid.					
0	06.12.12	New modular drawings released	IW						
				DRAWN BY:	CREATION DATE:	CHECKED BY:	SCALE(S)	REVISION:	
				IW	29-Nov-13	DL	1:5 @ A3	1	
				Xtralite (Rooflights) Limited Spencer Road, Blyth Industrial Estate, Blyth, Northumberland, NE24 5TG T:01670 354 157 F:01670 364 875 E:sales@xtralite.co.uk W:www.xtralite.co.uk				DRG No. XT-X2V-C-00-ISL	