

PLAN ON MODULAR ROOFLIGHT

Kerb Specification:
 X2V kerb constructed from self finish white uPVC

Typical Glazing Specification:
 Outer - 6mm thick clear toughened glass
 Core - 16mm thick air filled cavity
 Inner - 6.4mm thick clear laminated low 'E' glass

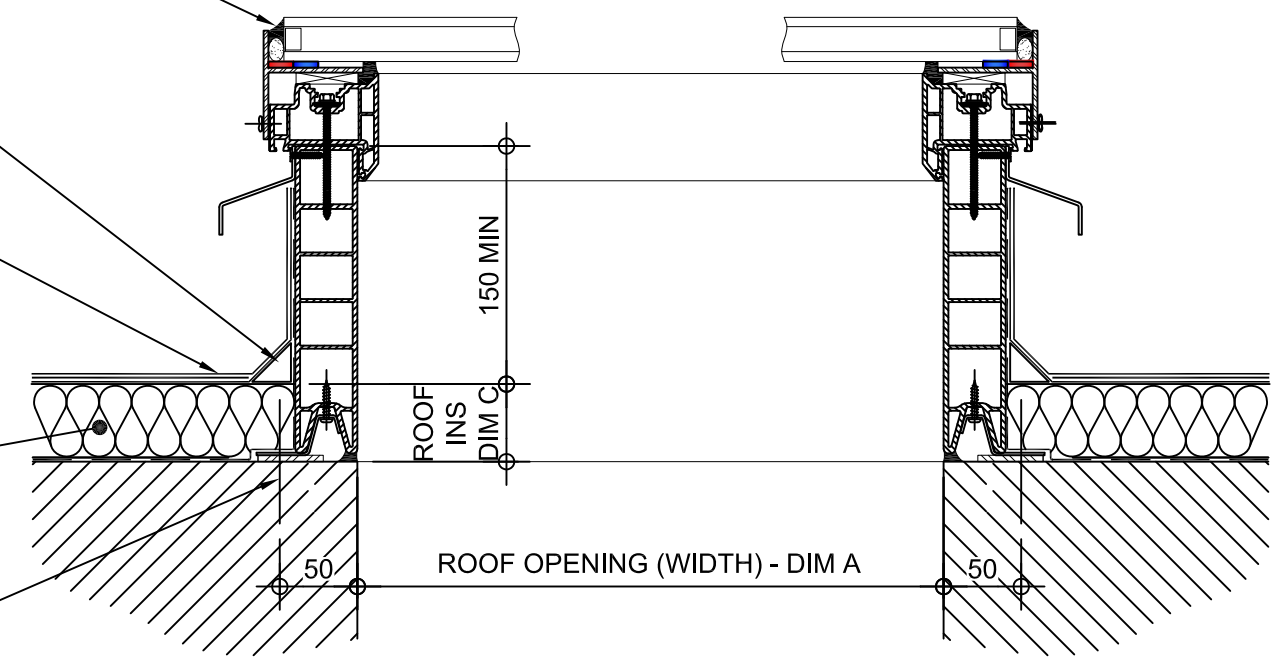
GLASS FULLY SILICONE SEALED INTO 'T' FRAME

FILLET BY OTHERS

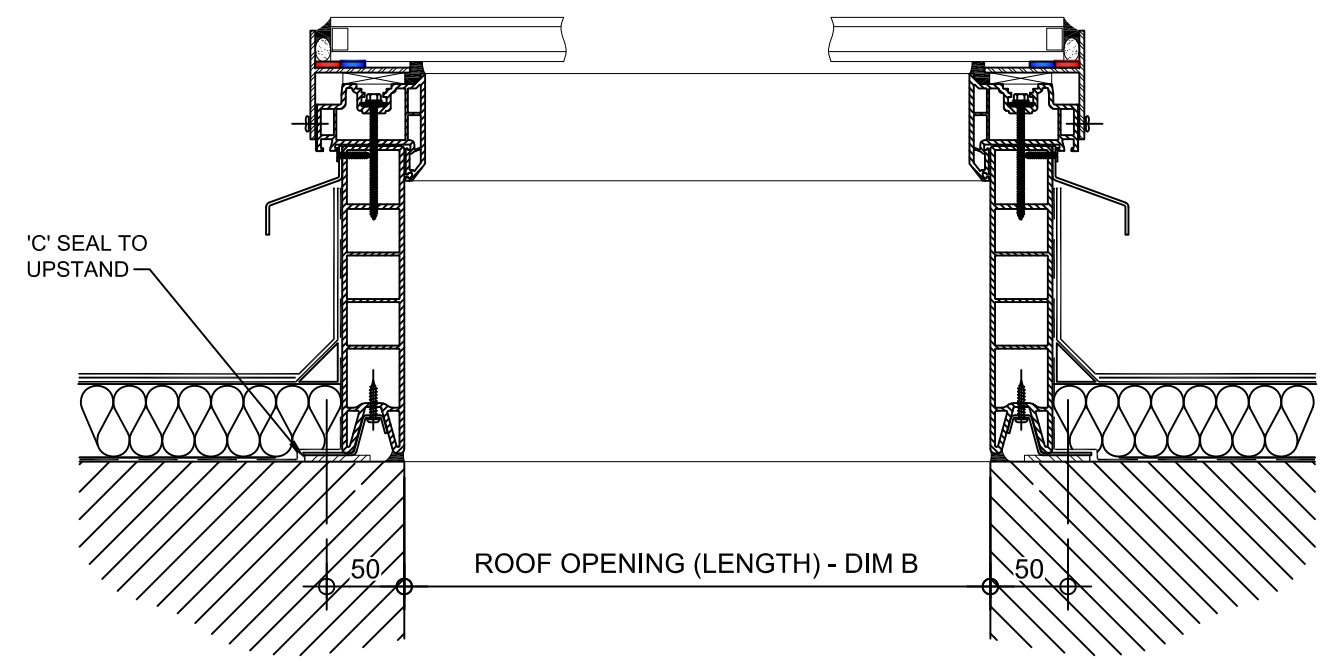
ROOF FINISHES BY OTHERS

ROOF INSULATION BY OTHERS


FIXING POINT (FIXINGS DEPENDANT OF UPSTAND SUBSTRATE, TO BE DETERMINED BY CONTRACTOR)



SECTION A - A



SECTION B - B

REV:	DATE:	DESCRIPTION:	DRN BY	DESCRIPTION:				
1	29.11.13	Updated to show single stack	IW	uPVC X2V kerb direct to roof, Unventilated with double glazed flat glass top.				
0	06.12.12	New modular drawings released	IW					
DRAWN BY:		CREATION DATE:	CHECKED BY:	SCALE(S)	REVISION:			
IW		29-Nov-13	DL	1:5 @ A3	1			
Xtralite (Rooflights) Limited Spencer Road, Blyth Industrial Estate, Blyth, Northumberland, NE24 5TG T:01670 354 157 F:01670 364 875 E:sales@xtralite.co.uk W:www.xtralite.co.uk								 DRG No. XT-X2V-C-00-IGLF