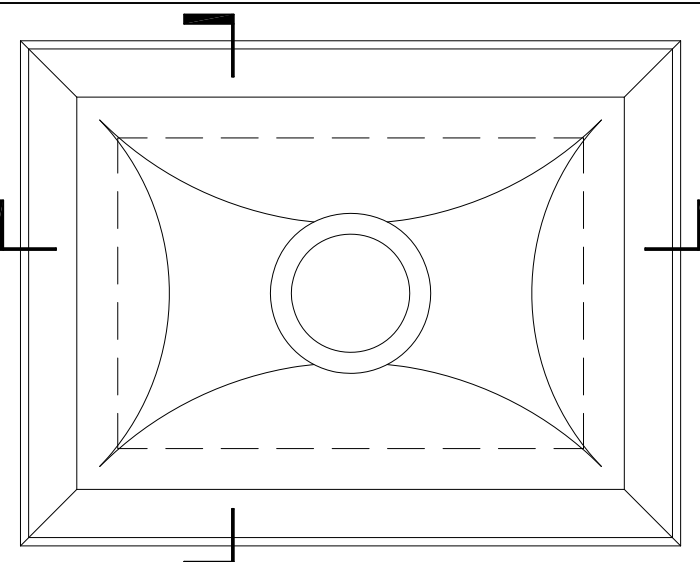


Kerb Specification:
 X2V kerb constructed from self
 finish white uPVC

Typical Glazing Specification:
 Outer - 3mm thick clear UV protected
 polycarbonate
 Mid - 2mm thick diffused polycarbonate
 Inner - 2mm thick clear polycarbonate

B - B



A - A

**PLAN ON MODULAR
 ROOFLIGHT**

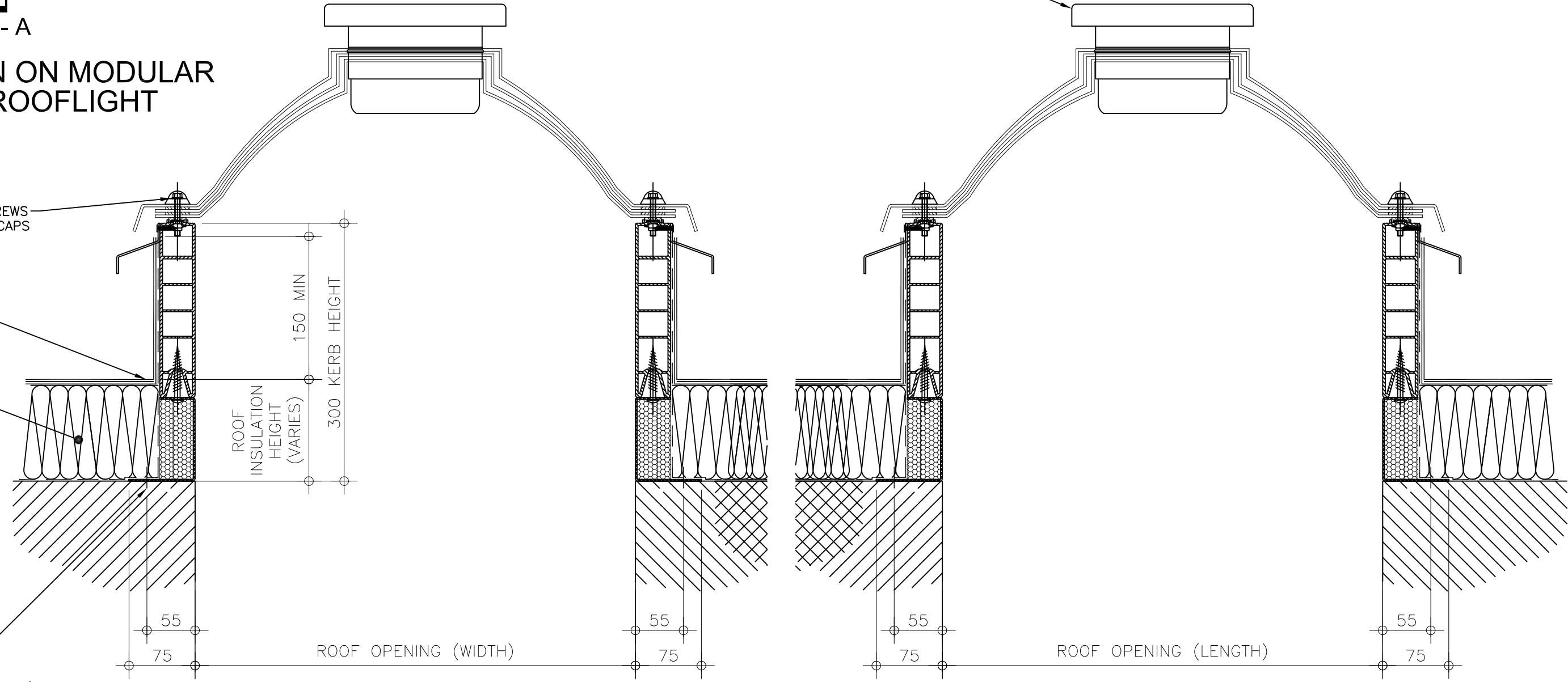
6" VORTICE FAN UNIT
 ALL WIRING, CONTROL
 PANELS, COMMISSIONING
 BY OTHERS NOT XTRALITE

STANDARD SECURITY SCREWS
 COMPLETE WITH COVER CAPS

ROOF FINISHES DRESSED
 UP EXTERNAL FACE OF
 X2V KERB BY OTHERS

ROOF INSULATION
 BY OTHERS

FIXING POINT (FIXINGS
 DEPENDANT OF UPSTAND
 SUBSTRATE, TO BE
 DETERMINED BY CONTRACTOR)



SECTION A - A

SECTION B - B

REV:	DATE:	DESCRIPTION:	DRN BY	DESCRIPTION:				
0	31.01.14	Issued for information	DL	uPVC X2V upstand with insulated metal foot, complete with 6" vortice fan unit, triple skin polycarbonate dome and standard security screws.				
				DRAWN BY:	CREATION DATE:	CHECKED BY:	SCALE(S)	REVISION:
				DL	31-Jan-14	IW	1:5 @ A3	0
					Xtralite (Rooflights) Limited Spencer Road, Blyth Industrial Estate, Blyth, Northumberland, NE24 5TG T:01670 354 157 F:01670 364 875 E:sales@xtralite.co.uk W:www.xtralite.co.uk			
					 Xtralite ROOFLIGHTS			
					DRG No. XT-X2V-B-13-SS			