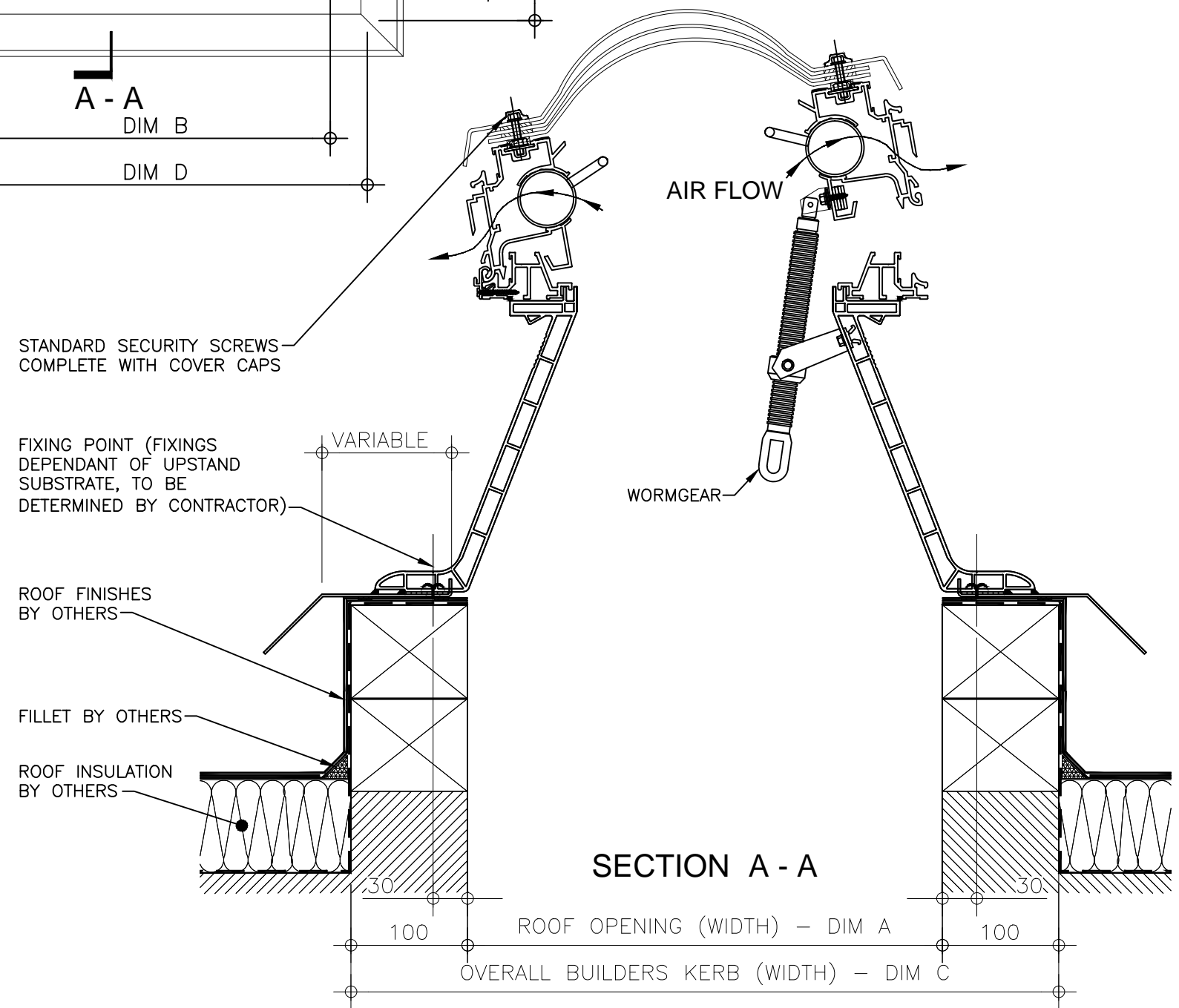


### PLAN ON MODULAR ROOFLIGHT

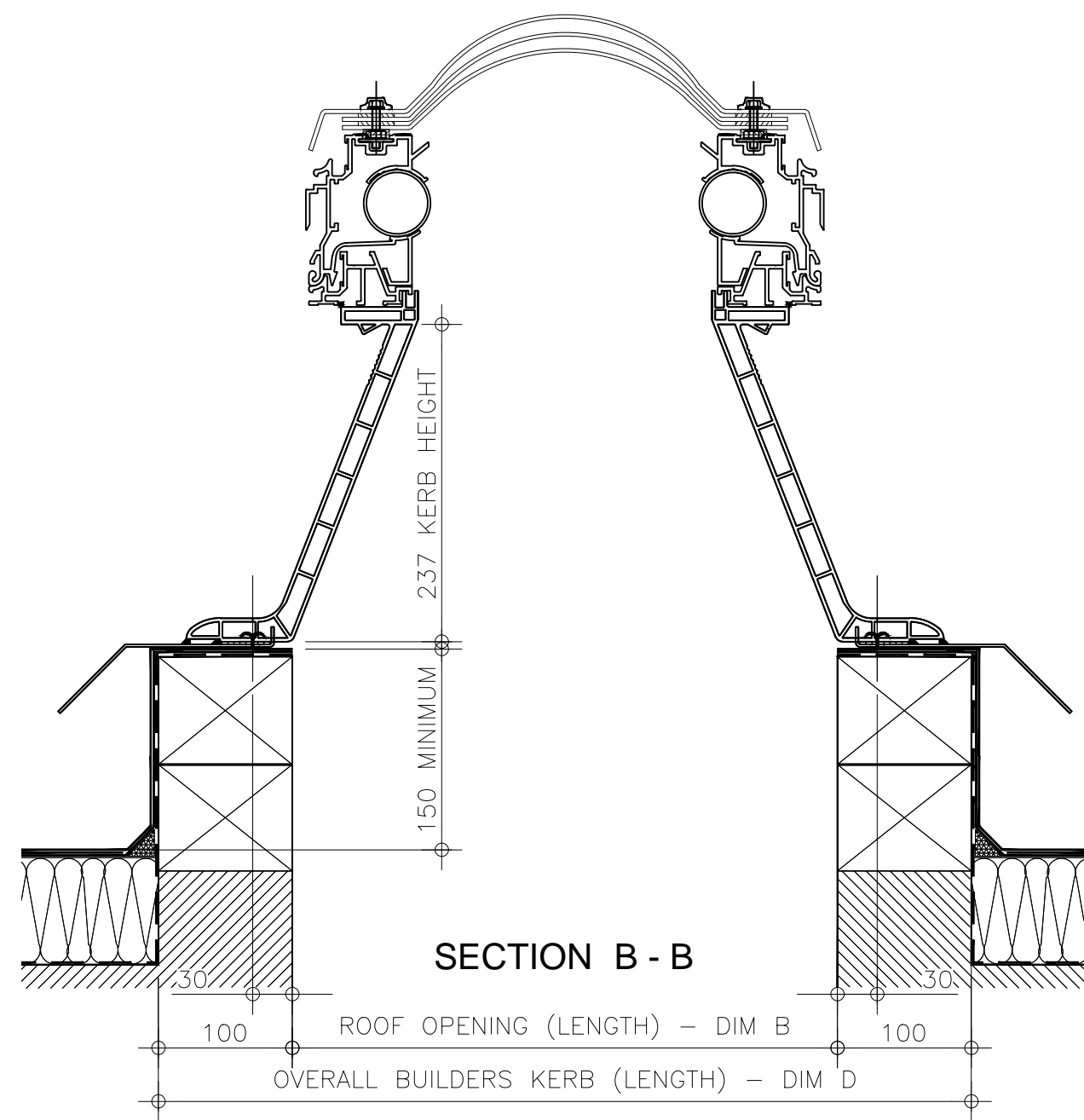
**Kerb Specification:**  
 X2 kerb constructed from self finish white uPVC

**Typical Glazing Specification:**  
 Outer - 3mm thick clear UV protected polycarbonate  
 Mid - 2mm thick clear polycarbonate  
 Inner - 3mm thick clear polycarbonate



**SECTION A - A**

ROOF OPENING (WIDTH) - DIM A  
 OVERALL BUILDERS KERB (WIDTH) - DIM C



**SECTION B - B**

ROOF OPENING (LENGTH) - DIM B  
 OVERALL BUILDERS KERB (LENGTH) - DIM D

REV: 0	DATE: 19.12.13	DESCRIPTION: New modular drawings released	DRN BY IW	DESCRIPTION: uPVC upstand fixed direct to roof complete with rotary ventilation and wormgear operated triple skin polycarbonate dome and standard security screws.					 DRG No. XT-X2-C-0302-SS
				DRAWN BY: IW	CREATION DATE: 19-Dec-13	CHECKED BY: ----	SCALE(S) 1:5 @ A3	REVISION: 0	
				Xtralite (Rooflights) Limited Spencer Road, Blyth Industrial Estate, Blyth, Northumberland, NE24 5TG T:01670 354 157 F:01670 364 875 E:sales@xtralite.co.uk W:www.xtralite.co.uk					