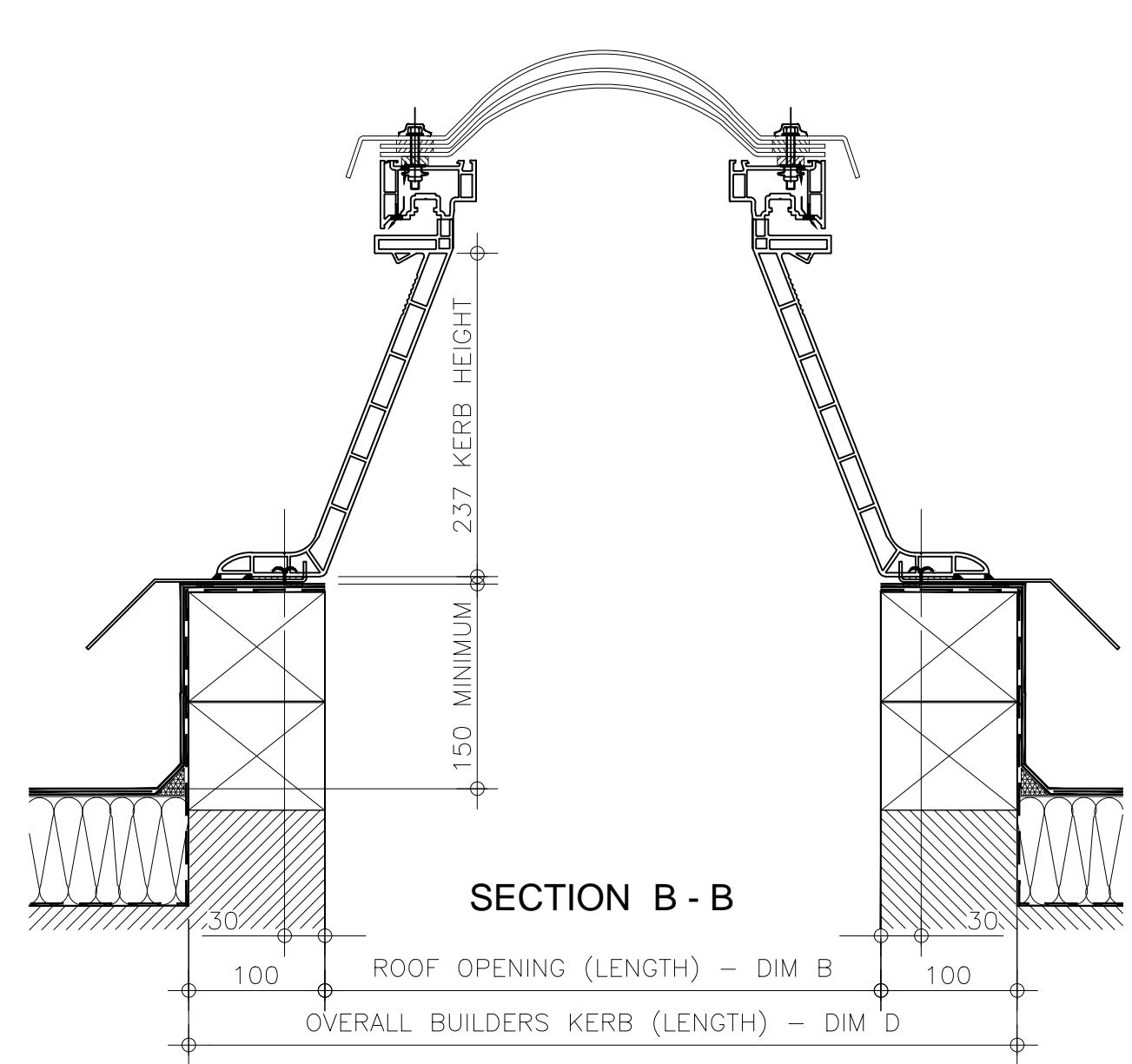
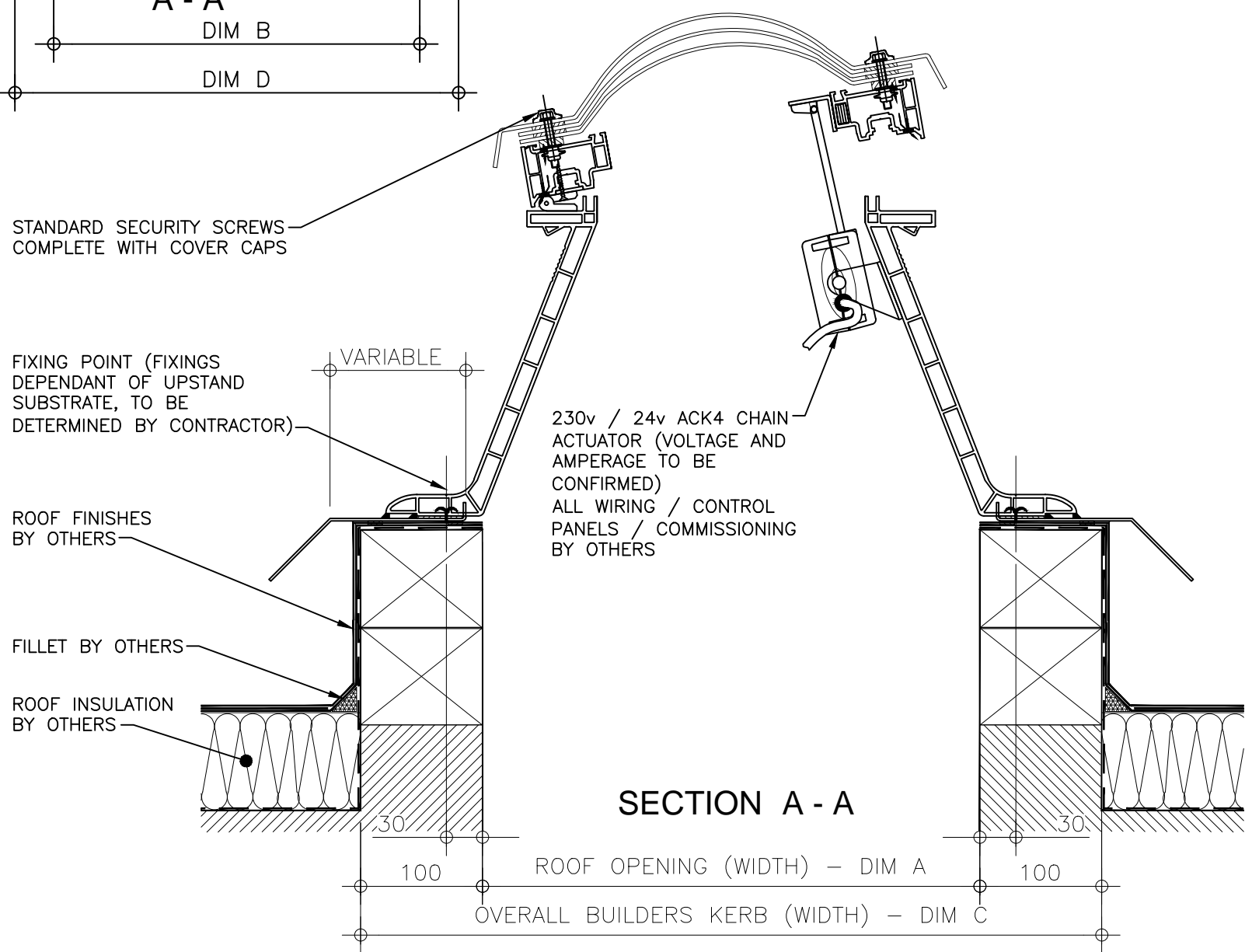


**PLAN ON MODULAR ROOFLIGHT**

Kerb Specification:  
 X2 kerb extruded from self finish uPVC (white in colour)

Typical Glazing Specification:  
 Outer - 3mm thick clear UV protected polycarbonate  
 Mid - 2mm thick clear polycarbonate  
 Inner - 3mm thick clear polycarbonate



REV:	DATE:	DESCRIPTION:	DRN BY	DESCRIPTION:
0	19.12.13	New modular drawings released	IW	uPVC upstand with adaptor base kerb complete with electrically operated vent and triple skin polycarbonate dome with standard security screws.
		DRAWN BY:	CREATION DATE:	CHECKED BY:
		IW	19-Dec-13	----
		SCALE(S)		REVISION:
		1:5 @ A3		0
				<b>Xtralite (Rooflights) Limited</b>
				Spencer Road, Blyth Industrial Estate, Blyth, Northumberland, NE24 5TG
				T:01670 354 157 F:01670 364 875 E:sales@xtralite.co.uk W:www.xtralite.co.uk

**Xtralite**  
**ROOFLIGHTS**

DRG No.  
 XT-X2-C-06-SS