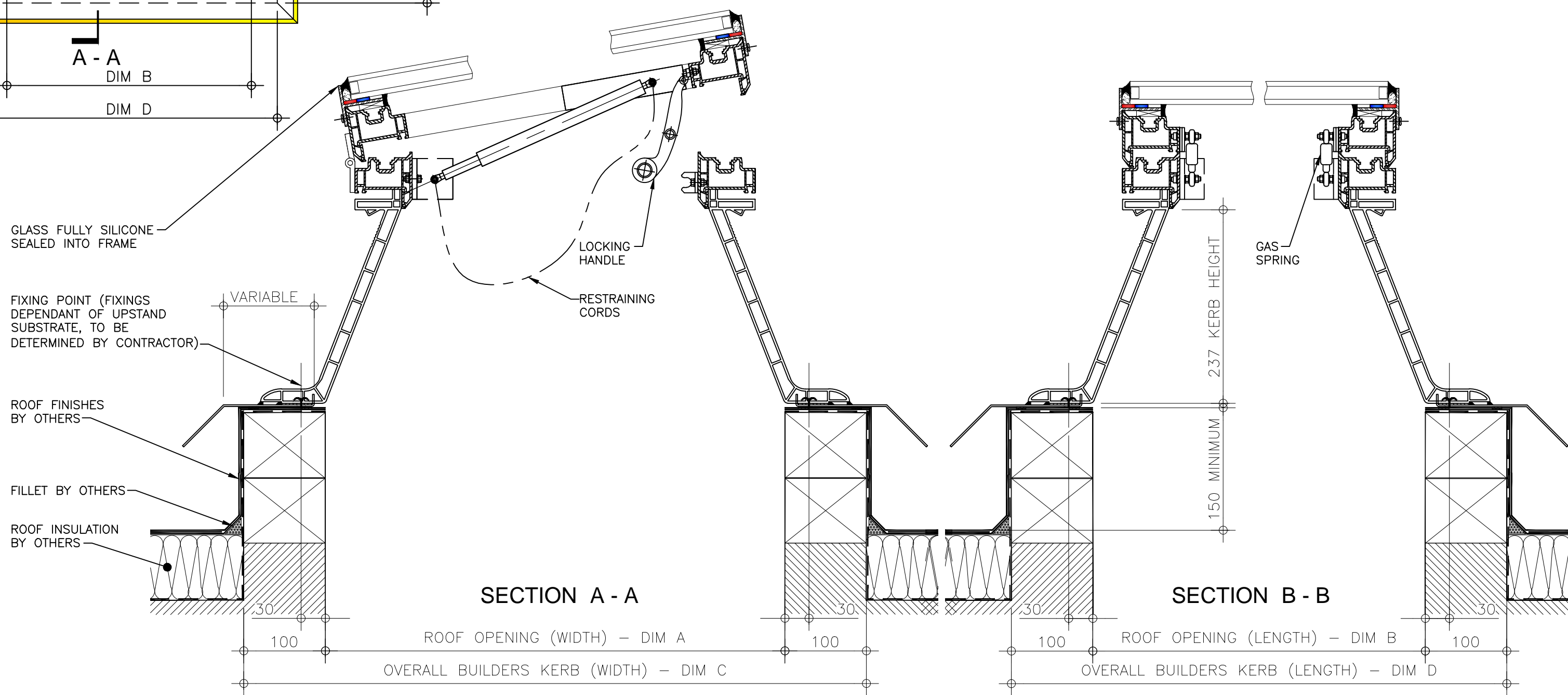


PLAN ON MODULAR ROOFLIGHT

Kerb Specification:
 X2 kerb constructed from self finish white uPVC

Typical Glazing Specification:
 Outer - 6mm thick clear toughened glass
 Core - 16mm thick air filled cavity
 Inner - 6.4mm thick clear laminated low 'E' glass



SECTION A - A

SECTION B - B

REV:	DATE:	DESCRIPTION:	DRN BY	DESCRIPTION:					 DRG No. XT-X2-C-04G-IGLF
0	19.12.13	New modular drawings released	IW	uPVC access hatch upstand with adaptor base kerb, gas spring operated complete with restraining cords and double glazed flat glass top.					
				DRAWN BY:	CREATION DATE:	CHECKED BY:	SCALE(S)	REVISION:	
				IW	19-Dec-13	----	1:5 @ A3	0	
				Xtralite (Rooflights) Limited Spencer Road, Blyth Industrial Estate, Blyth, Northumberland, NE24 5TG T:01670 354 157 F:01670 364 875 E:sales@xtralite.co.uk W:www.xtralite.co.uk					