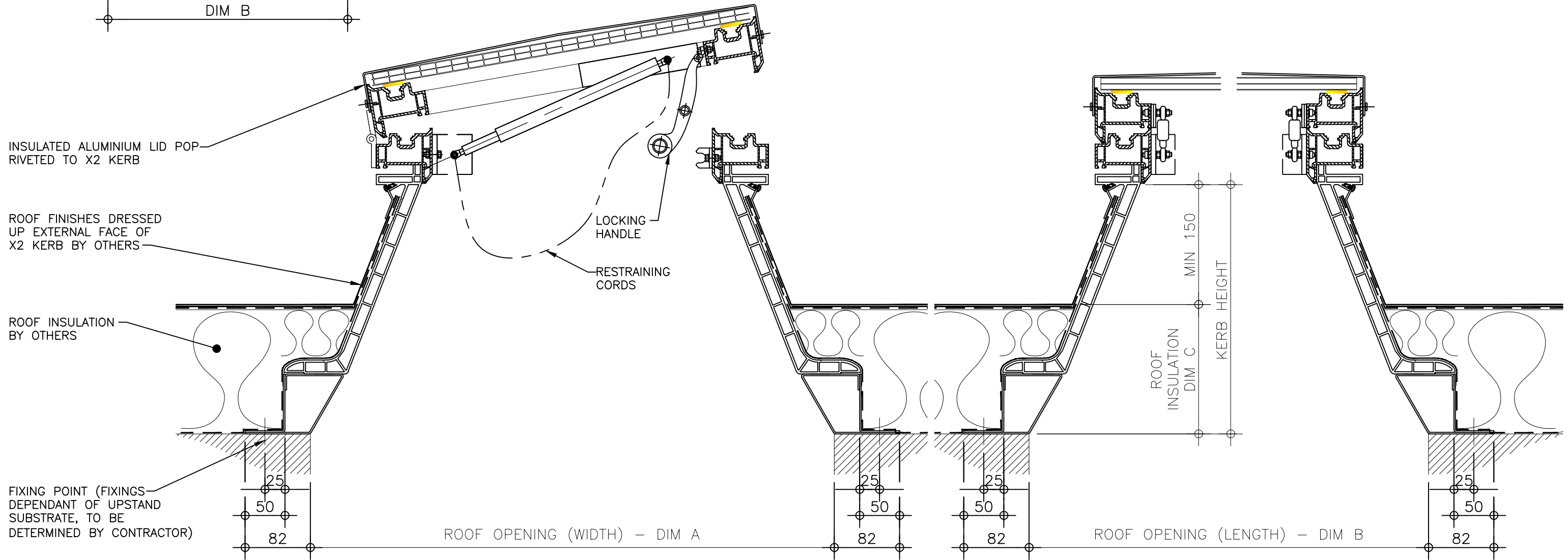
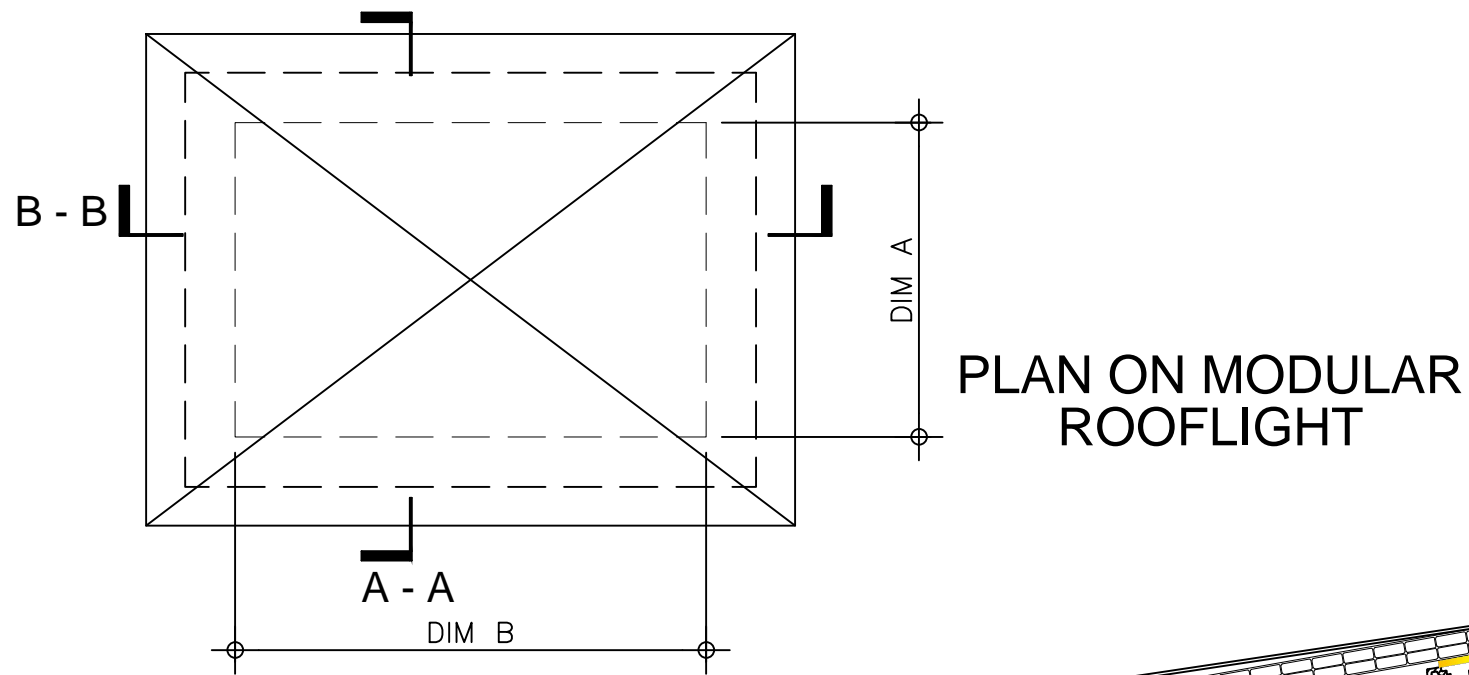


Kerb Specification:  
 X2 kerb constructed from self finish white uPVC

Typical Glazing Specification:  
 2mm thick polyester powder coated aluminium with 16mm structured polycarbonate internal liner



**SECTION A - A**

**SECTION B - B**

REV:	DATE:	DESCRIPTION:	DRN BY:	DESCRIPTION:				
0	23.12.13	New modular drawings released	IW	uPVC access hatch upstand with flexible base kerb, fixed direct to roof, gas spring operated complete with restraining cords and insulated solid lid (aluminium).				
				DRAWN BY:	CREATION DATE:	CHECKED BY:	SCALE(S)	
				IW	23-Dec-13	DL	1:5 @ A3	0
				<b>Xtralite (Rooflights) Limited</b> Spencer Road, Blyth Industrial Estate, Blyth, Northumberland, NE24 5TG T:01670 354 157 F:01670 364 875 E:sales@xtralite.co.uk W:www.xtralite.co.uk				DRG No. <b>XT-X1-A-04G-ISL</b>